

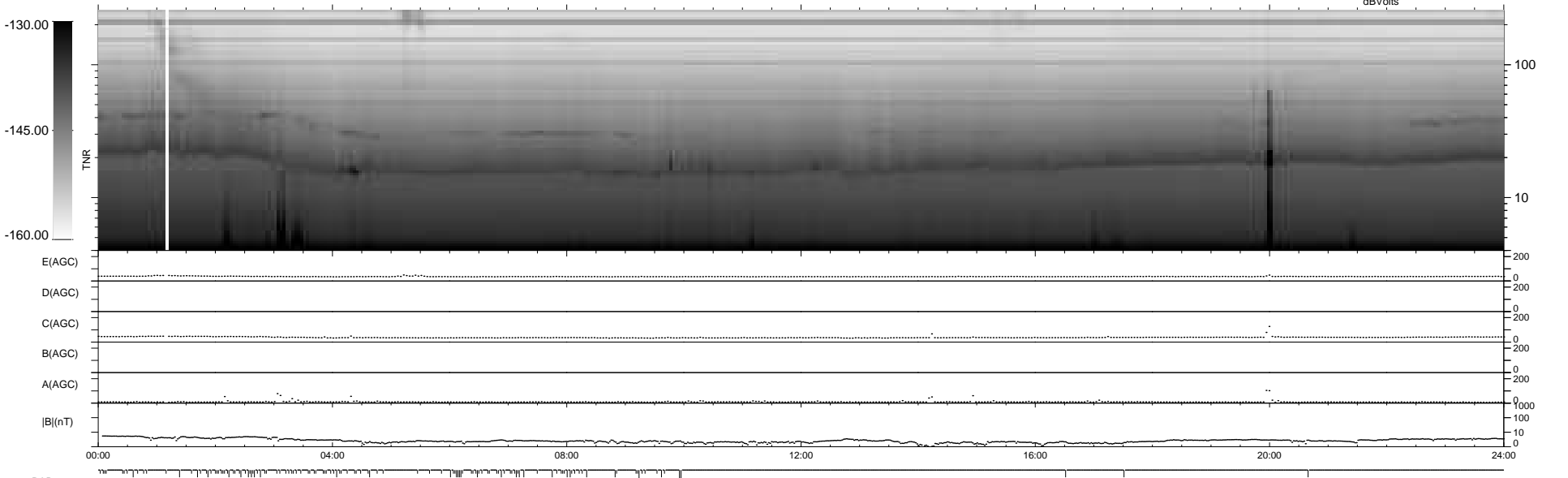
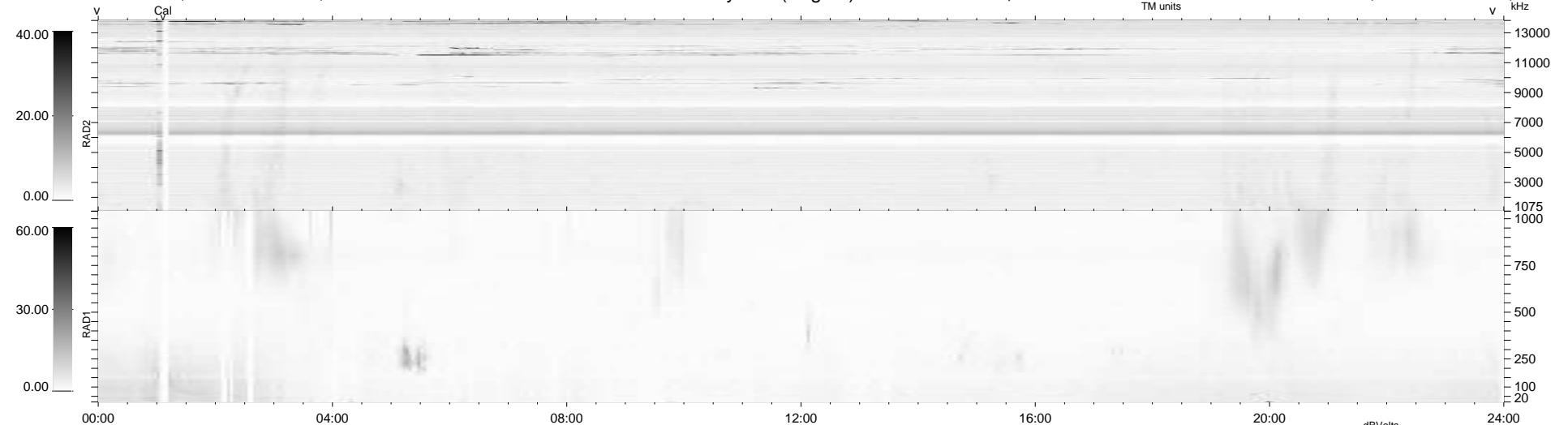
127 bad + 812 good MF/939MF projected (86%) - 0 missing MFs
 Avg interval = 180 secs
 Re = 220.95 (204.68, -83.03, -5.48 GSE)

windlib 2.0b

LZ version = v02

WIND/WAVES Summary Plot (Page 1) for 08-APR-2021, DOY = 98

DAILY 2021-04-10 23:20:05
 Re = 219.70 (204.26, -80.70, -5.85 GSE)



E(AGC)
 D(AGC)
 C(AGC)
 B(AGC)
 A(AGC)
 |B|(nT)
 00:00 04:00 08:00 12:00 16:00 20:00 24:00

RAD2
 Antenna Ey
 Mode LIN(1)
 SUM/SEP SEP
 Toggle OFF
RAD1
 Antenna Ex
 Mode LIS(2,4)
 SUM/SEP SUM
 Toggle OFF
TNR
 Antenna ExEy
 Mode A-32
 Sweep ACE