

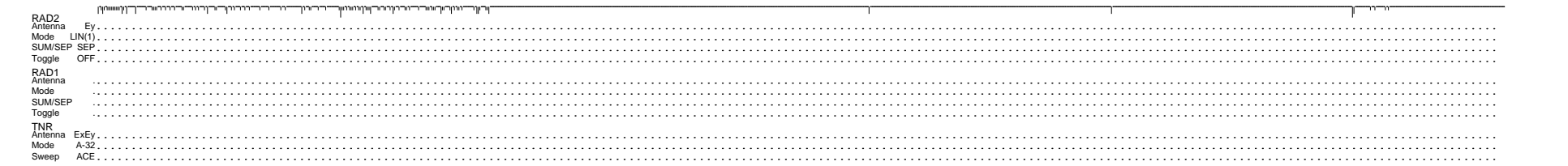
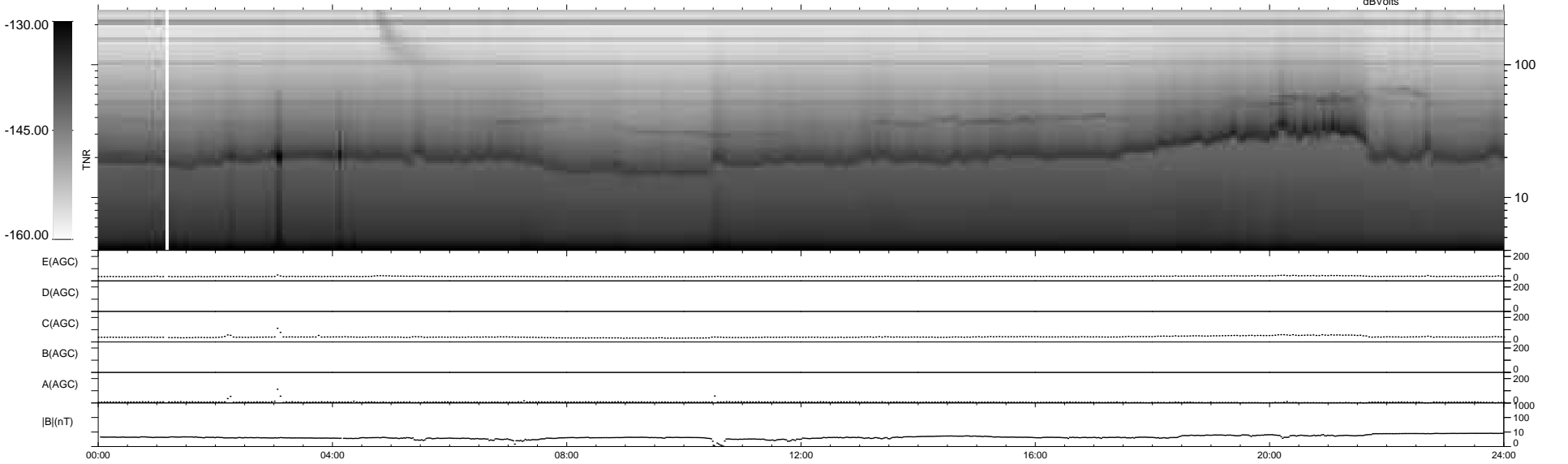
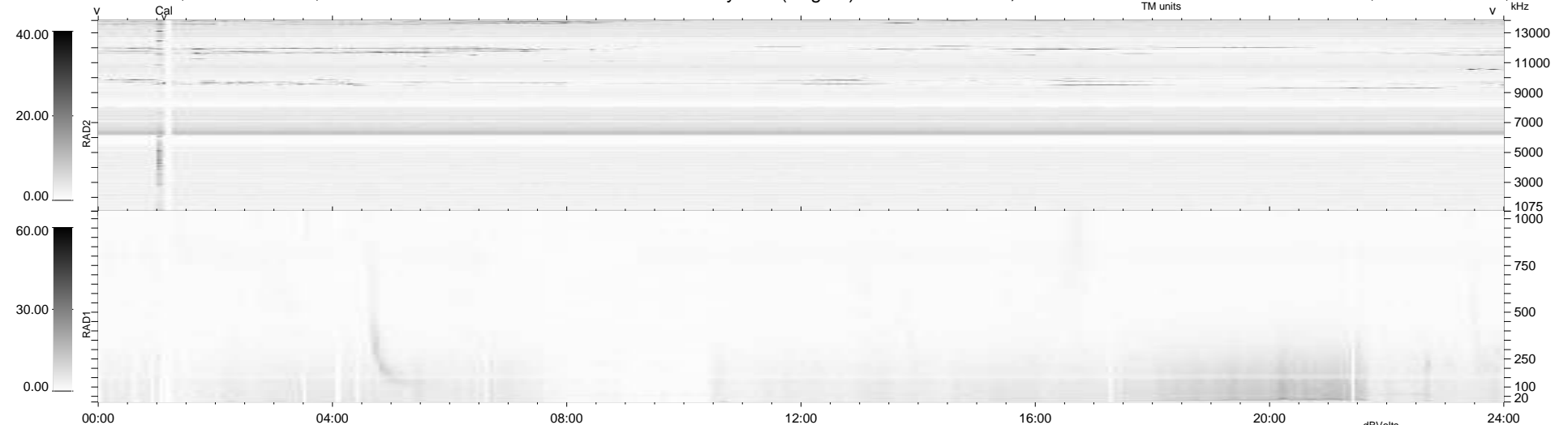
110 bad + 830 good MF/940MF projected (88%) - 0 missing MFs
Avg interval = 180 secs
Re = 251.43 (232.03, -96.65, 5.93 GSE)

windlib 2.0b

LZ version = v01

WIND/WAVES Summary Plot (Page 1) for 11-MAR-2021, DOY = 70

DAILY 2021-03-13 23:20:14
Re = 250.75 (230.88, -97.67, 5.55 GSE)



RAD2 Antenna Ey
Mode LIN(1)
SUM/SEP SEP
Toggle OFF
RAD1 Antenna
Mode
SUM/SEP
Toggle
TNR Antenna ExEy
Mode A-32
Sweep ACE