

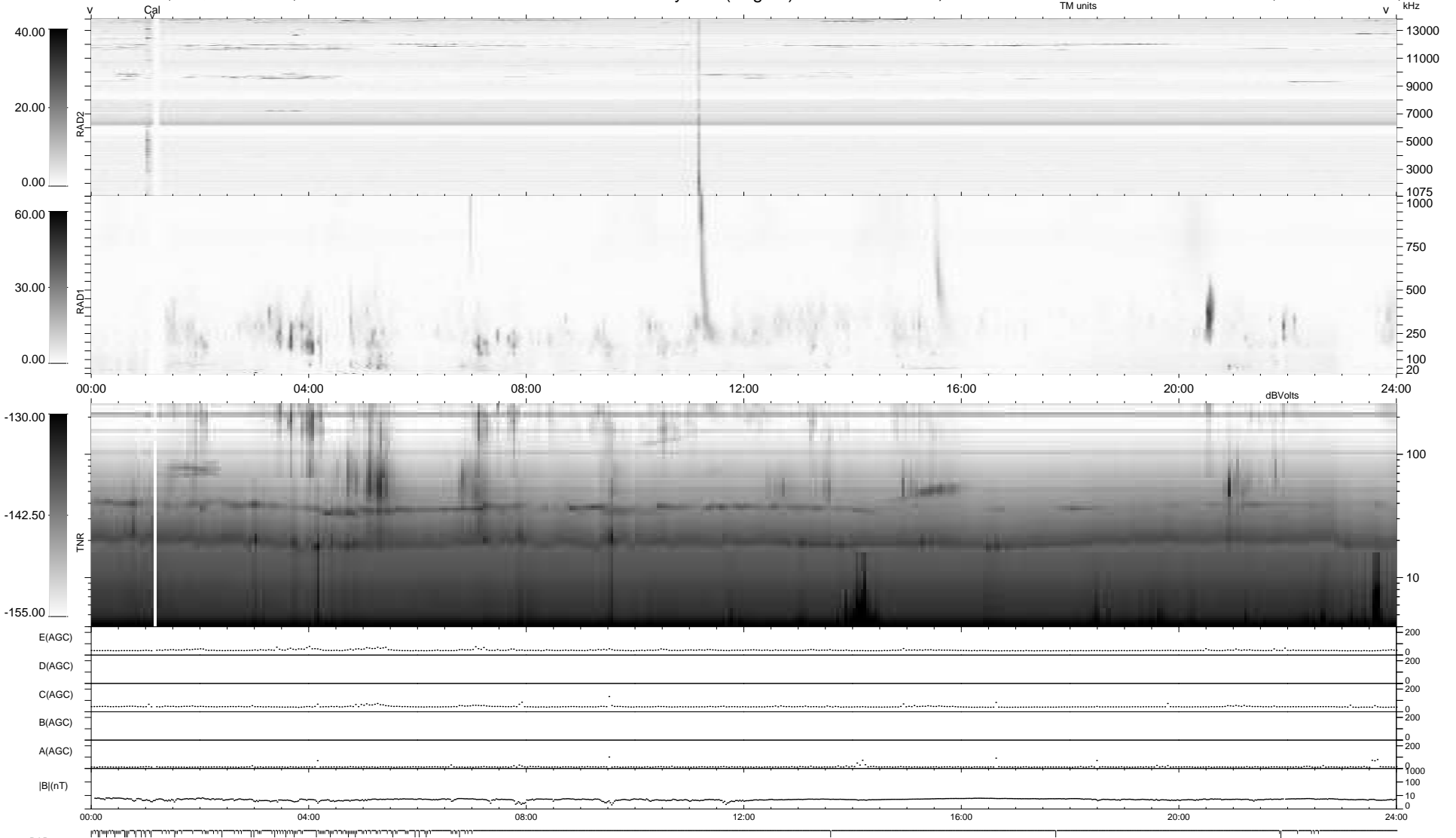
124 bad + 816 good MF/940MF projected (86%) - 0 missing MFs
 Avg interval = 180 secs
 Re = 254.70 (240.47, -83.48, 8.79 GSE)

windlib 2.0b

LZ version = v01

WIND/WAVES Summary Plot (Page 1) for 03-MAR-2021, DOY = 62

DAILY 2021-03-04 22:20:05
 Re = 254.44 (239.46, -85.60, 8.47 GSE)



```

RAD2
Antenna  Ey .....
Mode     LIN(1) .....
SUM/SEP  SEP .....
Toggle   OFF .....

RAD1
Antenna  Ex .....
Mode     LIS(2,4) .....
SUM/SEP  SUM .....
Toggle   OFF .....

TNR
Antenna  ExEy .....
Mode     A-32 .....
Sweep    ACE .....
  
```