

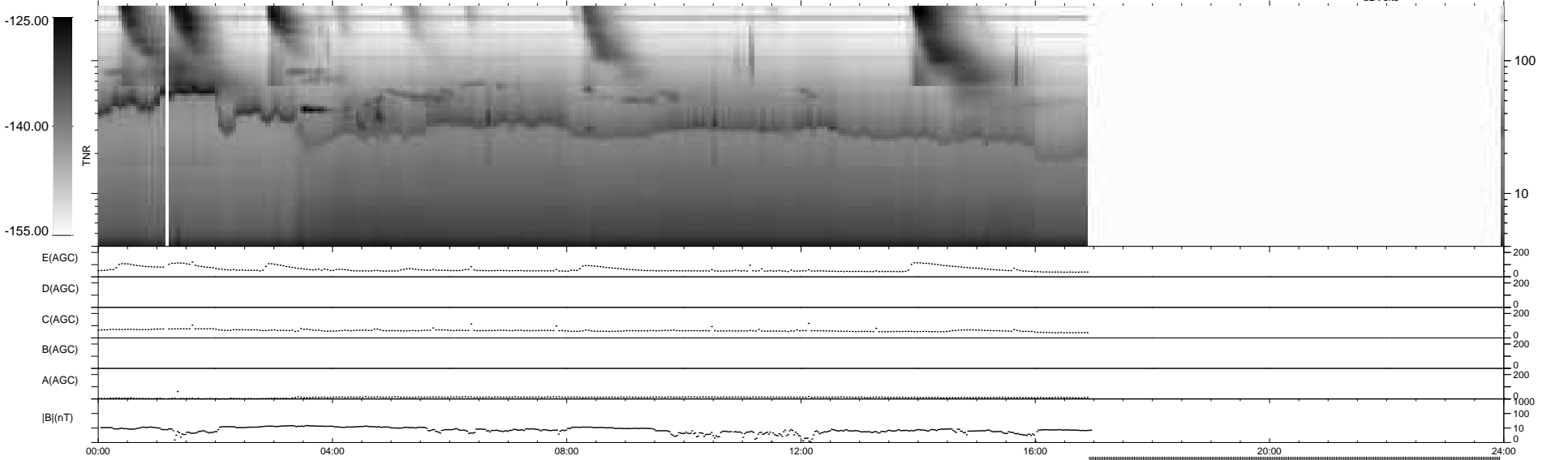
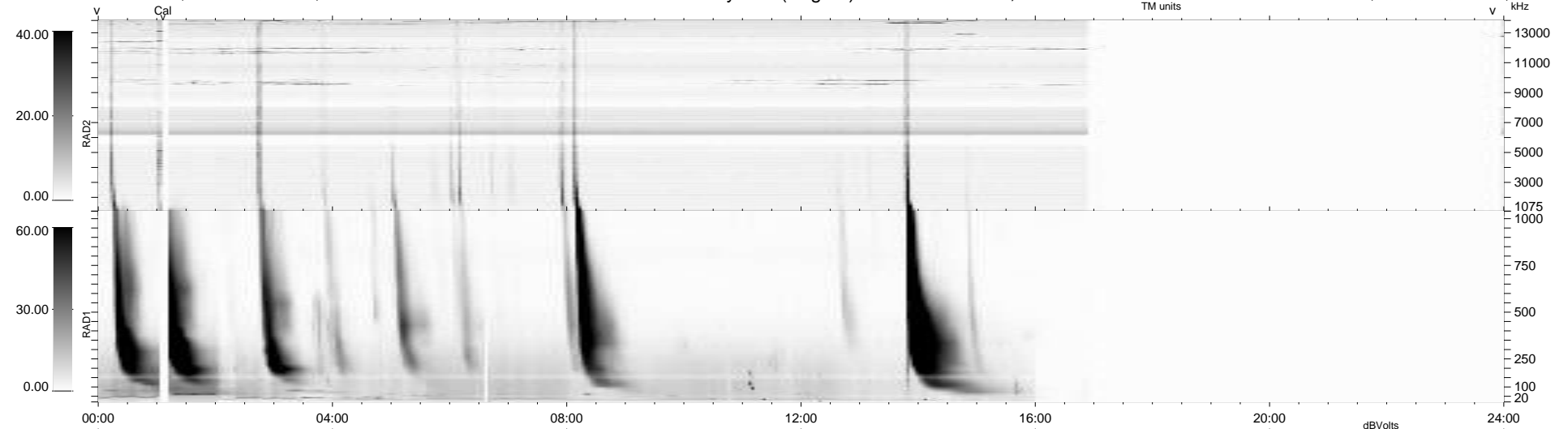
6 bad + 658 good MF/939MF projected (70%) - 275 missing MFs
 Avg interval = 180 secs
 Re = -255.19 (242.52, -78.82, 9.42 GSE)

windlib 2.0b

LZ version = v01

WIND/WAVES Summary Plot (Page 1) for 01-MAR-2021, DOY = 60

DAILY 2021-03-02 17:20:04
 Re = 254.95 (241.50, -81.19, 9.11 GSE)



```

RAD2
Antenna Ey .....
Mode LIN(1) .....
SUM/SEP SEP .....
Toggle OFF .....

RAD1
Antenna Ex .....
Mode LIS(2,4) .....
SUM/SEP SUM .....
Toggle OFF .....

TNR
Antenna ExEy .....
Mode A-32 .....
Sweep ACE .....
  
```