

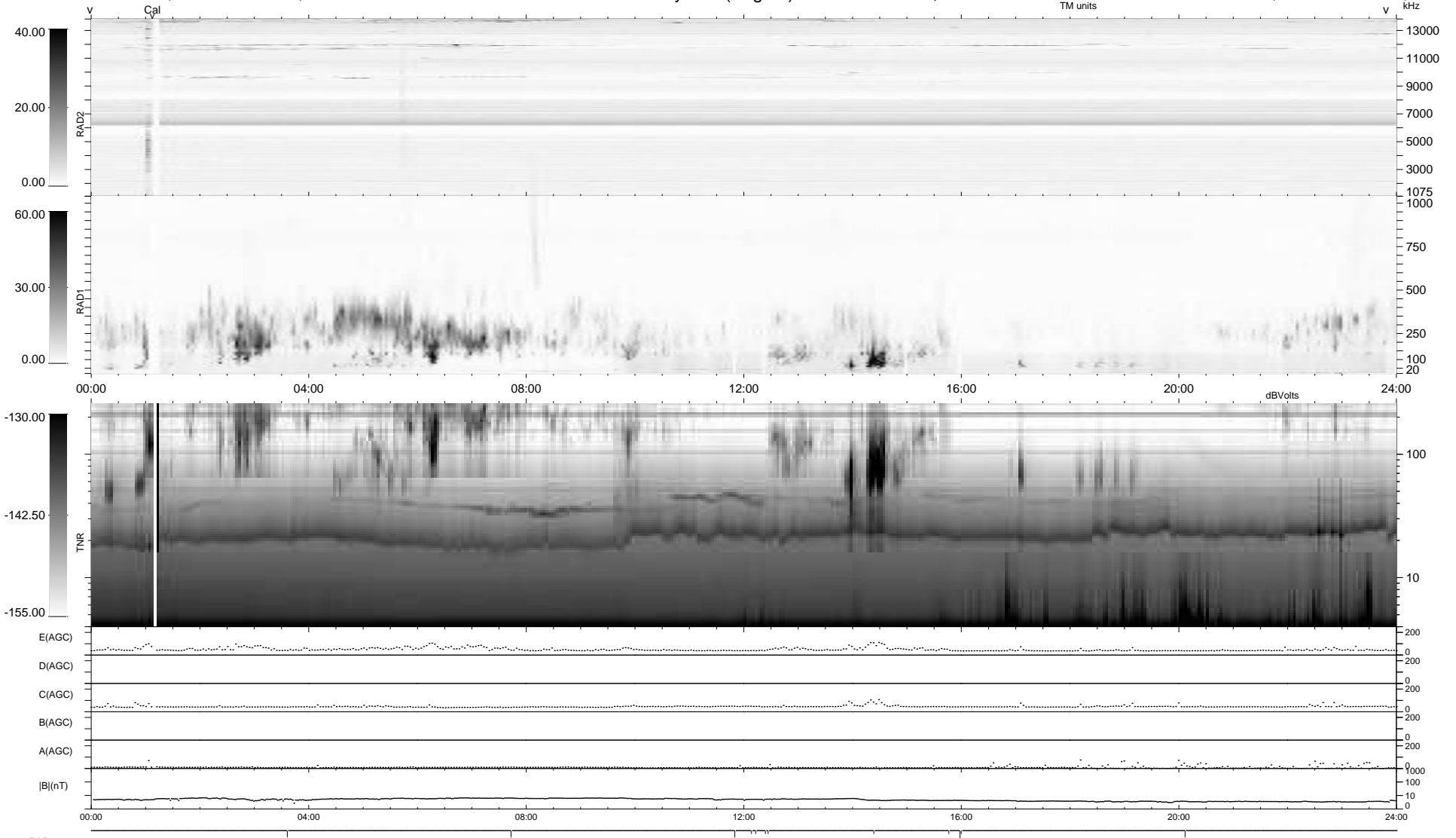
12 bad + 928 good MF/940MF projected (98%) - 0 missing MFs
 Avg interval = 180 secs
 Re = 256.80 (248.81, -62.59, 10.98 GSE)

windlib 2.0b

LZ version = v01

WIND/WAVES Summary Plot (Page 1) for 23-FEB-2021, DOY = 54

DAILY 2021-02-24 18:20:14
 Re = 256.50 (247.78, -65.45, 10.75 GSE)



```

RAD2
Antenna Ey .....
Mode LIN(1) .....
SUM/SEP SEP .....
Toggle OFF .....

RAD1
Antenna Ex .....
Mode LIS(2,4) .....
SUM/SEP SUM .....
Toggle OFF .....

TNR
Antenna ExEy .....
Mode A-32 .....
Sweep ACE .....
  
```