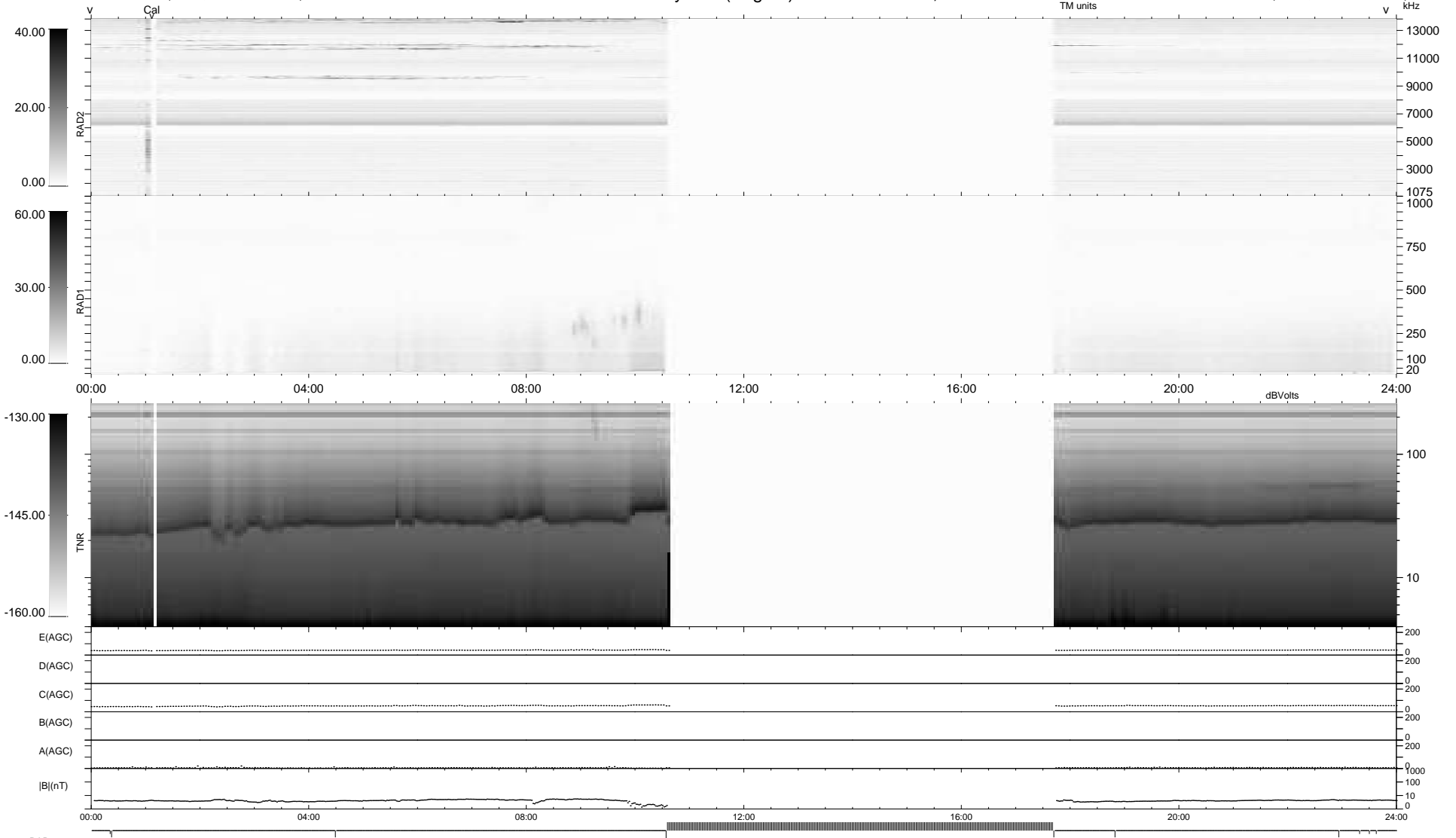


10 bad + 651 good MF/939MF projected (69%) - 278 missing MFs
 Avg interval = 180 secs
 Re = 259.37 (257.84, -24.99, 12.86 GSE)

windlib 2.0b LZ version = v01
 DAILY 2021-02-12 18:20:04
 Re = 259.33 (257.47, -28.28, 12.75 GSE)

WIND/WAVES Summary Plot (Page 1) for 11-FEB-2021, DOY = 42



```

RAD2
Antenna Ey .....
Mode LIN(1) .....
SUM/SEP SEP .....
Toggle OFF .....

RAD1
Antenna Ex .....
Mode LIS(2,4) .....
SUM/SEP SUM .....
Toggle OFF .....

TNR
Antenna ExEy .....
Mode A-32 .....
Sweep ACE .....
  
```