

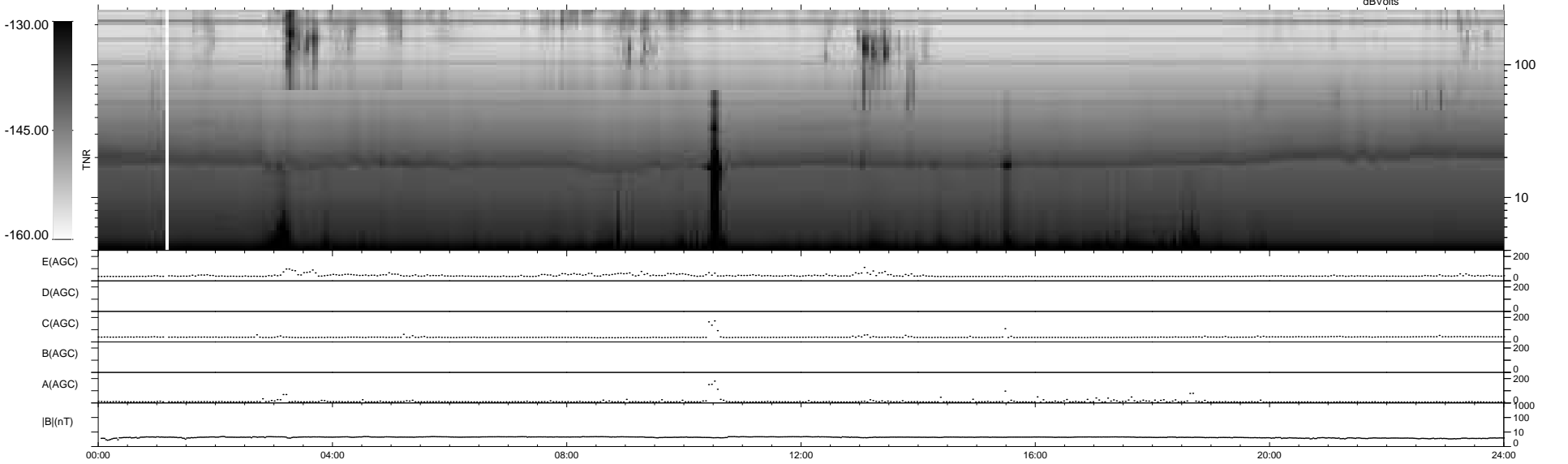
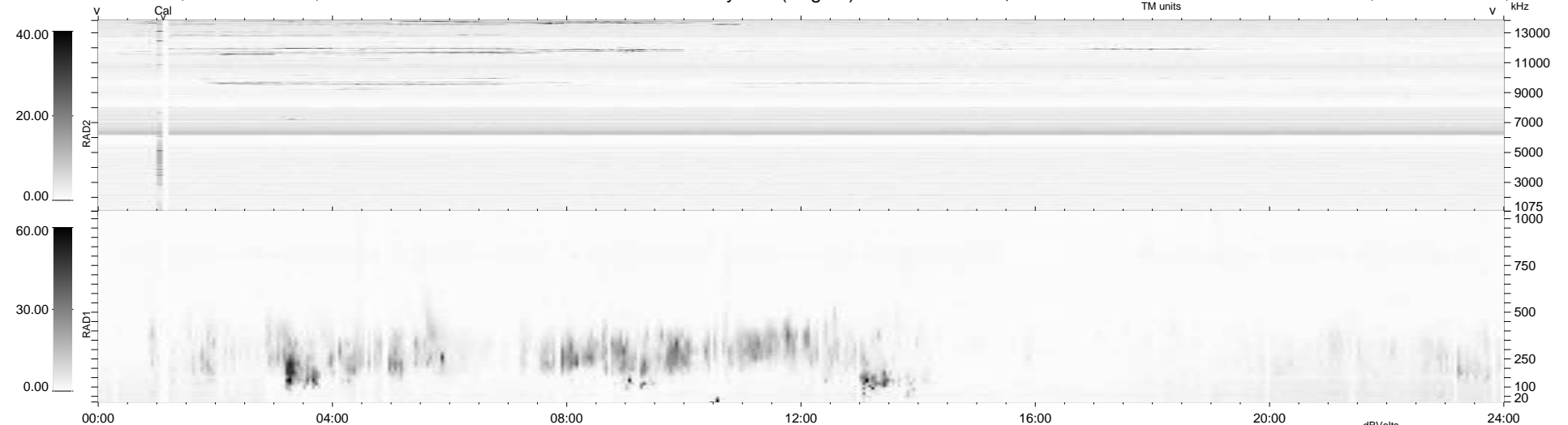
353 bad + 596 good MF/939MF projected (62%) - 0 missing MFs  
 Avg interval = 180 secs  
 Re = 258.69 (258.31, -4.29, 13.24 GSE)

windlib 2.0b

LZ version = v01

### WIND/WAVES Summary Plot (Page 1) for 05-FEB-2021, DOY = 36

DAILY 2021-02-06 20:20:06  
 Re = 258.88 (258.42, -7.82, 13.21 GSE)



```

RAD2
Antenna Ey .....
Mode LIN(1) .....
SUM/SEP SEP .....
Toggle OFF .....

RAD1
Antenna Ex .....
Mode LIS(2,4) .....
SUM/SEP SUM .....
Toggle OFF .....

TNR
Antenna ExEy .....
Mode A-32 .....
Sweep ACE .....
  
```