

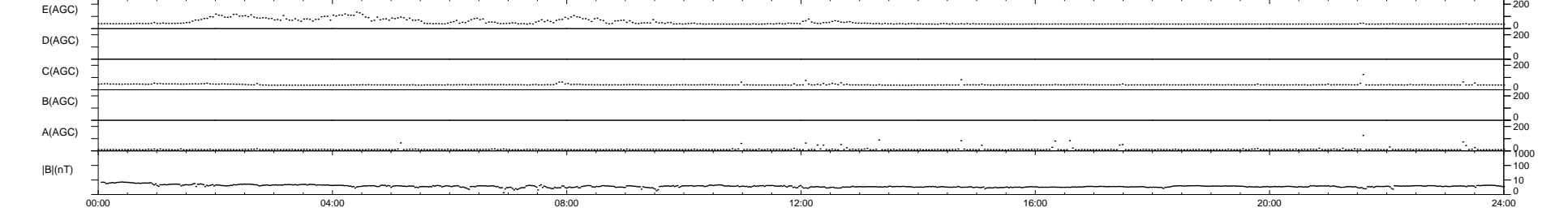
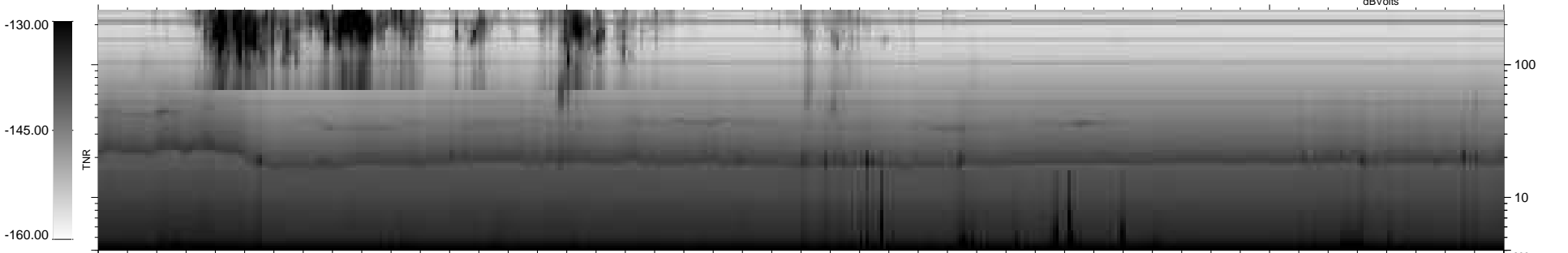
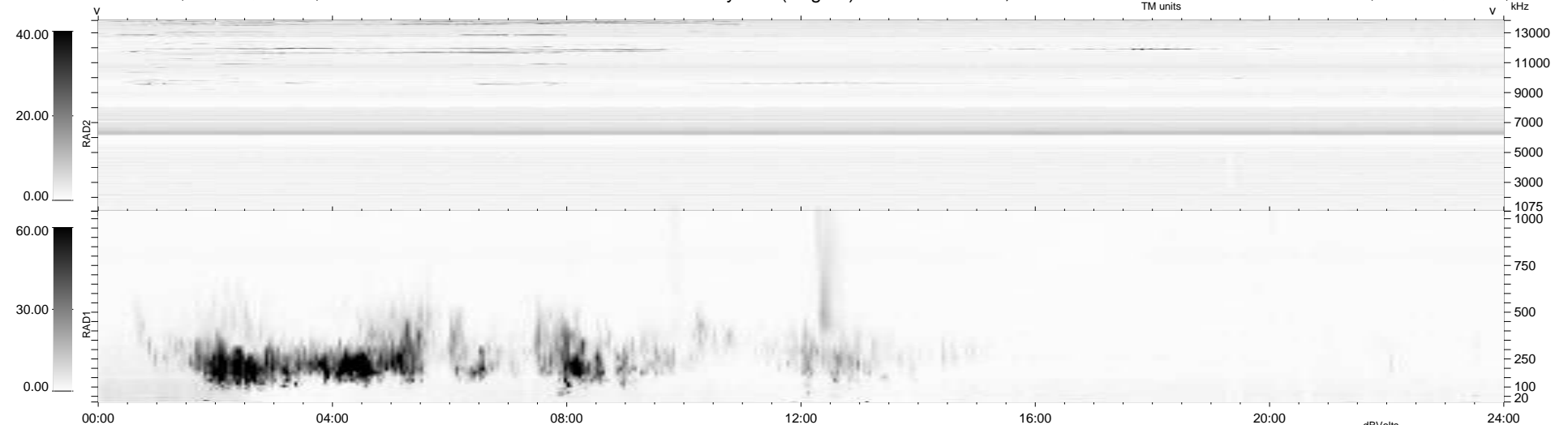
110 bad + 829 good MF/939MF projected (88%) - 0 missing MFs
 Avg interval = 180 secs
 Re = 258.49 (258.15, -0.69, 13.26 GSE)

windlib 2.0b

LZ version = v02

WIND/WAVES Summary Plot (Page 1) for 04-FEB-2021, DOY = 35

DAILY 2021-02-06 00:20:05
 Re = 258.69 (258.31, -4.26, 13.24 GSE)



```

RAD2
Antenna Ey .....
Mode LIN(1) .....
SUM/SEP SEP .....
Toggle OFF .....

RAD1
Antenna Ex .....
Mode LIS(2,4) .....
SUM/SEP SUM .....
Toggle OFF .....

TNR
Antenna ExEy .....
Mode A-32 .....
Sweep ACE .....
  
```