

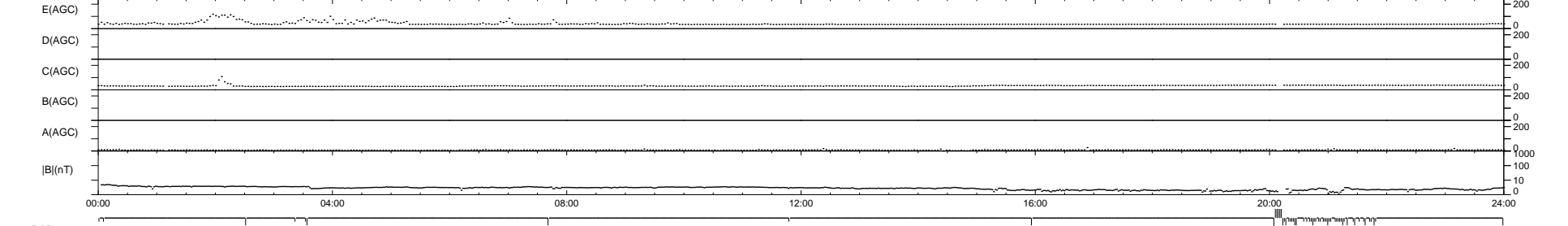
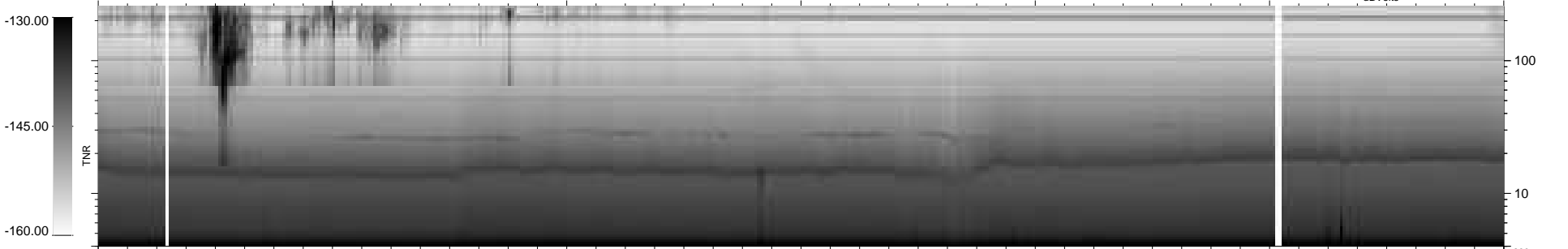
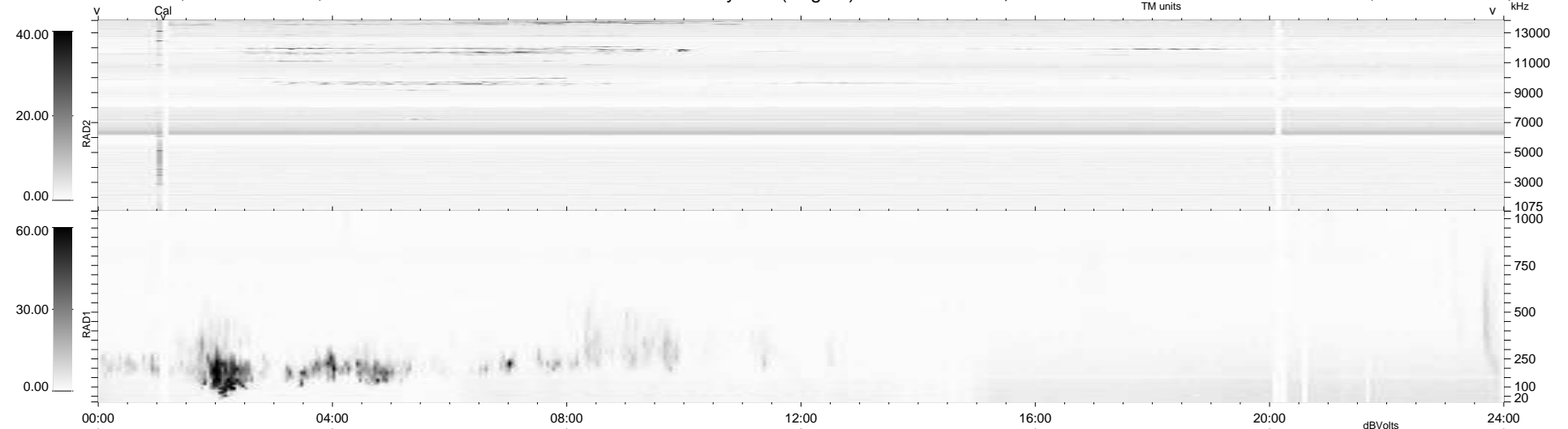
52 bad + 882 good MF/939MF projected (93%) - 5 missing MFs
 Avg interval = 180 secs
 Re = 257.43 (255.89, 24.99, 12.93 GSE)

windlib 2.0b

LZ version = v01

WIND/WAVES Summary Plot (Page 1) for 28-JAN-2021, DOY = 28

DAILY 2021-01-29 13:20:43
 Re = 257.51 (256.29, 21.37, 13.02 GSE)



```

RAD2
Antenna Ey .....
Mode LIN(1) .....
SUM/SEP SEP .....
Toggle OFF .....

RAD1
Antenna Ex .....
Mode LIS(2,4) .....
SUM/SEP SUM .....
Toggle OFF .....

TNR
Antenna ExEy .....
Mode A-32 .....
Sweep ACE .....
  
```