

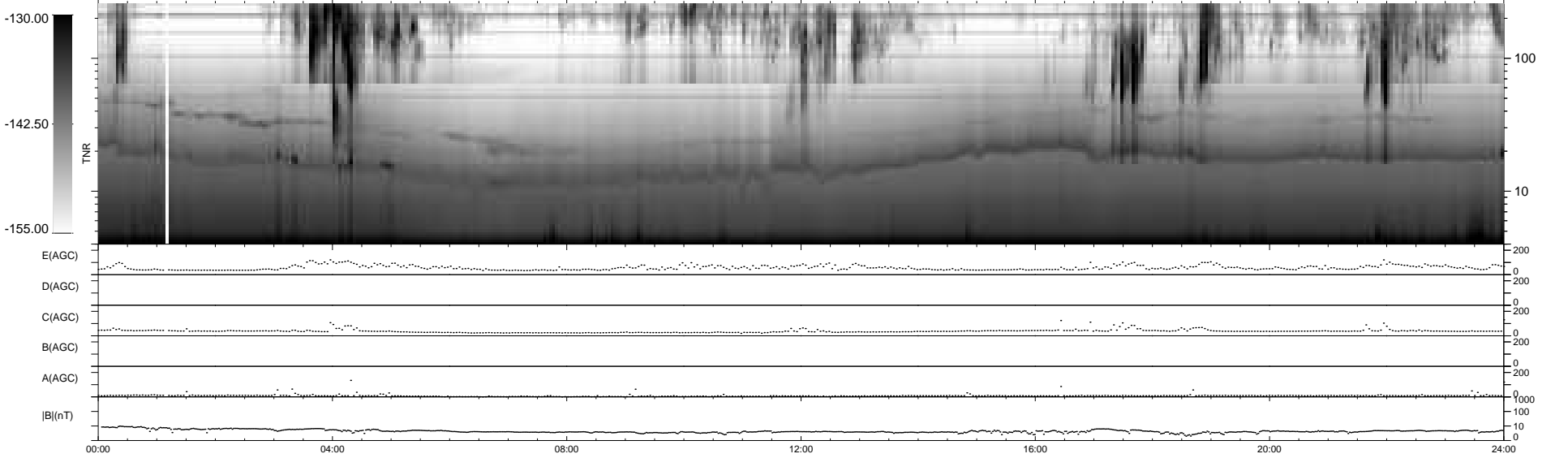
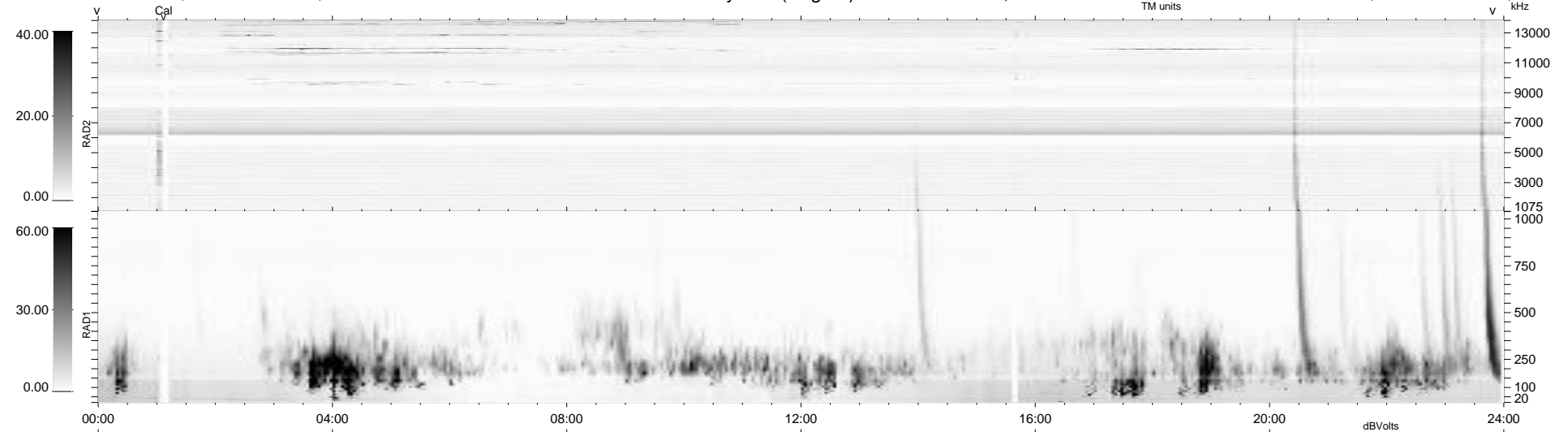
11 bad + 928 good MF/939MF projected (98%) - 0 missing MFs
Avg interval = 180 secs
Re = 257.34 (255.01, 32.17, 12.69 GSE)

windlib 2.0b

LZ version = v01

WIND/WAVES Summary Plot (Page 1) for 26-JAN-2021, DOY = 26

DAILY 2021-01-27 13:20:44
Re = 257.37 (255.46, 28.63, 12.81 GSE)



RAD2
Antenna Ey
Mode LIN(1)
SUM/SEP SEP
Toggle OFF
RAD1
Antenna Ex
Mode LIS(2,4)
SUM/SEP SUM
Toggle OFF
TNR
Antenna ExEy
Mode A-32
Sweep ACE