

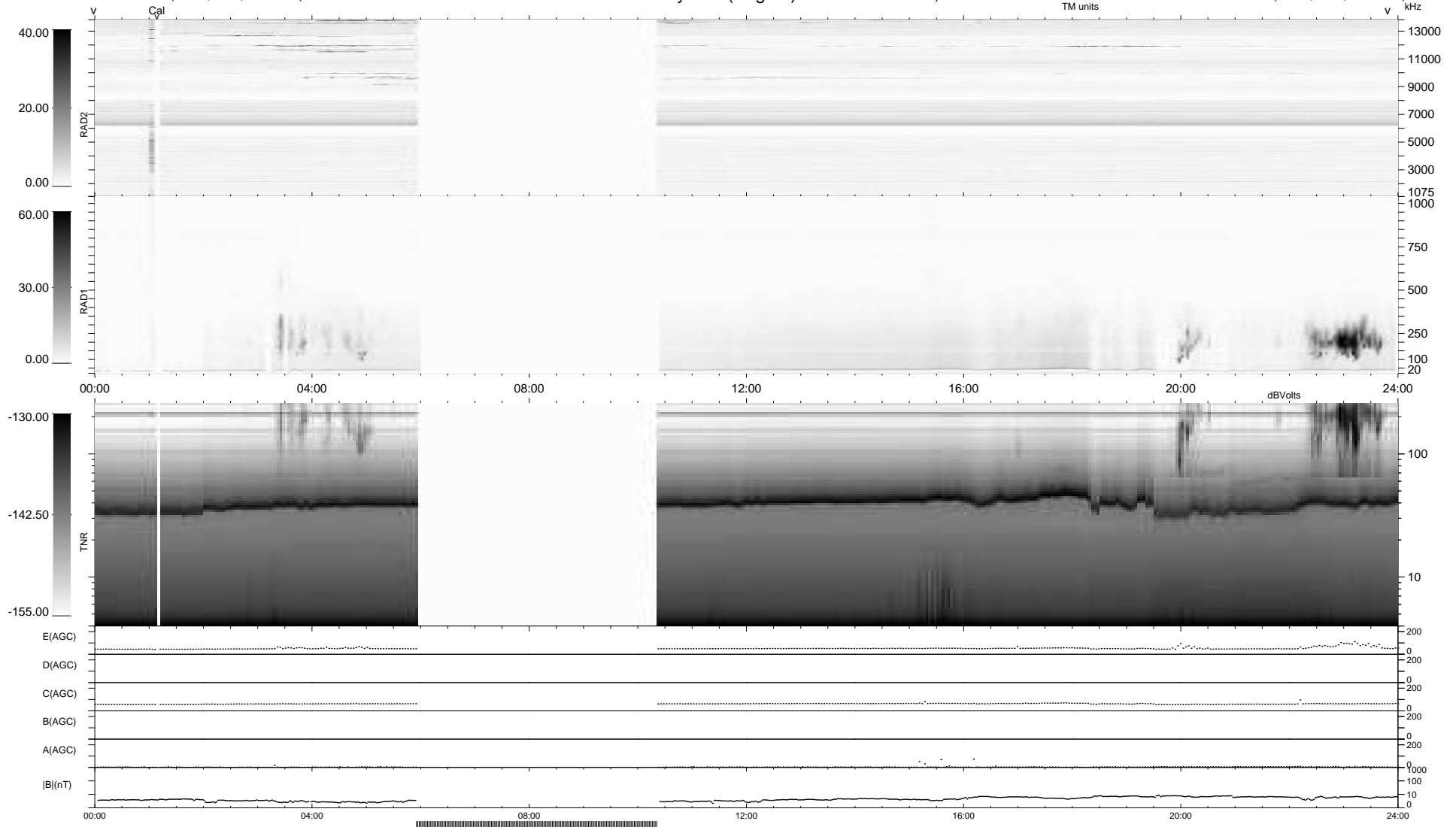
69 bad + 696 good MF/939MF projected (74%) - 174 missing MFs  
 Avg interval = 180 secs  
 Re = 257.02 (250.13, 58.03, 11.27 GSE)

windlib 2.0b

LZ version = v01

### WIND/WAVES Summary Plot (Page 1) for 18-JAN-2021, DOY = 18

DAILY 2021-01-19 14:20:04  
 Re = 257.13 (250.89, 55.13, 11.48 GSE)



RAD2  
 Antenna Ey .....  
 Mode LIN(1) .....  
 SUM/SEP SEP .....  
 Toggle OFF .....  
 RAD1  
 Antenna Ex .....  
 Mode LIS(2,4) .....  
 SUM/SEP SUM .....  
 Toggle OFF .....  
 TNR  
 Antenna ExEy .....  
 Mode A-32 .....  
 Sweep ACE .....