

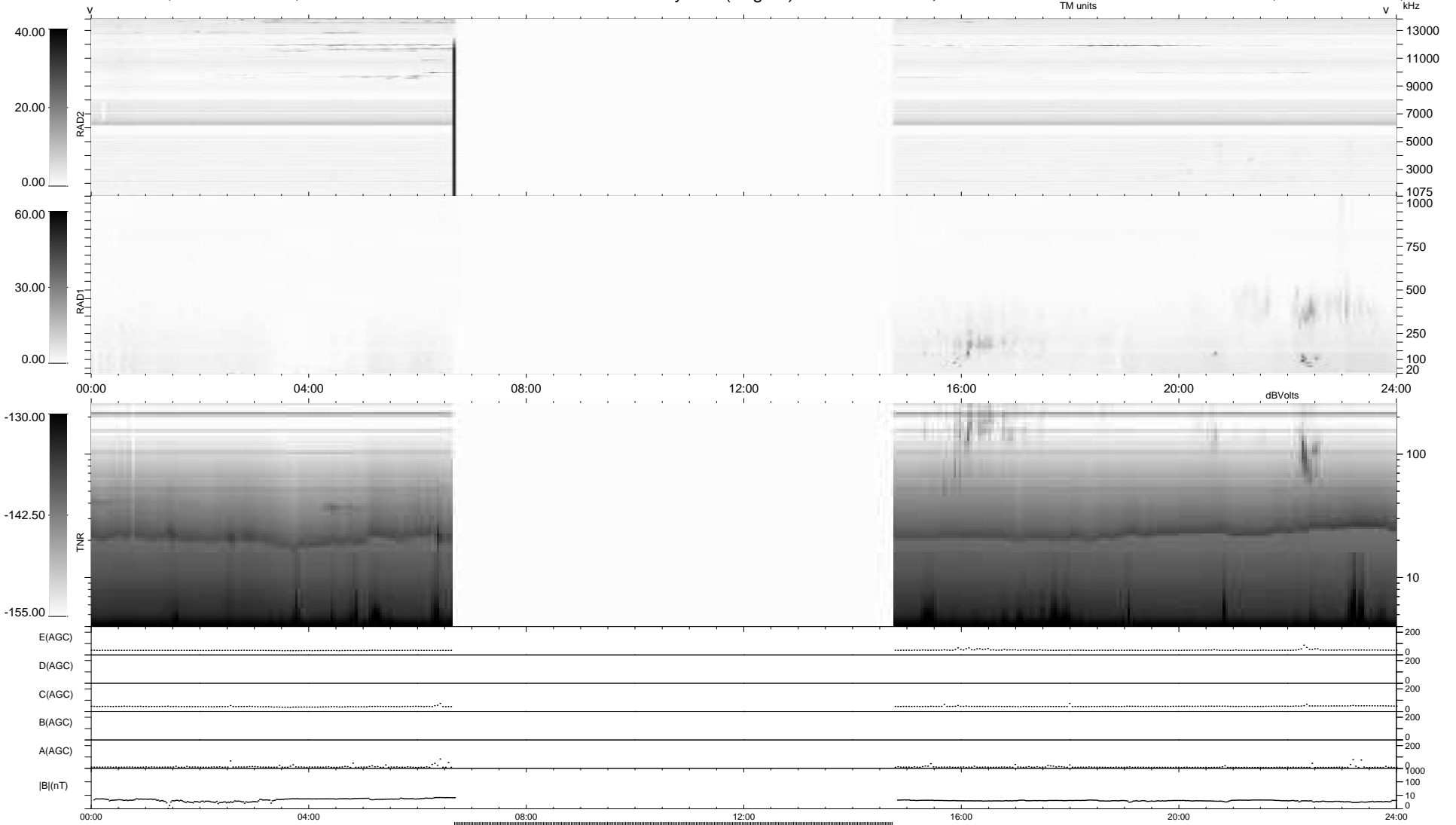
50 bad + 573 good MF/939MF projected (61%) - 316 missing MFs
 Avg interval = 180 secs
 Re = 255.70 (245.38, 71.19, 10.09 GSE)

windlib 2.0b

LZ version = v01

WIND/WAVES Summary Plot (Page 1) for 13-JAN-2021, DOY = 13

DAILY 2021-01-15 00:20:06
 Re = 256.08 (246.46, 68.76, 10.34 GSE)



```

RAD2
Antenna Ey .....
Mode LIN(1) .....
SUM/SEP SEP .....
Toggle OFF .....

RAD1
Antenna Ex .....
Mode LIS(2,4) .....
SUM/SEP SUM .....
Toggle OFF .....

TNR
Antenna ExEy .....
Mode A-32 .....
Sweep ACE .....
  
```