

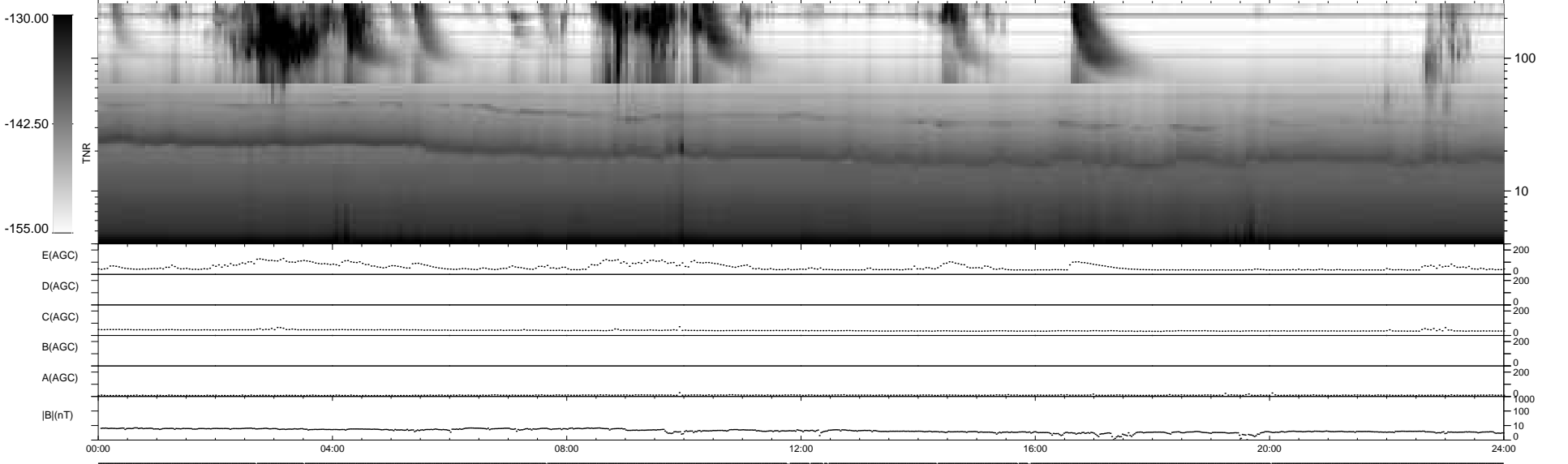
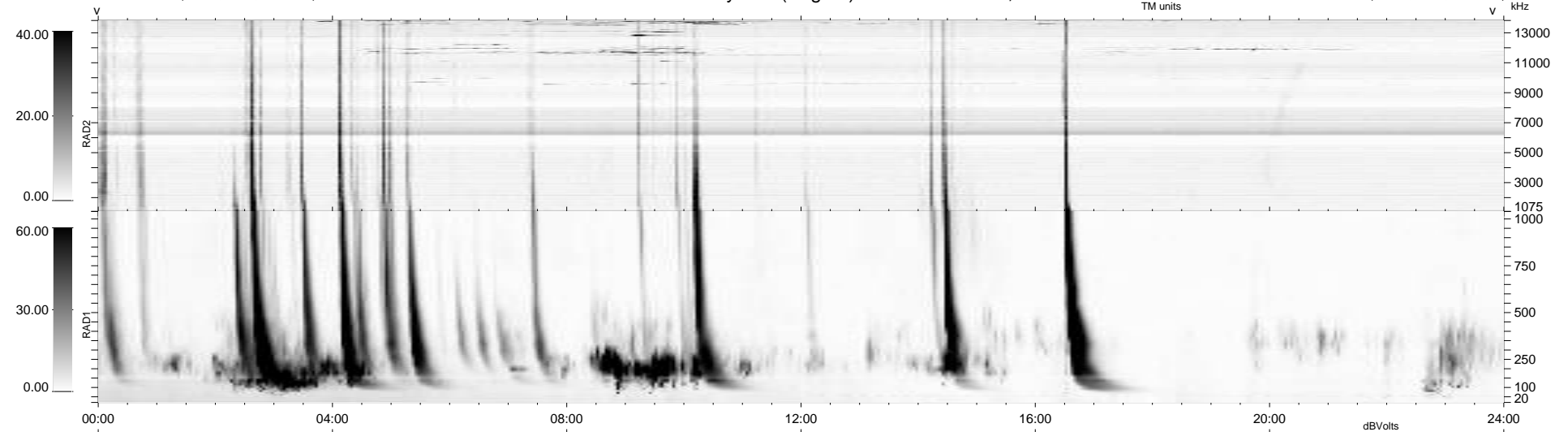
13 bad + 926 good MF/939MF projected (98%) - 0 missing MFs  
 Avg interval = 180 secs  
 Re = 246.63 (226.66, 97.08, 5.47 GSE)

windlib 2.0b

LZ version = v01

### WIND/WAVES Summary Plot (Page 1) for 30-DEC-2020, DOY = 365

DAILY 2020-12-31 14:20:51  
 Re = 247.34 (227.96, 95.82, 5.86 GSE)



RAD2  
 Antenna Ey  
 Mode LIN(1)  
 SUM/SEP SEP  
 Toggle OFF

RAD1  
 Antenna Ex  
 Mode LIS(2,4)  
 SUM/SEP SUM  
 Toggle OFF

TNR  
 Antenna ExEy  
 Mode A-32  
 Sweep ACE