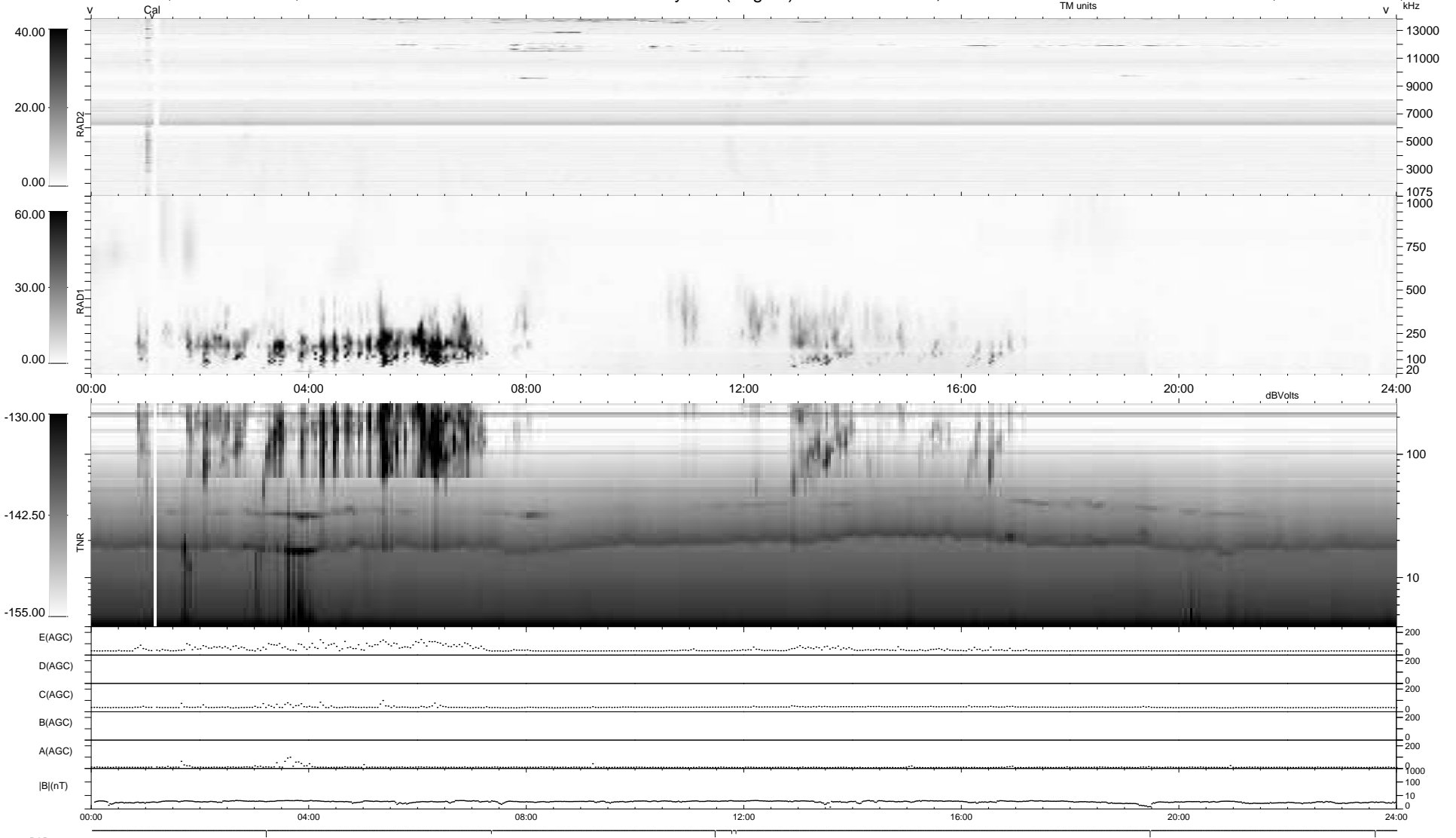


7 bad + 932 good MF/939MF projected (99%) - 0 missing MFs
 Avg interval = 180 secs
 Re = 242.85 (220.62, 101.45, 3.40 GSE)

windlib 2.0b LZ version = v01
 DAILY 2020-12-26 20:20:05
 Re = 243.64 (221.75, 100.86, 3.82 GSE)

WIND/WAVES Summary Plot (Page 1) for 25-DEC-2020, DOY = 360



```

RAD2
Antenna Ey .....
Mode LIN(1) .....
SUM/SEP SEP .....
Toggle OFF .....

RAD1
Antenna Ex .....
Mode LIS(2,4) .....
SUM/SEP SUM .....
Toggle OFF .....

TNR
Antenna ExEy .....
Mode A-32 .....
Sweep ACE .....
  
```