

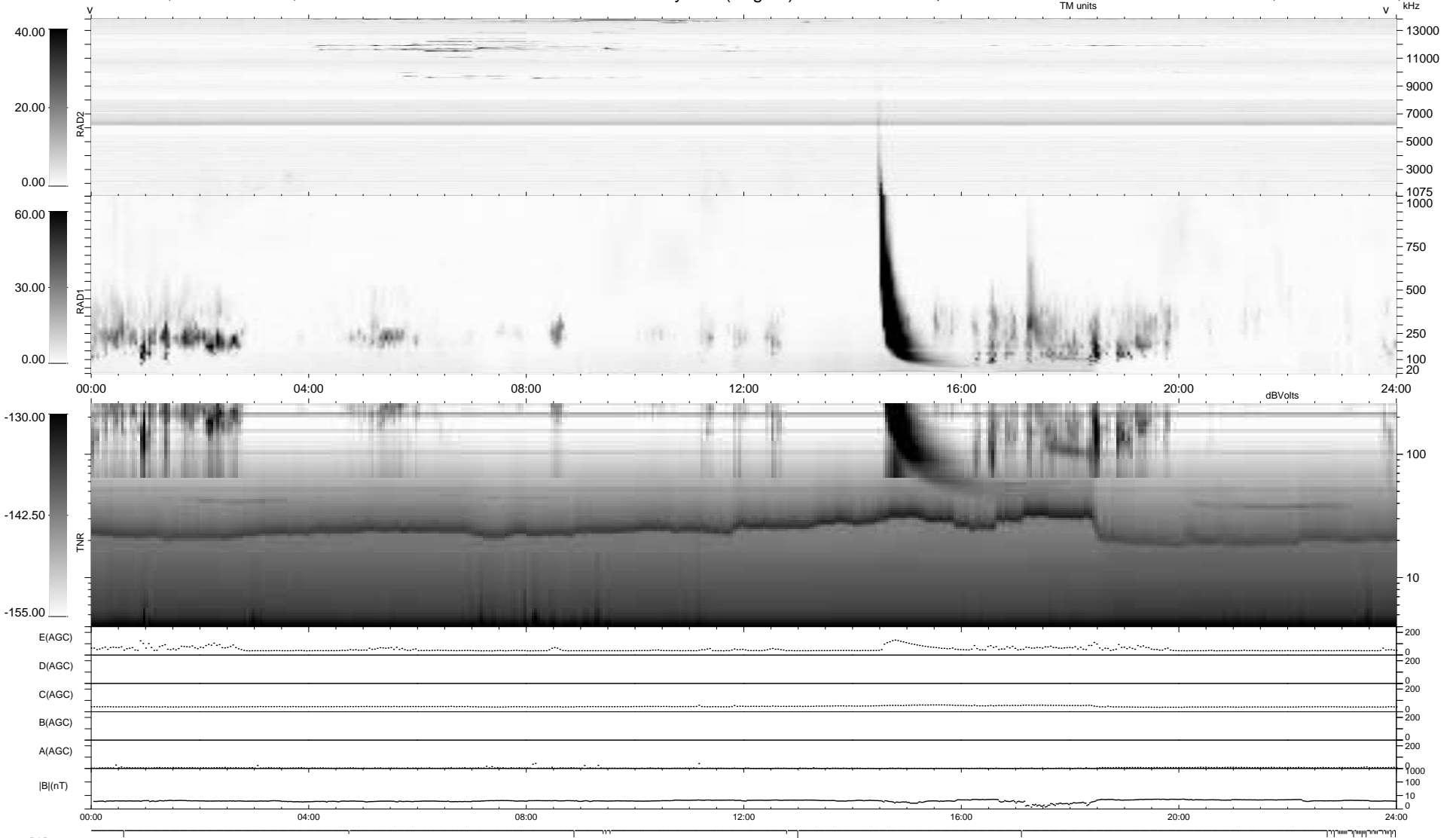
41 bad + 898 good MF/939MF projected (95%) - 0 missing MFs
 Avg interval = 180 secs
 Re = 231.04 (209.34, 97.75, -1.20 GSE)

windlib 2.0b

LZ version = v01

WIND/WAVES Summary Plot (Page 1) for 14-DEC-2020, DOY = 349

DAILY 2020-12-15 20:20:06
 Re = 232.39 (210.34, 98.82, -0.79 GSE)



```

RAD2
Antenna Ey .....
Mode LIN(1) .....
SUM/SEP SEP .....
Toggle OFF .....

RAD1
Antenna Ex .....
Mode LIS(2,4) .....
SUM/SEP SUM .....
Toggle OFF .....

TNR
Antenna ExEy .....
Mode A-32 .....
Sweep ACE .....
  
```