

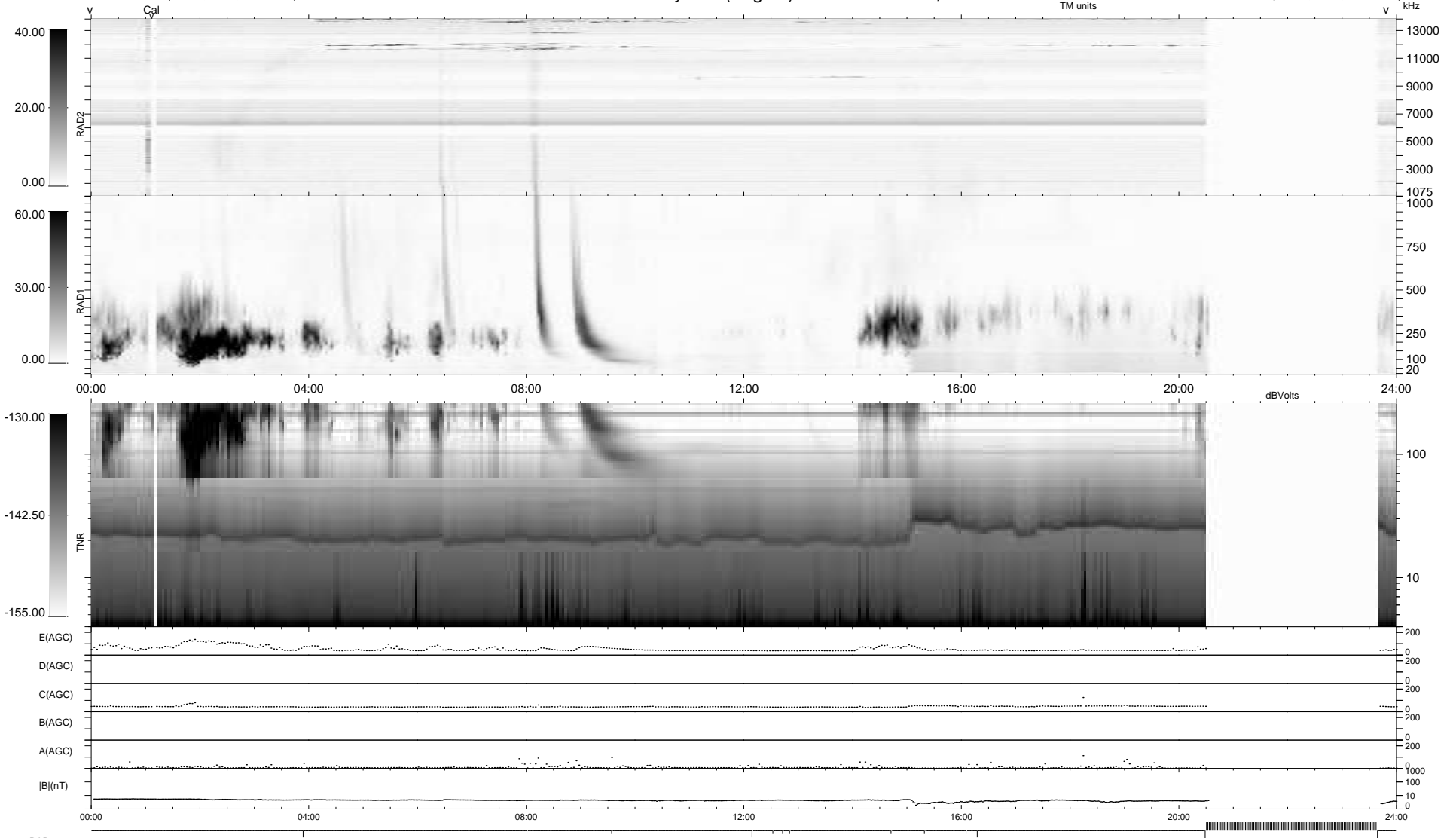
13 bad + 803 good MF/939MF projected (85%) - 123 missing MFs  
 Avg interval = 180 secs  
 Re = -229.63 (208.34, 96.55, -1.61 GSE)

windlib 2.0b

LZ version = v01

### WIND/WAVES Summary Plot (Page 1) for 13-DEC-2020, DOY = 348

DAILY 2020-12-14 23:20:06  
 Re = 231.03 (209.34, 97.74, -1.20 GSE)



```

RAD2
Antenna Ey .....
Mode LIN(1) .....
SUM/SEP SEP .....
Toggle OFF .....

RAD1
Antenna Ex .....
Mode LIS(2/4) .....
SUM/SEP SUM .....
Toggle OFF .....

TNR
Antenna ExEy .....
Mode A-32 .....
Sweep ACE .....
  
```