

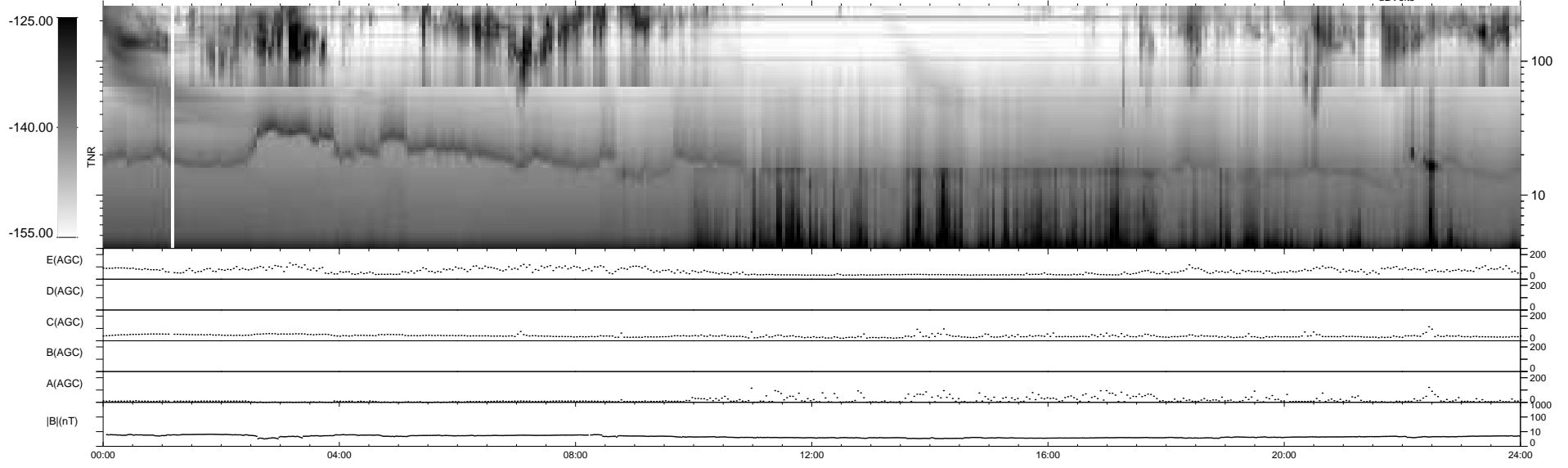
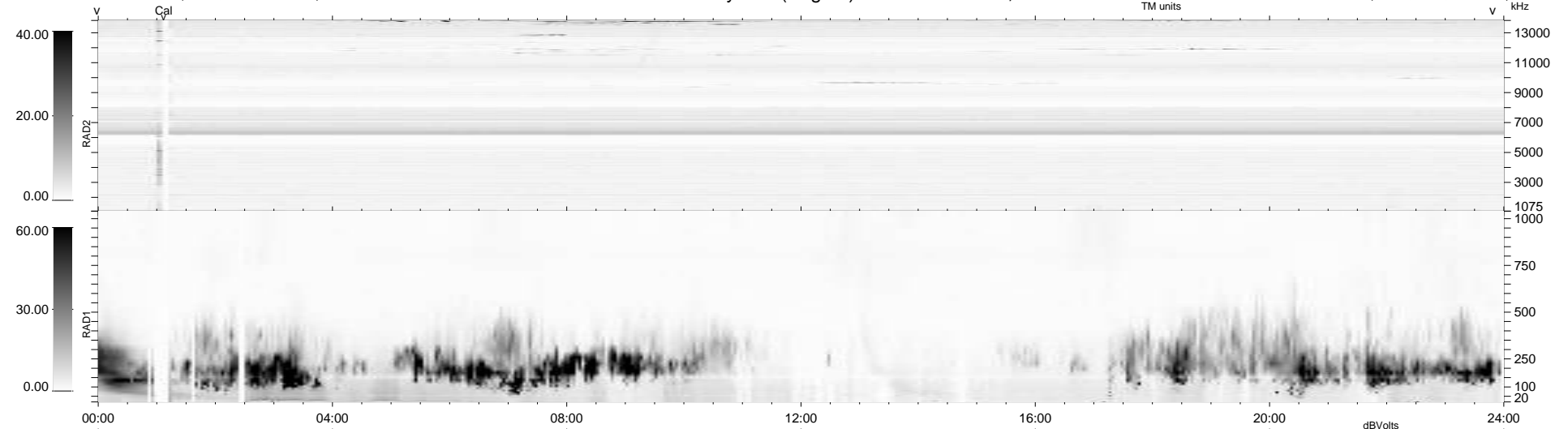
57 bad + 882 good MF/939MF projected (93%) - 0 missing MFs
 Avg interval = 180 secs
 Re = 226.69 (206.35, 93.82, -2.42 GSE)

windlib 2.0b

LZ version = v01

WIND/WAVES Summary Plot (Page 1) for 11-DEC-2020, DOY = 346

DAILY 2020-12-12 21:20:05
 Re = 228.17 (207.33, 95.23, -2.02 GSE)



RAD2
 Antenna Ey
 Mode LIN(1)
 SUM/SEP SEP
 Toggle OFF
 RAD1
 Antenna Ex
 Mode LIS(2,4)
 SUM/SEP SUM
 Toggle OFF
 TNR
 Antenna ExEy
 Mode A-32
 Sweep ACE