

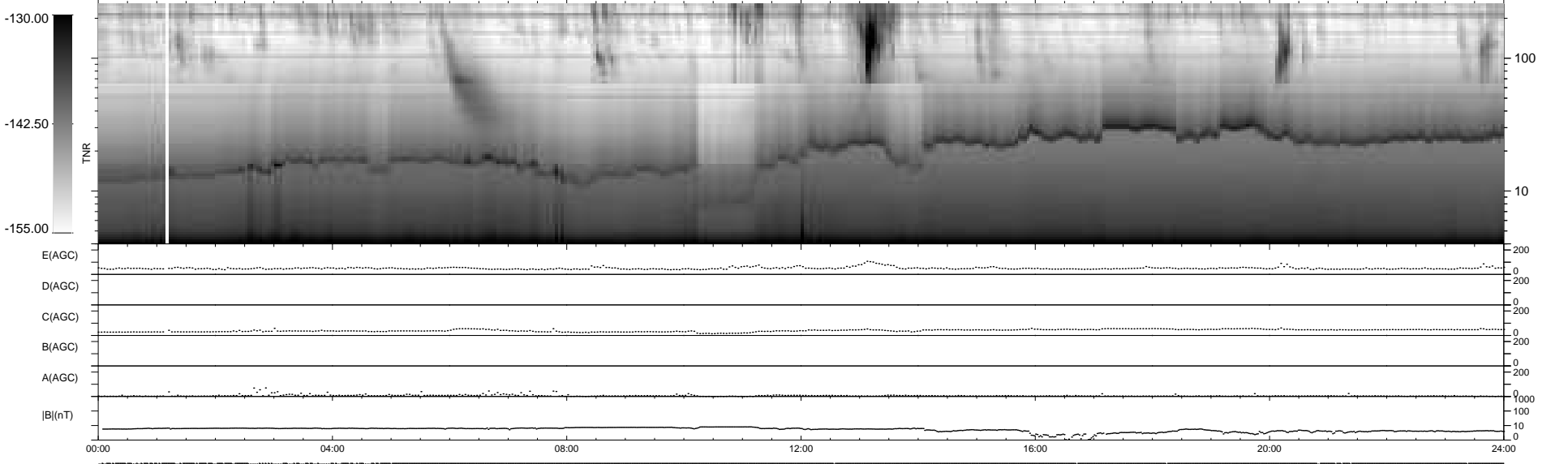
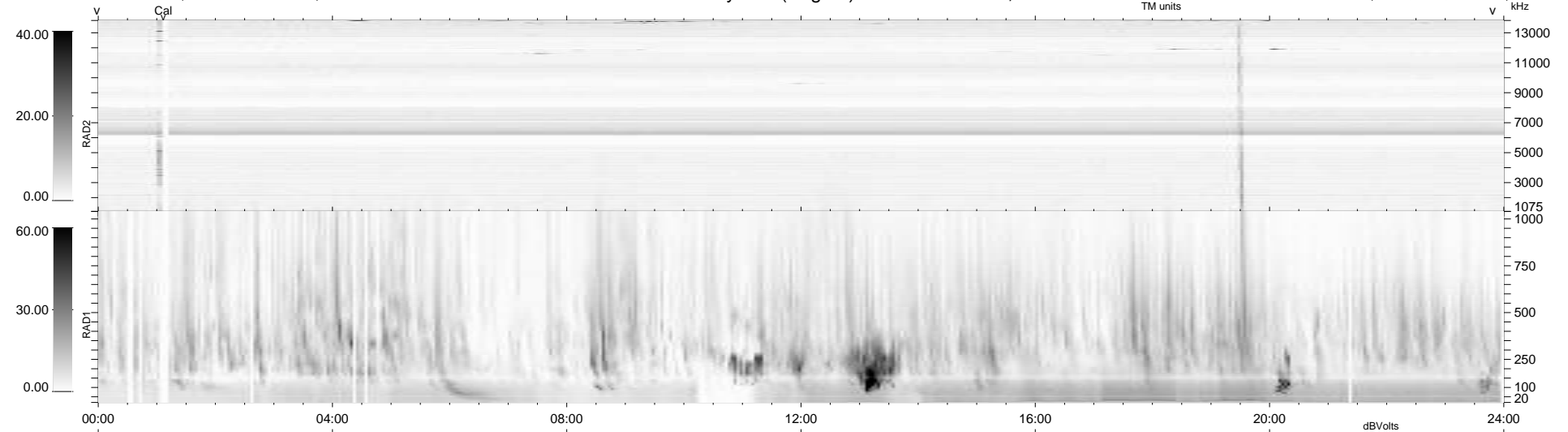
94 bad + 845 good MF/939MF projected (89%) - 0 missing MFs
 Avg interval = 180 secs
 Re = 217.63 (200.97, 83.38, -4.86 GSE)

windlib 2.0b

LZ version = v01

WIND/WAVES Summary Plot (Page 1) for 05-DEC-2020, DOY = 340

DAILY 2020-12-06 18:20:06
 Re = 219.10 (201.75, 85.33, -4.46 GSE)



```

RAD2
Antenna Ey .....
Mode LIN(1) .....
SUM/SEP SEP .....
Toggle OFF .....

RAD1
Antenna Ex .....
Mode LIS(2,4) .....
SUM/SEP SUM .....
Toggle OFF .....

TNR
Antenna ExEy .....
Mode A-32 .....
Sweep ACE .....
  
```