

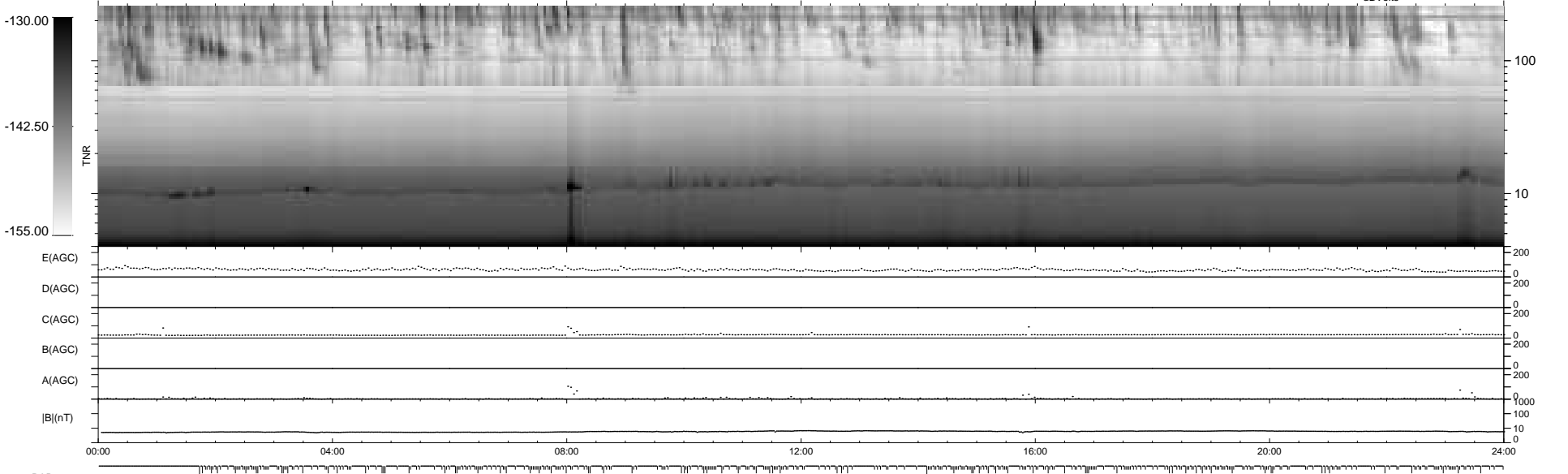
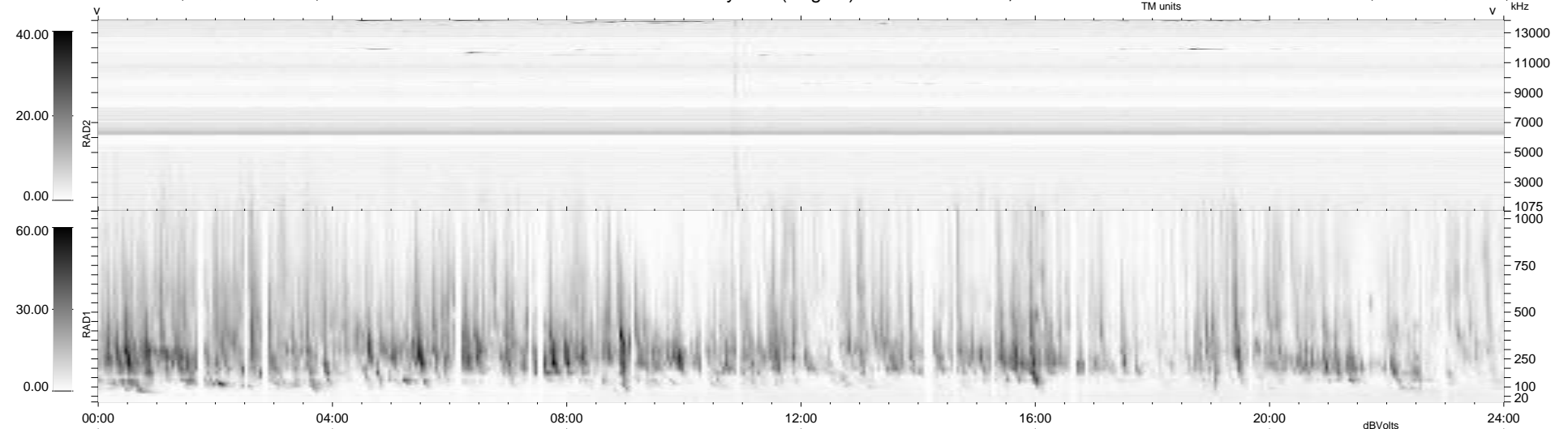
375 bad + 564 good MF/939MF projected (60%) - 0 missing MFs
 Avg interval = 180 secs
 Re = 216.19 (200.24, 81.32, -5.25 GSE)

windlib 2.0b

LZ version = v01

WIND/WAVES Summary Plot (Page 1) for 04-DEC-2020, DOY = 339

DAILY 2020-12-05 14:20:14
 Re = 217.62 (200.96, 83.36, -4.86 GSE)



RAD2
 Antenna Ey
 Mode LIN(1)
 SUM/SEP SEP
 Toggle OFF

RAD1
 Antenna Ex
 Mode LIS(2,4)
 SUM/SEP SUM
 Toggle OFF

TNR
 Antenna ExEy
 Mode A-32
 Sweep ACE