

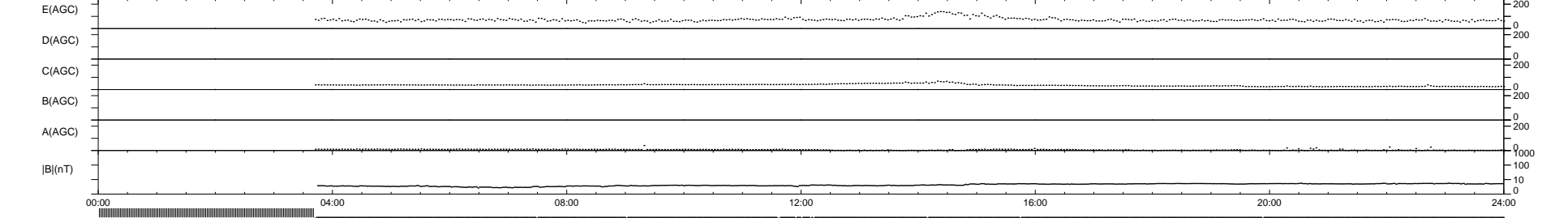
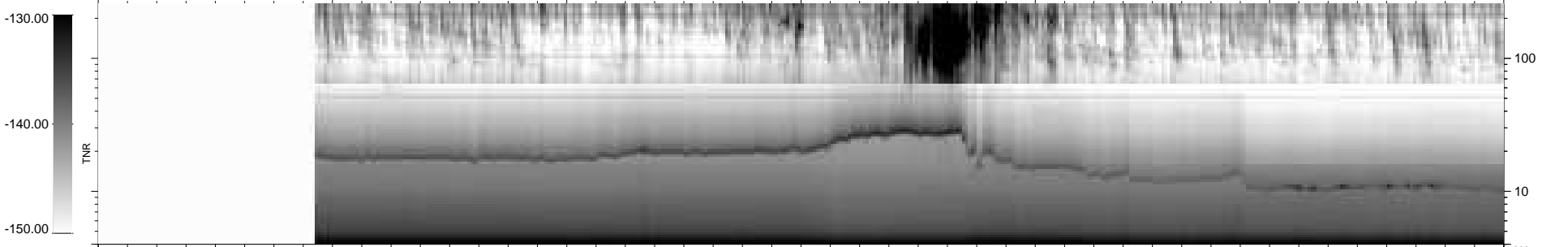
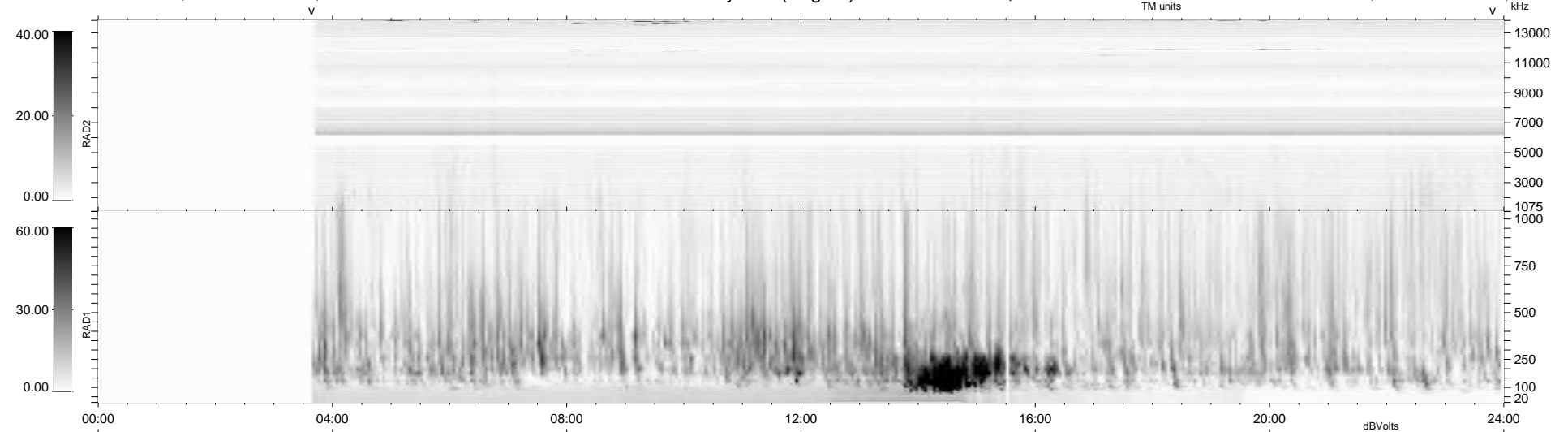
12 bad + 783 good MF/939MF projected (83%) - 144 missing MFs
Avg interval = 180 secs
Re = 214.99 (199.67, 79.51, -5.58 GSE)

windlib 2.0b

LZ version = v01

WIND/WAVES Summary Plot (Page 1) for 03-DEC-2020, DOY = 338

DAILY 2020-12-05 09:20:04
Re = 216.18 (200.24, 81.31, -5.26 GSE)



RAD2 Antenna Mode SUM/SEP Toggle
RAD1 Antenna Mode SUM/SEP Toggle
TNR Antenna Mode Sweep