

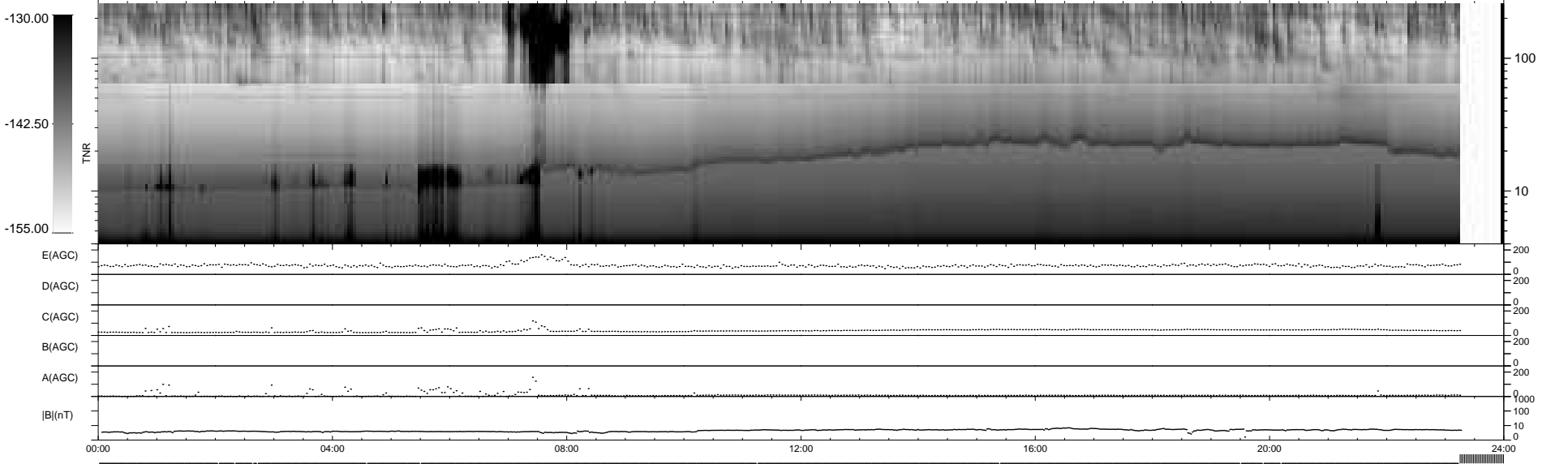
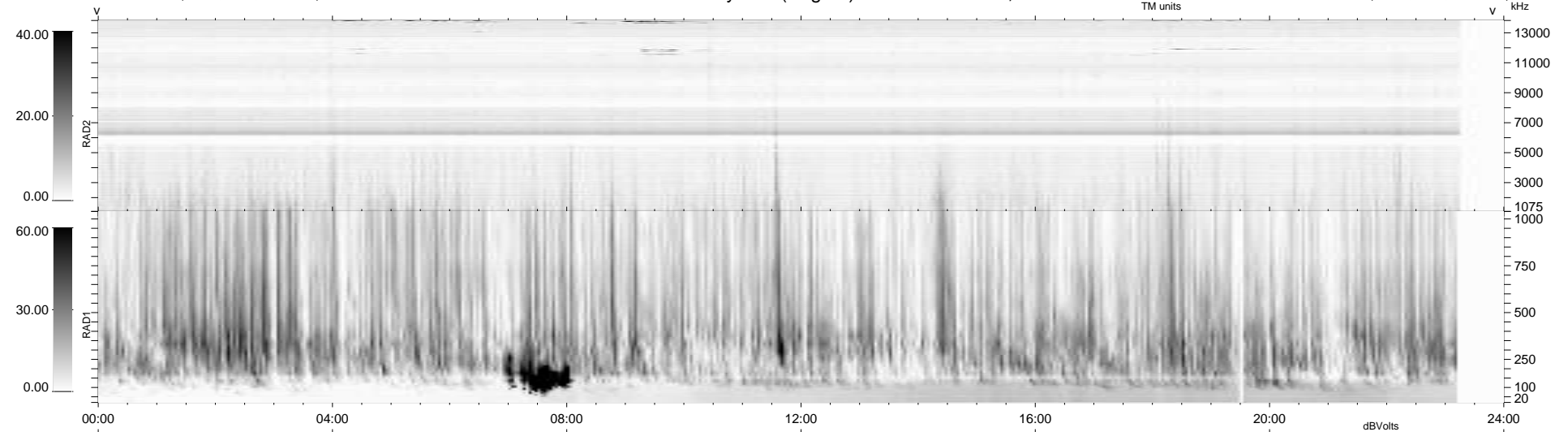
12 bad + 897 good MF/939MF projected (95%) - 30 missing MFs  
 Avg interval = 180 secs  
 Re = 213.41 (198.97, 76.93, -6.03 GSE)

windlib 2.0b

LZ version = v01

### WIND/WAVES Summary Plot (Page 1) for 02-DEC-2020, DOY = 337

DAILY 2020-12-04 12:20:04  
 Re = 214.77 (199.57, 79.16, -5.65 GSE)



RAD2  
 Antenna Ey .....  
 Mode LIN(1) .....  
 SUM/SEP SEP .....  
 Toggle OFF .....  
 RAD1  
 Antenna Ex .....  
 Mode LIS(2,4) .....  
 SUM/SEP SUM .....  
 Toggle OFF .....  
 TNR  
 Antenna ExEy .....  
 Mode A-32 .....  
 Sweep ACE .....