

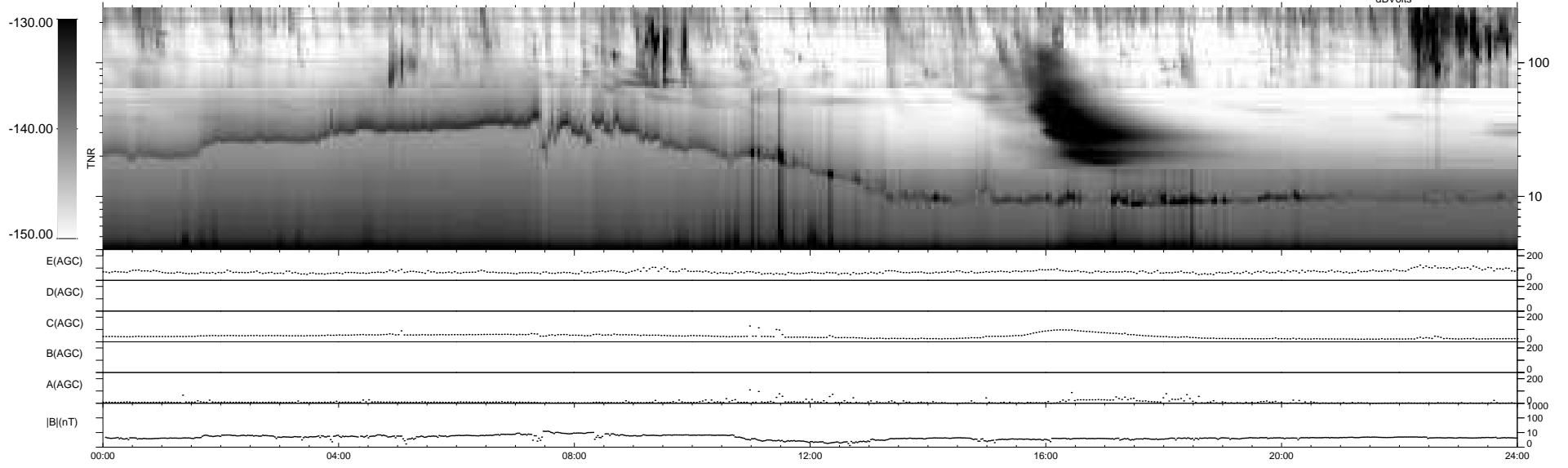
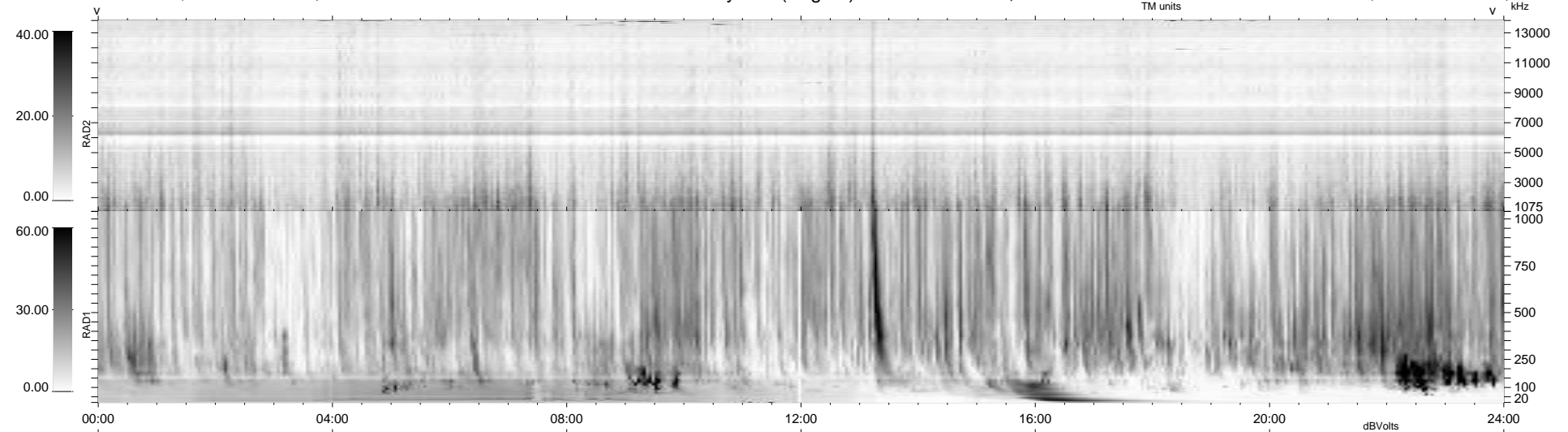
16 bad + 923 good MF/939MF projected (98%) - 0 missing MFs  
 Avg interval = 180 secs  
 Re = 210.80 (197.97, 72.12, -6.76 GSE)

windlib 2.0b

LZ version = v01

### WIND/WAVES Summary Plot (Page 1) for 30-NOV-2020, DOY = 335

DAILY 2020-12-01 20:20:06  
 Re = 212.08 (198.43, 74.56, -6.40 GSE)



RAD2  
 Antenna Ey  
 Mode LIN(1)  
 SUM/SEP SEP  
 Toggle OFF

RAD1  
 Antenna Ex  
 Mode LIS(2,4)  
 SUM/SEP SUM  
 Toggle OFF

TNR  
 Antenna ExEy  
 Mode A-32  
 Sweep ACE