

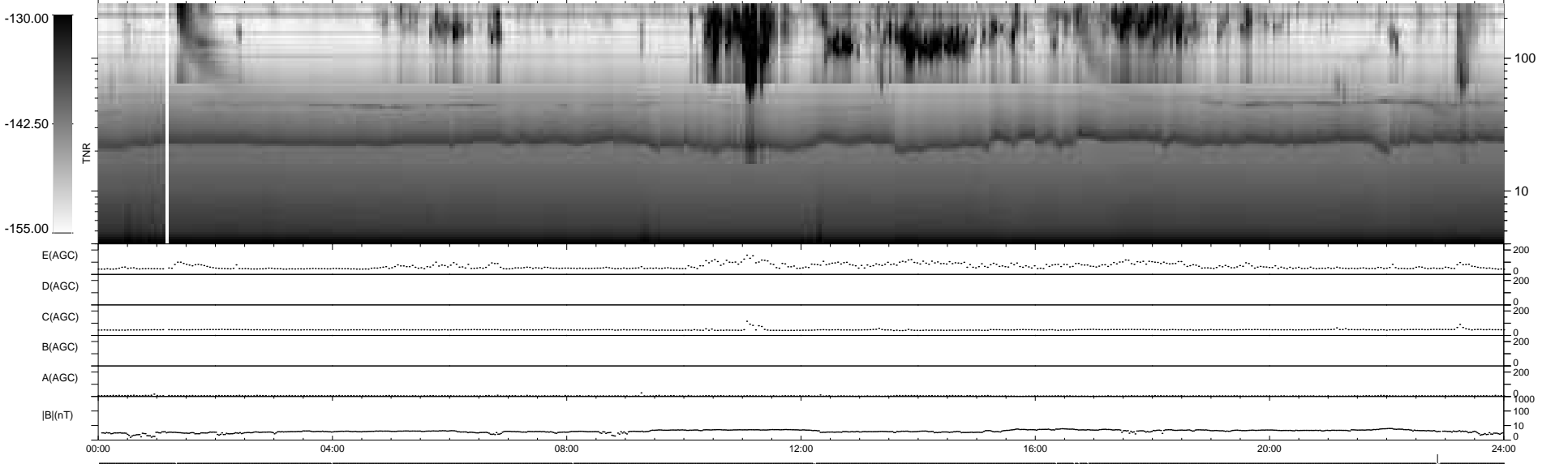
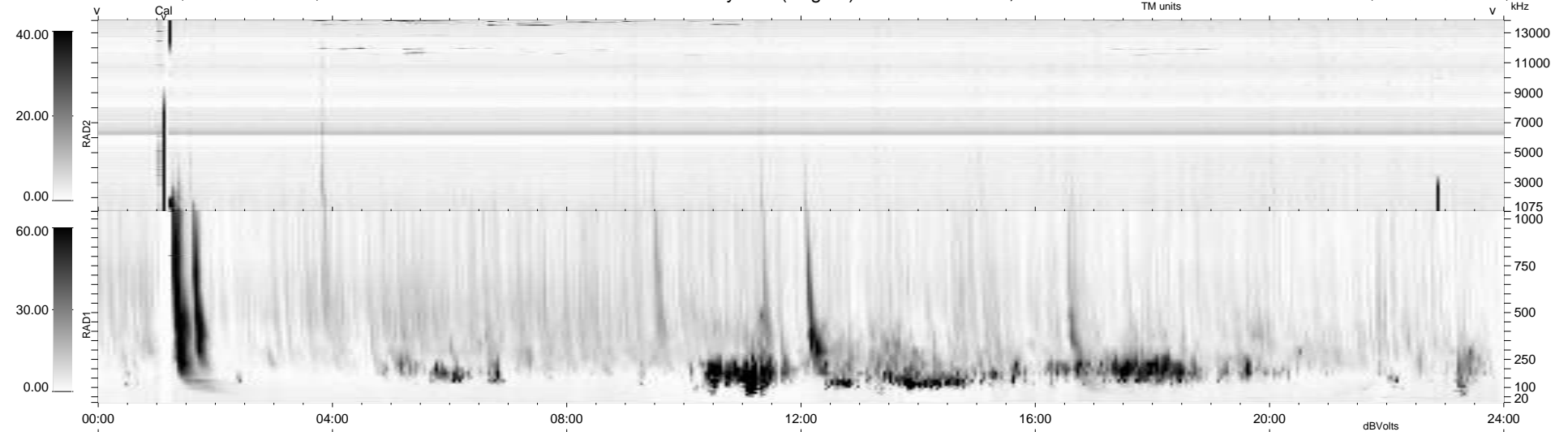
11 bad + 927 good MF/939MF projected (98%) - 1 missing MF
 Avg interval = 180 secs
 Re = 205.15 (196.55, 58.18, -8.39 GSE)

windlib 2.0b

LZ version = v01

WIND/WAVES Summary Plot (Page 1) for 25-NOV-2020, DOY = 330

DAILY 2020-11-26 12:20:05
 Re = 206.17 (196.72, 61.18, -8.10 GSE)



RAD2
 Antenna Ey
 Mode LIN(1)
 SUM/SEP SEP
 Toggle OFF
 RAD1
 Antenna Ex
 Mode LIS(2,4)
 SUM/SEP SUM
 Toggle OFF
 TNR
 Antenna ExEy
 Mode A-32
 Sweep ACE