

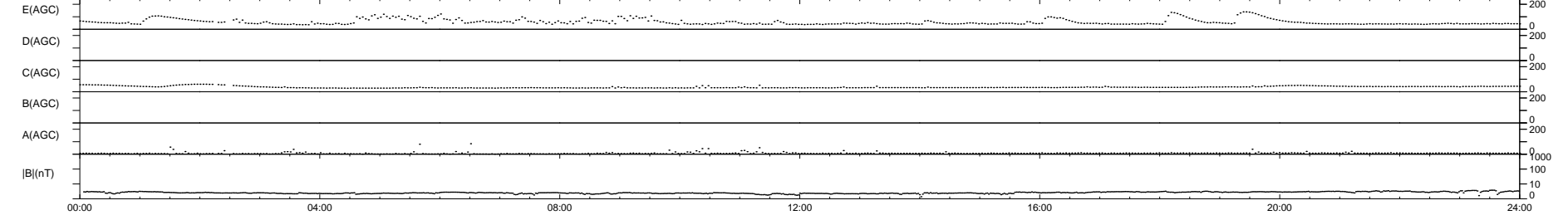
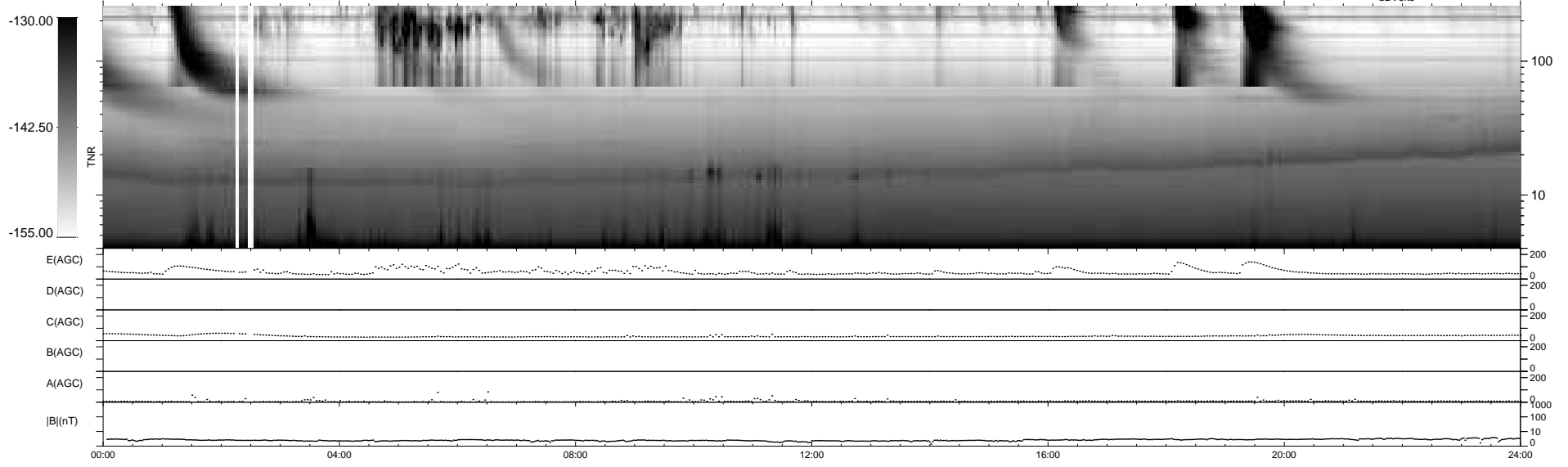
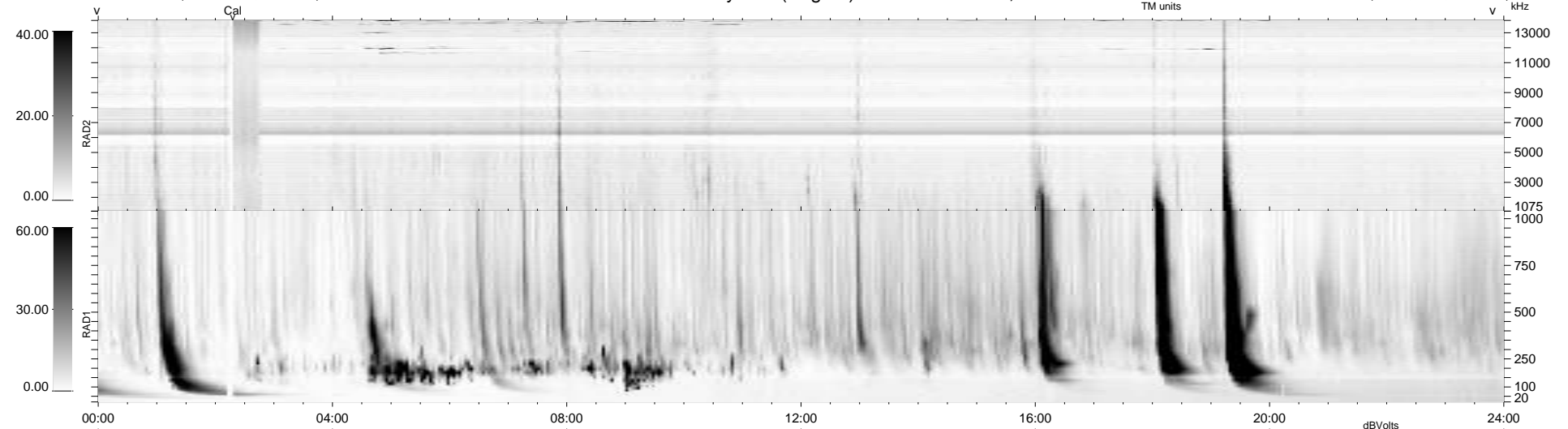
11 bad + 928 good MF/939MF projected (98%) - 0 missing MFs  
 Avg interval = 180 secs  
 Re = 204.18 (196.43, 55.06, -8.67 GSE)

windlib 2.0b

LZ version = v01

### WIND/WAVES Summary Plot (Page 1) for 24-NOV-2020, DOY = 329

DAILY 2020-11-25 12:20:06  
 Re = 205.15 (196.55, 58.16, -8.39 GSE)



```

RAD2
Antenna Ey ..... LIN(U) .....
Mode LIN(1) ..... LIN(U) .....
SUM/SEP SEP ..... SEP .....
Toggle OFF .....

RAD1
Antenna Ex ..... LIS(2,4) .....
Mode LIS(2,4) ..... LIS(2,4) .....
SUM/SEP SUM .....
Toggle OFF .....

TNR
Antenna ExEy .....
Mode A-32 .....
Sweep ACE .....
  
```