

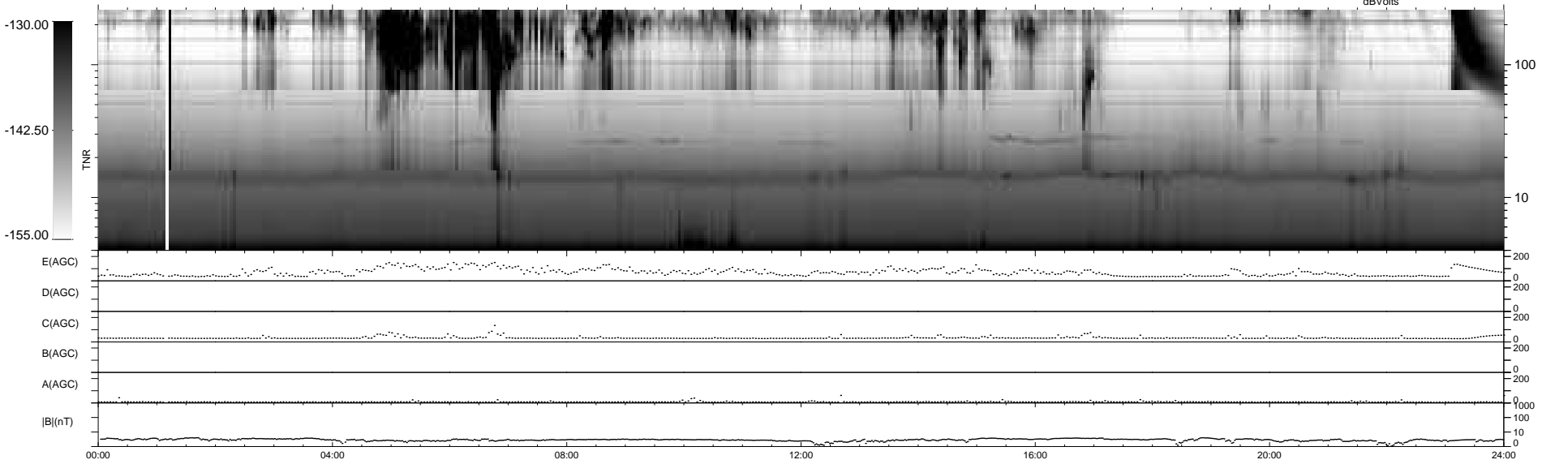
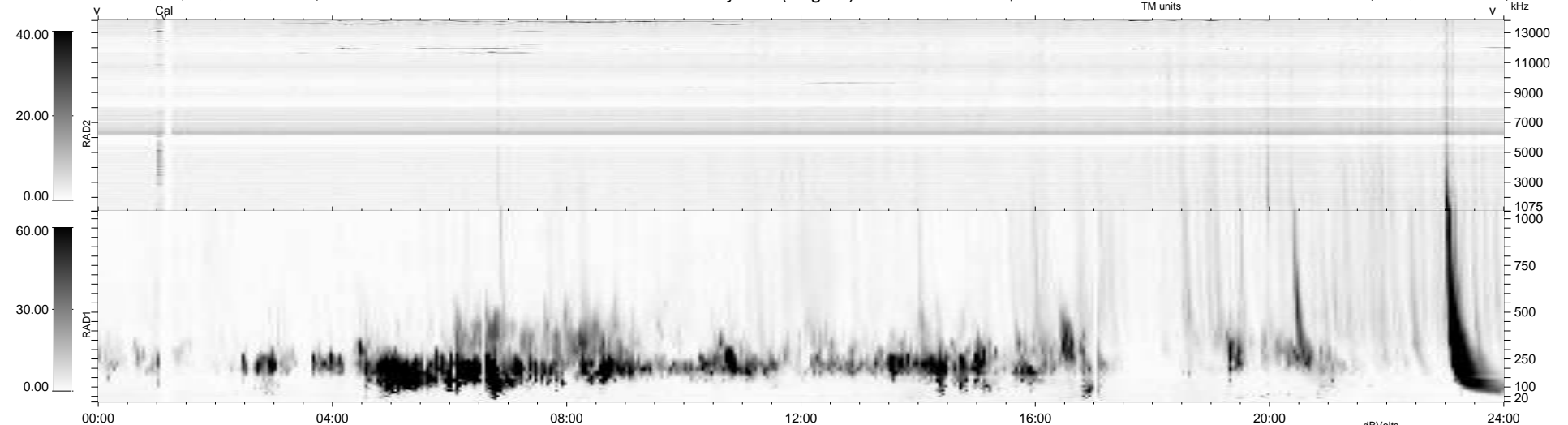
18 bad + 922 good MF/940MF projected (98%) - 0 missing MFs
 Avg interval = 180 secs
 Re = 203.26 (196.34, 51.82, -8.93 GSE)

windlib 2.0b

LZ version = v01

WIND/WAVES Summary Plot (Page 1) for 23-NOV-2020, DOY = 328

DAILY 2020-11-24 10:20:05
 Re = 204.17 (196.43, 55.03, -8.67 GSE)



```

RAD2
Antenna Ey .....
Mode LIN(1) .....
SUM/SEP SEP .....
Toggle OFF .....

RAD1
Antenna Ex .....
Mode LIS(2,4) .....
SUM/SEP SUM .....
Toggle OFF .....

TNR
Antenna ExEy .....
Mode A-32 .....
Sweep ACE .....
  
```