

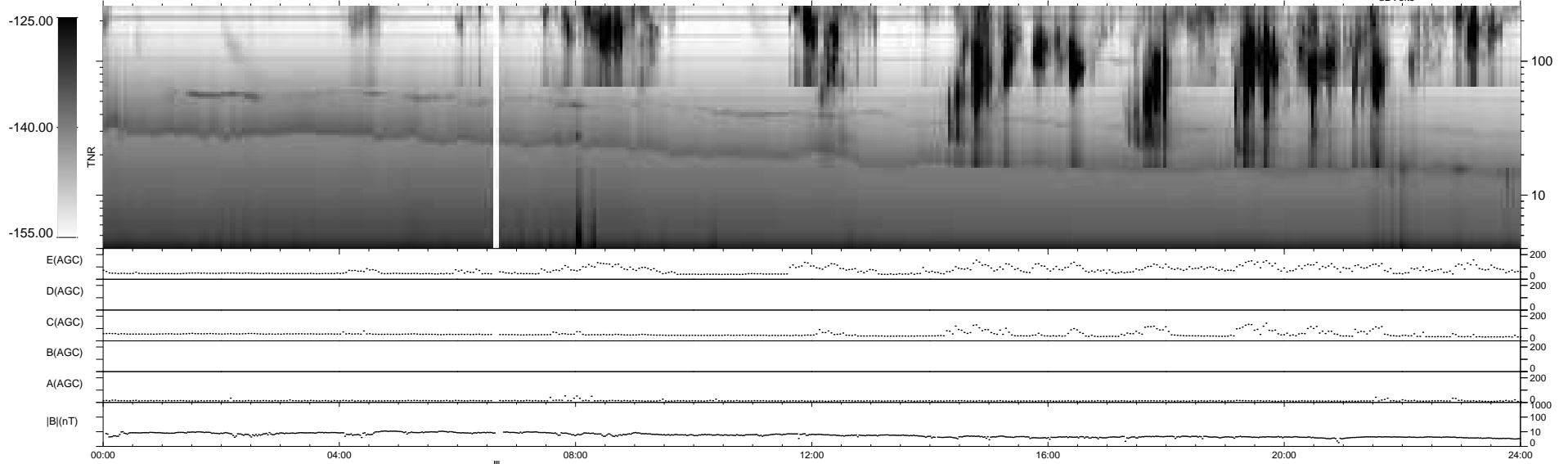
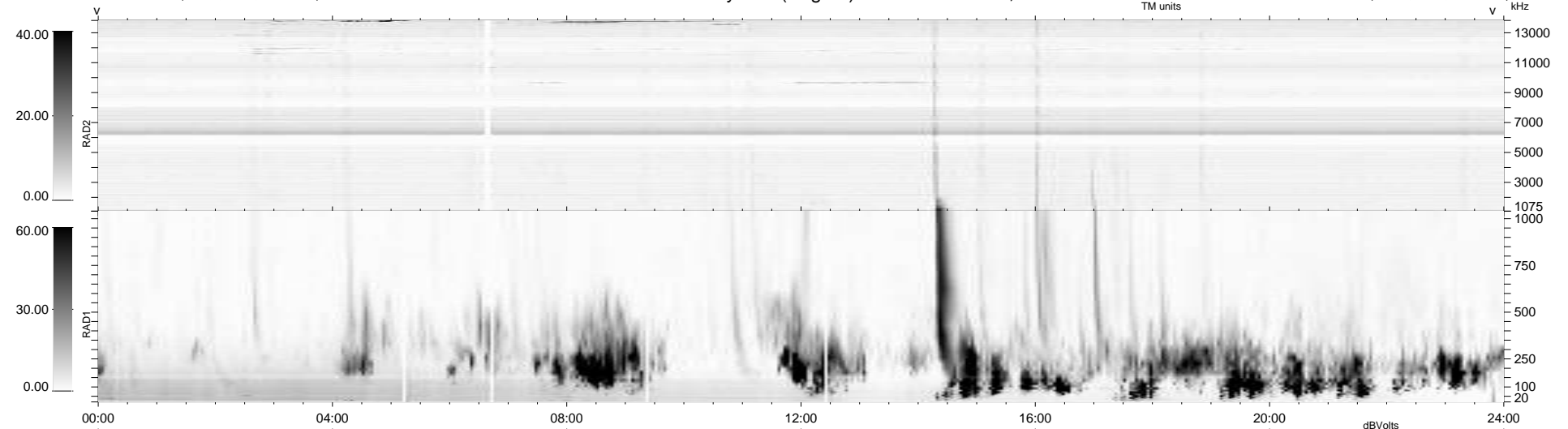
14 bad + 921 good MF/939MF projected (98%) - 4 missing MFs
 Avg interval = 180 secs
 Re = 202.40 (196.29, 48.47, -9.17 GSE)

windlib 2.0b

LZ version = v01

WIND/WAVES Summary Plot (Page 1) for 22-NOV-2020, DOY = 327

DAILY 2020-11-23 12:20:04
 Re = 203.26 (196.34, 51.79, -8.93 GSE)



```

RAD2
Antenna Ey .....
Mode LIN(1) .....
SUM/SEP SEP .....
Toggle OFF .....

RAD1
Antenna Ex .....
Mode LIS(2,4) .....
SUM/SEP SUM .....
Toggle OFF .....

TNR
Antenna ExEy .....
Mode A-32 .....
Sweep ACE .....
  
```