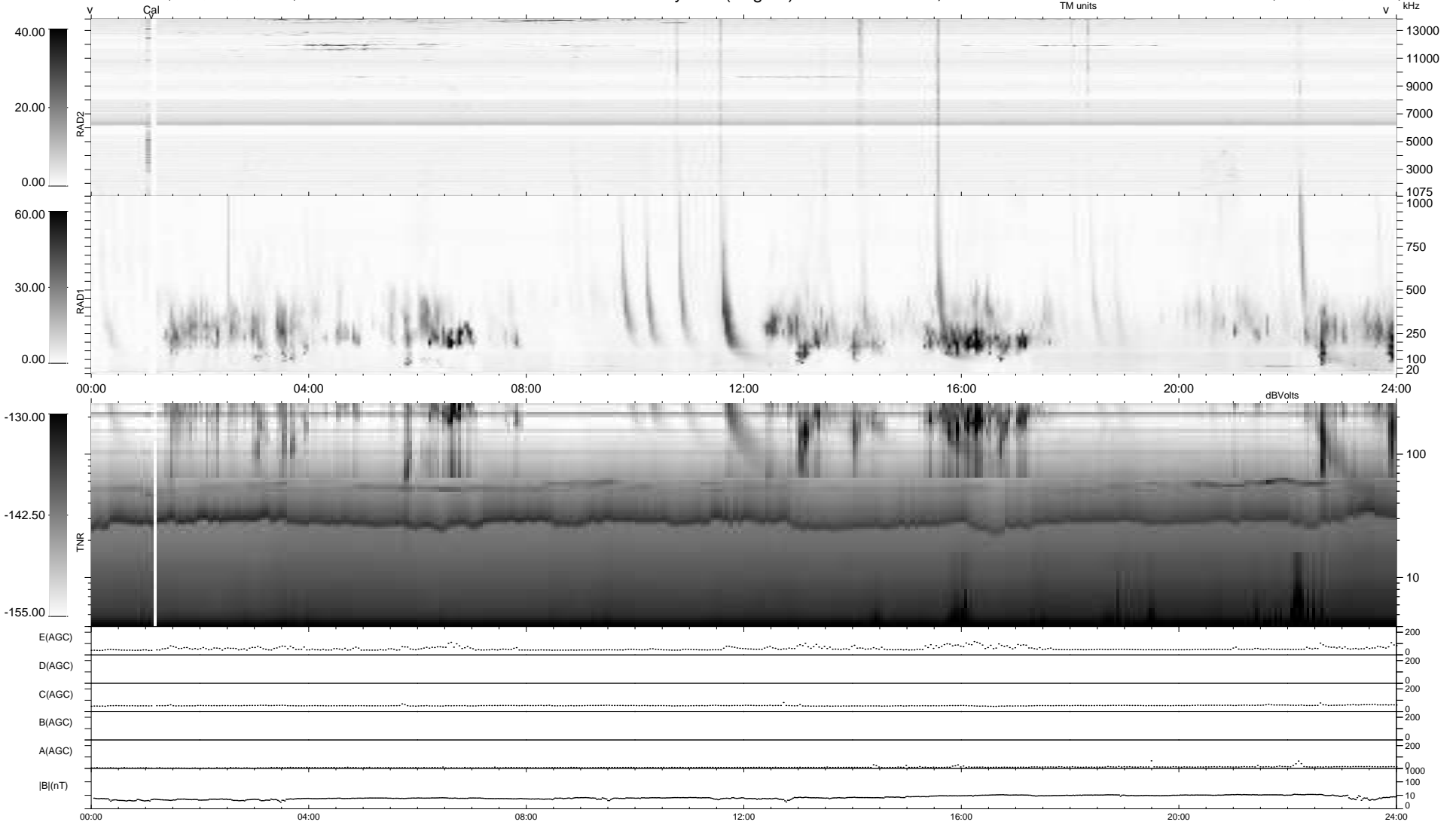


7 bad + 932 good MF/939MF projected (99%) - 0 missing MFs  
 Avg interval = 180 secs  
 Re = -201.59 (196.27, 45.01, -9.39 GSE)

windlib 2.0b LZ version = v01  
 DAILY 2020-11-22 21:20:04  
 Re = 202.39 (196.29, 48.44, -9.17 GSE)

### WIND/WAVES Summary Plot (Page 1) for 21-NOV-2020, DOY = 326



```

RAD2
Antenna Ey .....
Mode LIN(1) .....
SUM/SEP SEP .....
Toggle OFF .....

RAD1
Antenna Ex .....
Mode LIS(2,4) .....
SUM/SEP SUM .....
Toggle OFF .....

TNR
Antenna ExEy .....
Mode A-32 .....
Sweep ACE .....
  
```