

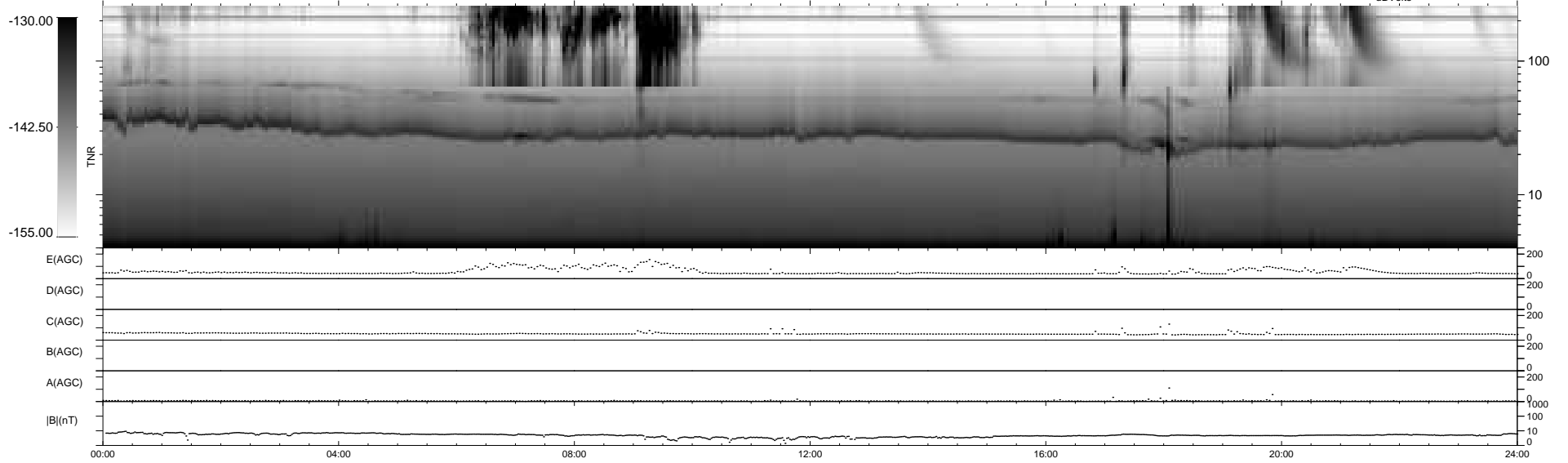
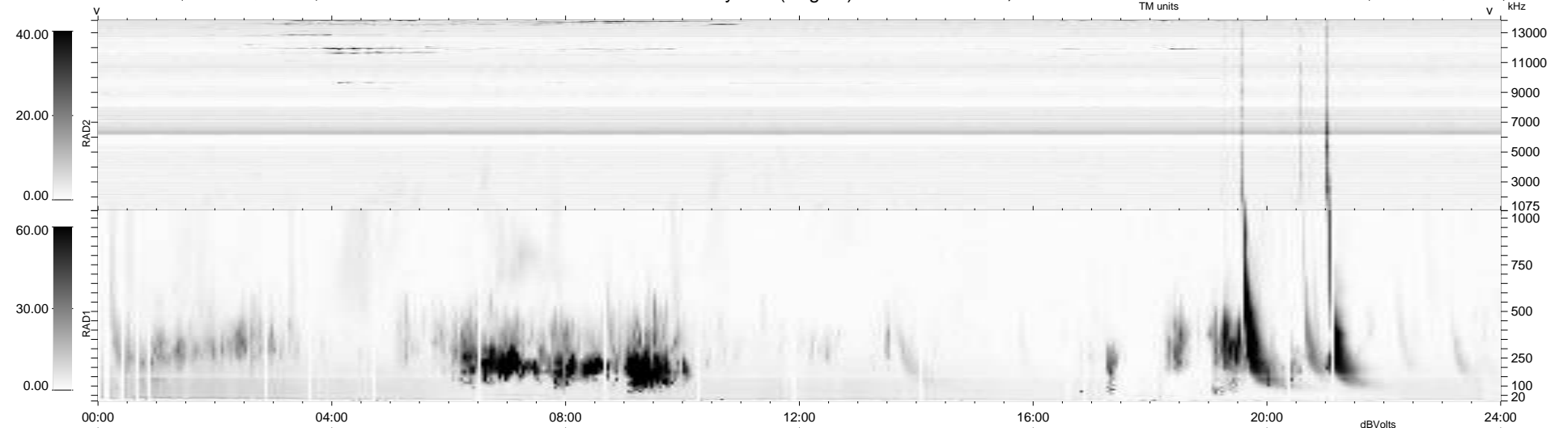
360 bad + 579 good MF/939MF projected (61%) - 0 missing MFs
 Avg interval = 180 secs
 Re = 200.83 (196.27, 41.45, -9.60 GSE)

windlib 2.0b

LZ version = v01

WIND/WAVES Summary Plot (Page 1) for 20-NOV-2020, DOY = 325

DAILY 2020-11-21 20:21:18
 Re = 201.58 (196.27, 44.98, -9.39 GSE)



RAD2
 Antenna Ey
 Mode LIN(1)
 SUM/SEP SEP
 Toggle OFF
 RAD1
 Antenna Ex
 Mode LIS(2,4)
 SUM/SEP SUM
 Toggle OFF
 TNR
 Antenna ExEy
 Mode A-32
 Sweep ACE