

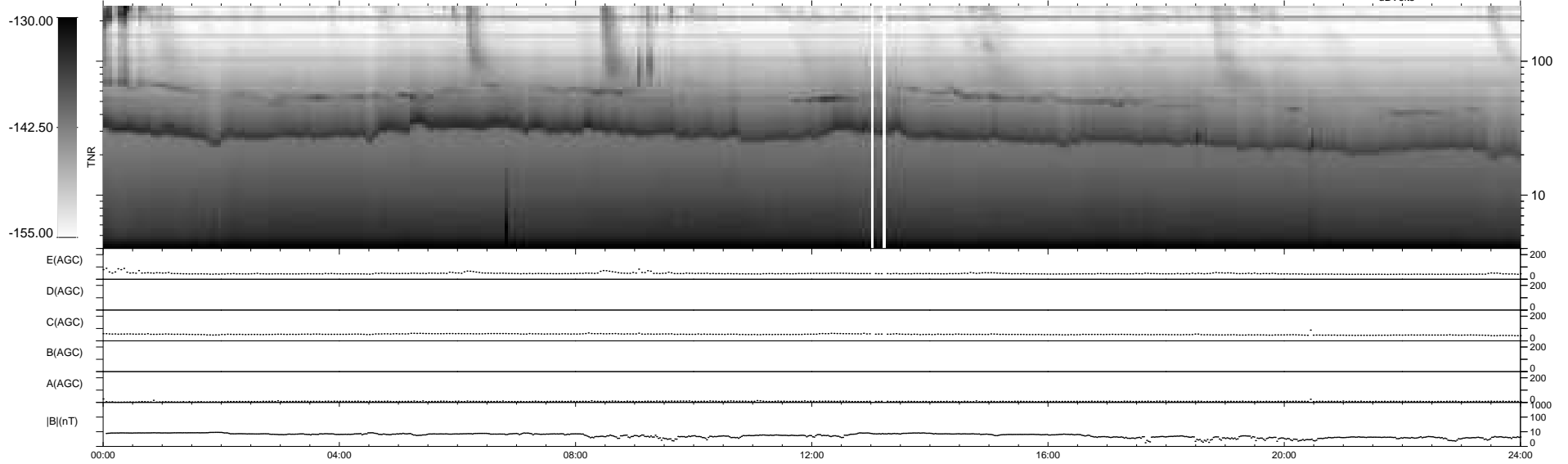
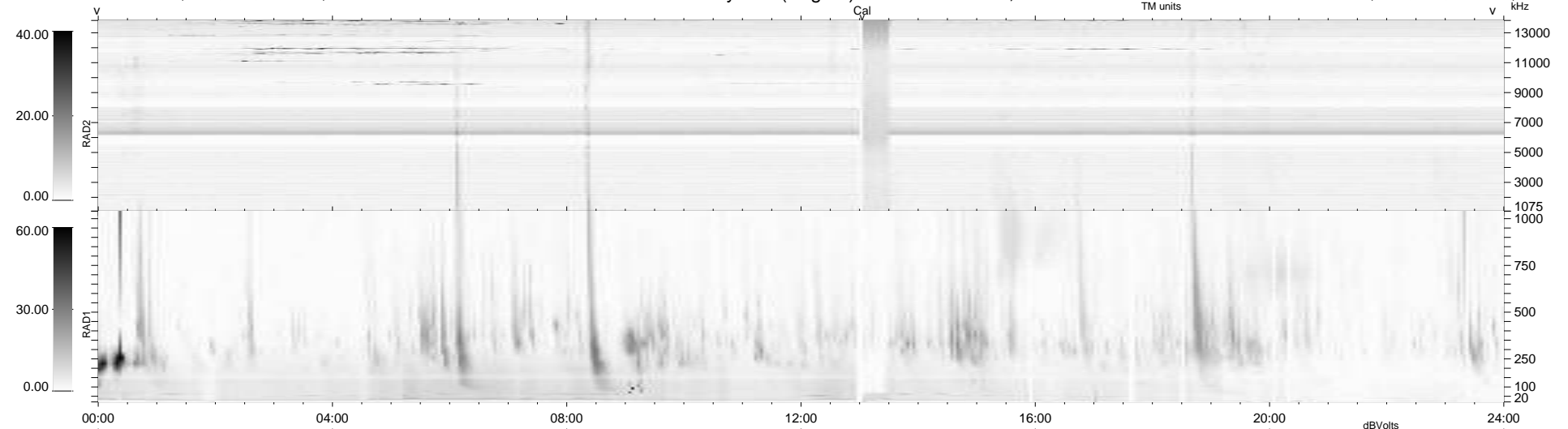
154 bad + 785 good MF/939MF projected (83%) - 0 missing MFs
 Avg interval = 180 secs
 Re = 196.61 (196.05, 10.46, -10.59 GSE)

windlib 2.0b

LZ version = v01

WIND/WAVES Summary Plot (Page 1) for 12-NOV-2020, DOY = 317

DAILY 2020-11-14 21:20:14
 Re = 196.95 (196.14, 14.41, -10.55 GSE)



```

RAD2
Antenna Ey ..... LIN(1) ..... LIN(1)
Mode LIN(1) ..... SEP
SUM/SEP SEP ..... SEP
Toggle OFF .....

RAD1
Antenna Ex ..... US(2.4) .....
Mode LIS(2.4) .....
SUM/SEP SUM .....
Toggle OFF .....

TNR
Antenna ExEy .....
Mode A-32 .....
Sweep ACE .....
  
```