

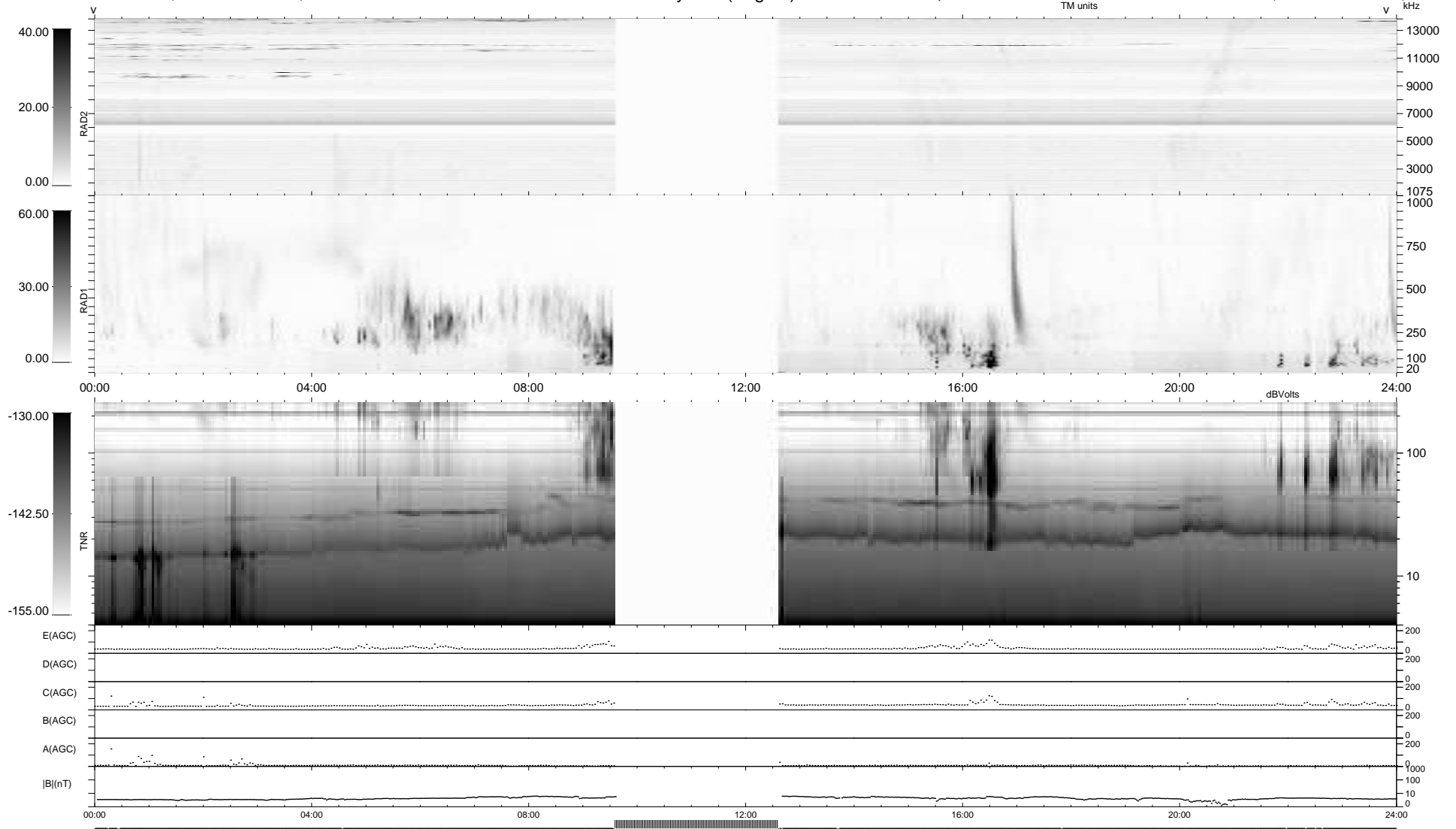
14 bad + 807 good MF/939MF projected (85%) - 118 missing MFs
 Avg interval = 180 secs
 Re = 201.20 (196.65, -41.44, -9.64 GSE)

windlib 2.0b

LZ version = v01

WIND/WAVES Summary Plot (Page 1) for 29-OCT-2020, DOY = 303

DAILY 2020-10-31 14:20:13
 Re = 200.25 (196.35, -38.08, -9.83 GSE)



RAD2
 Antenna Ey
 Mode LIN(1)
 SUM/SEP SEP
 Toggle OFF

RAD1
 Antenna Ex
 Mode LIS(2,4)
 SUM/SEP SUM
 Toggle OFF

TNR
 Antenna ExEy
 Mode A-32
 Sweep ACE