

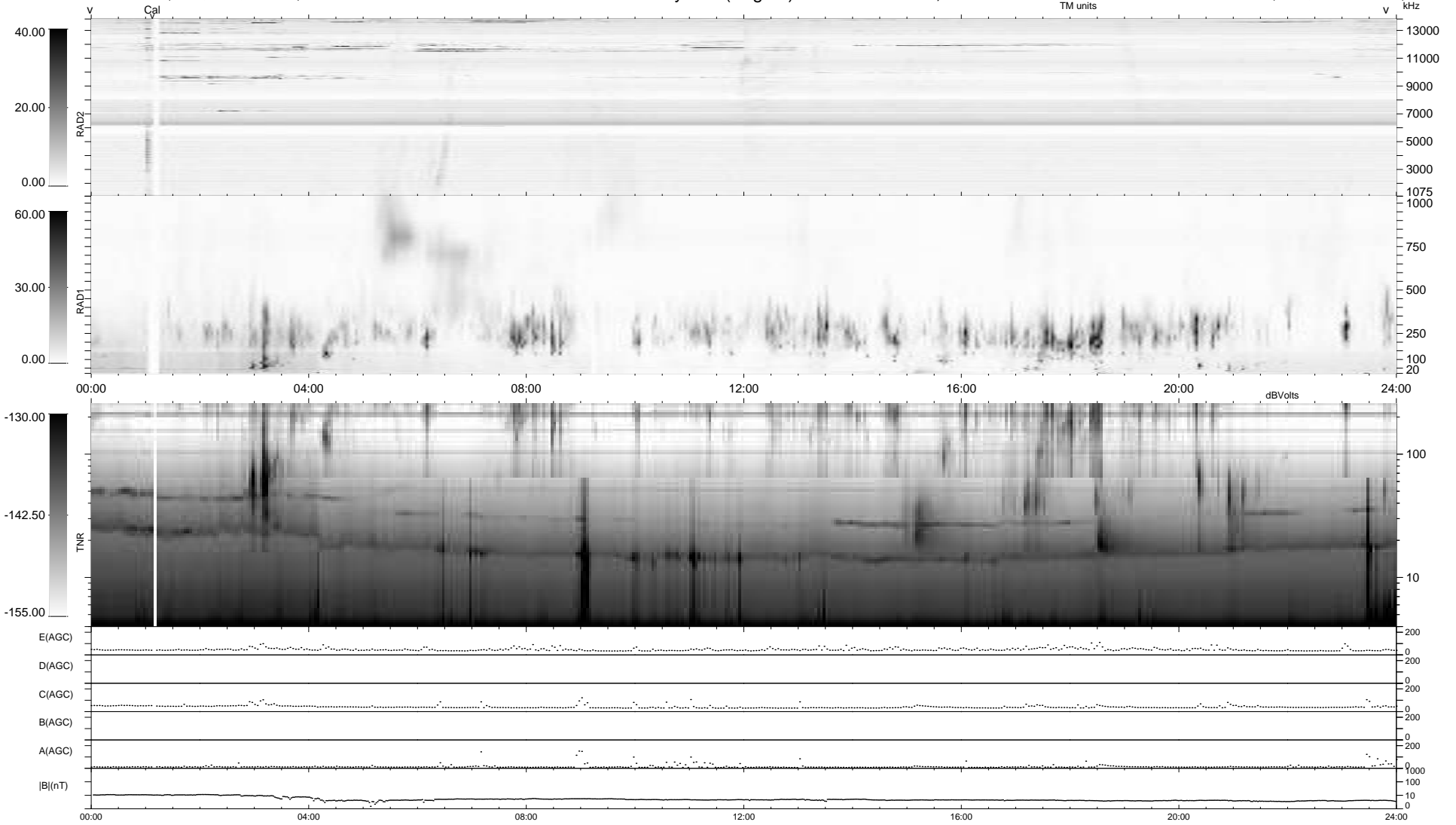
10 bad + 930 good MF/940MF projected (98%) - 0 missing MFs  
 Avg interval = 180 secs  
 Re = -207.18 (198.84, -57.58, -8.40 GSE)

windlib 2.0b

LZ version = v01

### WIND/WAVES Summary Plot (Page 1) for 24-OCT-2020, DOY = 298

DAILY 2020-10-26 14:20:15  
 Re = 205.86 (198.33, -54.48, -8.68 GSE)



RAD2  
 Antenna Ey .....  
 Mode LIN(1) .....  
 SUM/SEP SEP .....  
 Toggle OFF .....  
 RAD1  
 Antenna Ex .....  
 Mode LIS(2,4) .....  
 SUM/SEP SUM .....  
 Toggle OFF .....  
 TNR  
 Antenna ExEy .....  
 Mode A-32 .....  
 Sweep ACE .....