

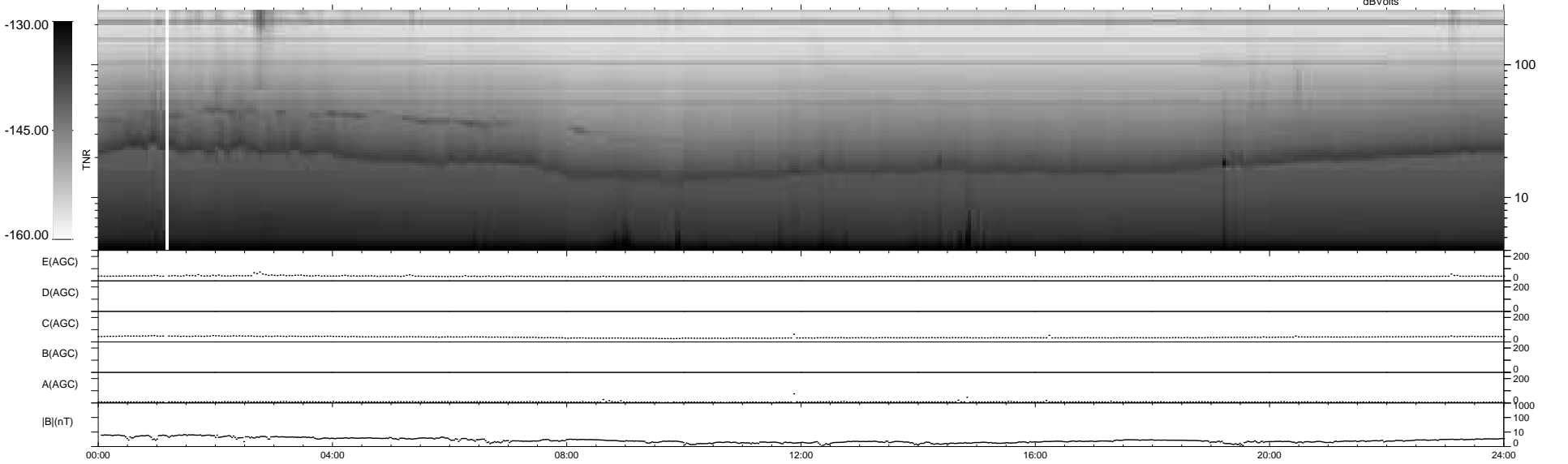
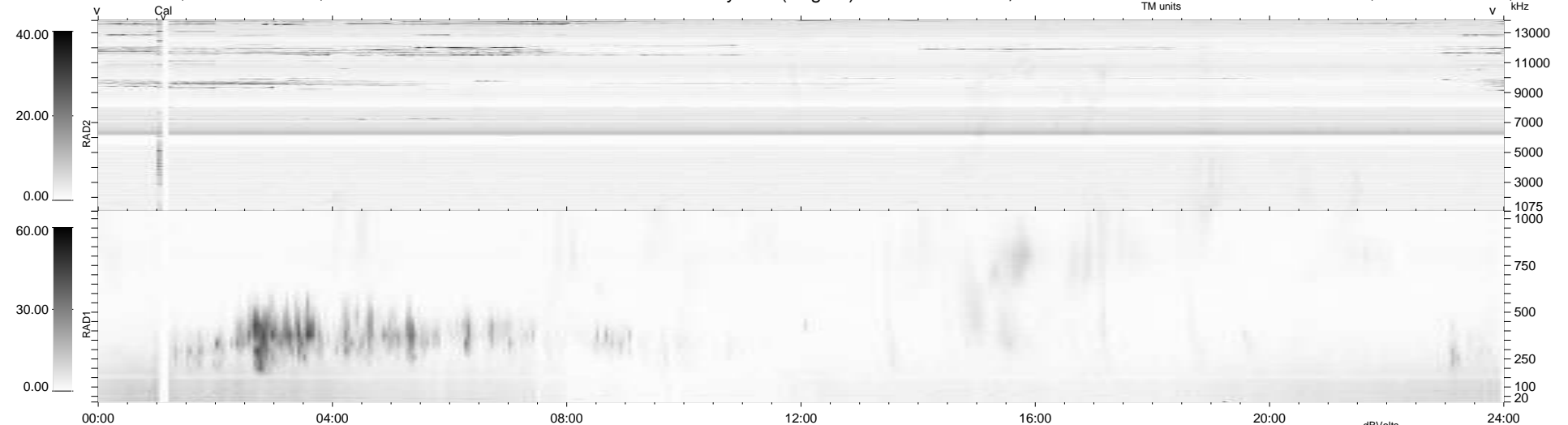
12 bad + 927 good MF/939MF projected (98%) - 0 missing MFs
Avg interval = 180 secs
Re = 212.98 (201.20, -69.47, -7.13 GSE)

windlib 2.0b

LZ version = v01

WIND/WAVES Summary Plot (Page 1) for 20-OCT-2020, DOY = 294

DAILY 2020-10-22 13:20:06
Re = 211.49 (200.59, -66.62, -7.47 GSE)



RAD2
Antenna Ey
Mode LIN(1)
SUM/SEP SEP
Toggle OFF

RAD1
Antenna Ex
Mode LIS(2,4)
SUM/SEP SUM
Toggle OFF

TNR
Antenna ExEy
Mode A-32
Sweep ACE