

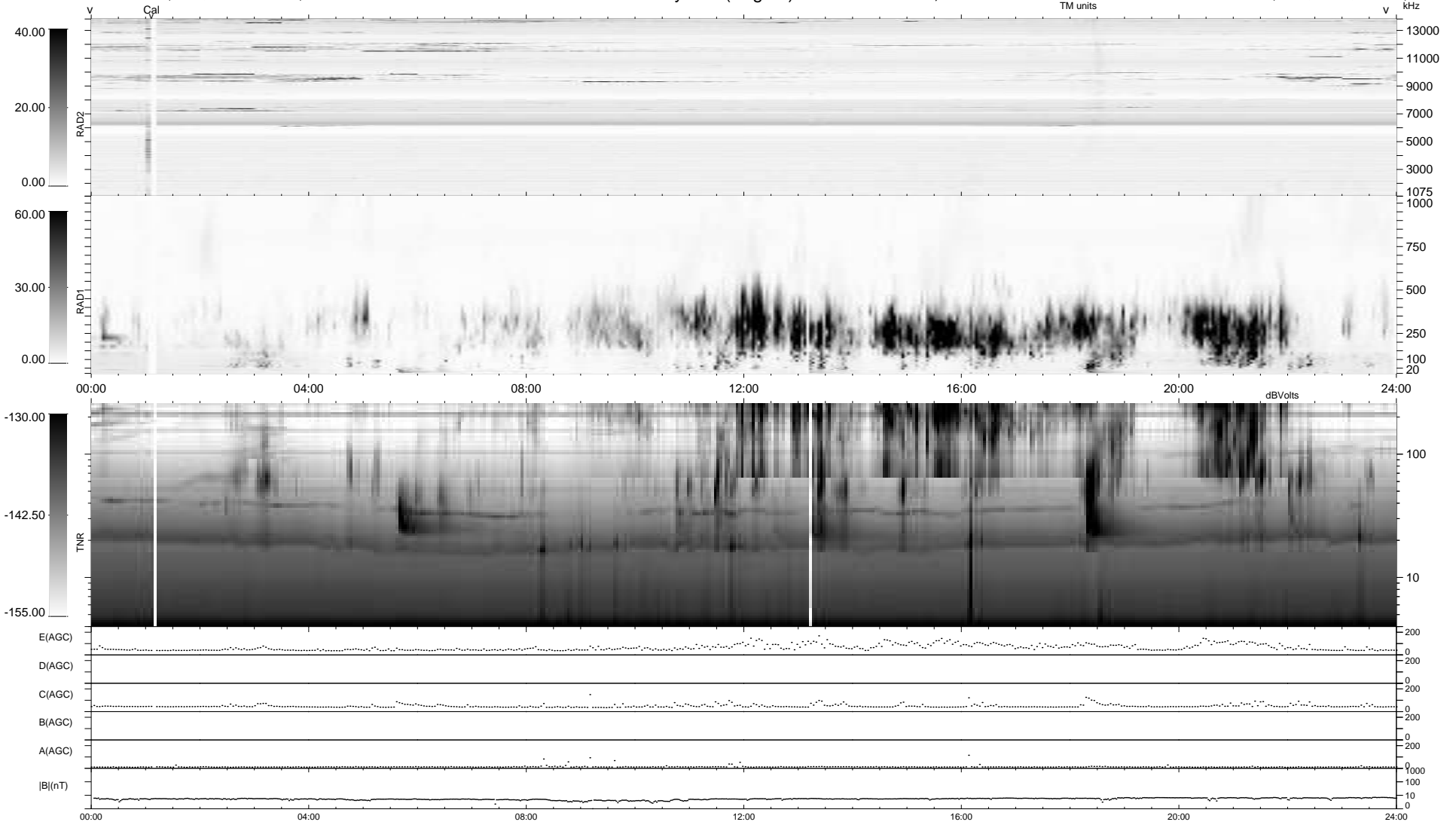
8 bad + 931 good MF/939MF projected (99%) - 0 missing MFs
 Avg interval = 180 secs
 Re = -242.07 (219.69, -101.64, 1.52 GSE)

windlib 2.0b

LZ version = v01

WIND/WAVES Summary Plot (Page 1) for 28-SEP-2020, DOY = 272

DAILY 2020-09-29 17:20:14
 Re = 240.86 (218.40, -101.56, 1.10 GSE)



```

RAD2
Antenna Ey .....
Mode LIN(1) .....
SUM/SEP SEP .....
Toggle OFF .....

RAD1
Antenna Ex .....
Mode LIS(2,4) .....
SUM/SEP SUM .....
Toggle OFF .....

TNR
Antenna ExEy .....
Mode A-32 .....
Sweep ACE .....
  
```