

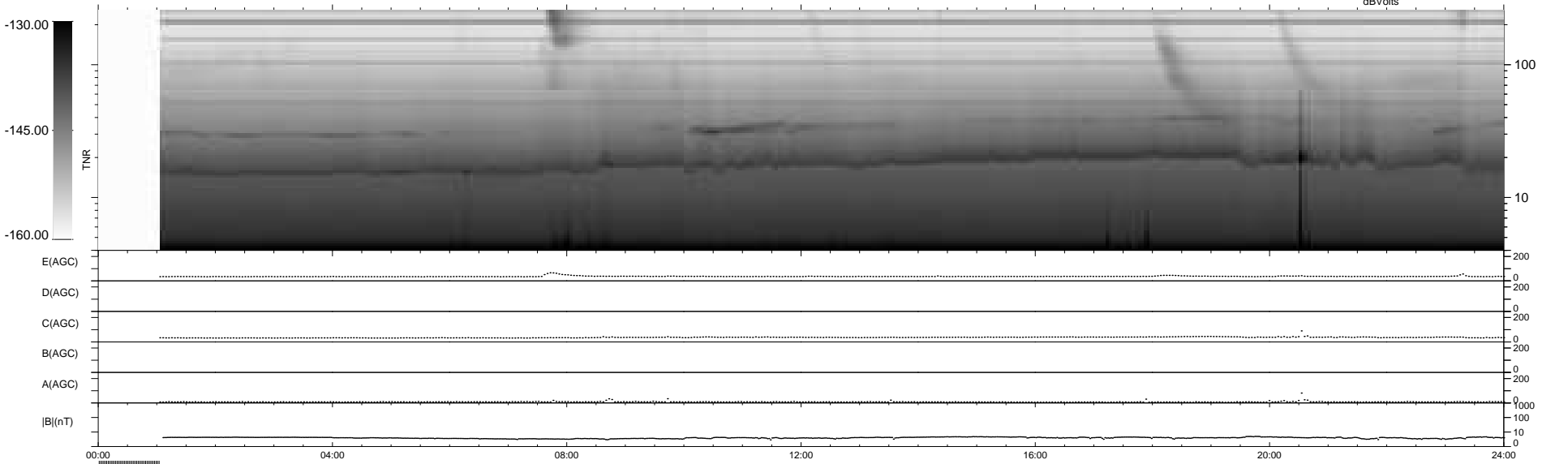
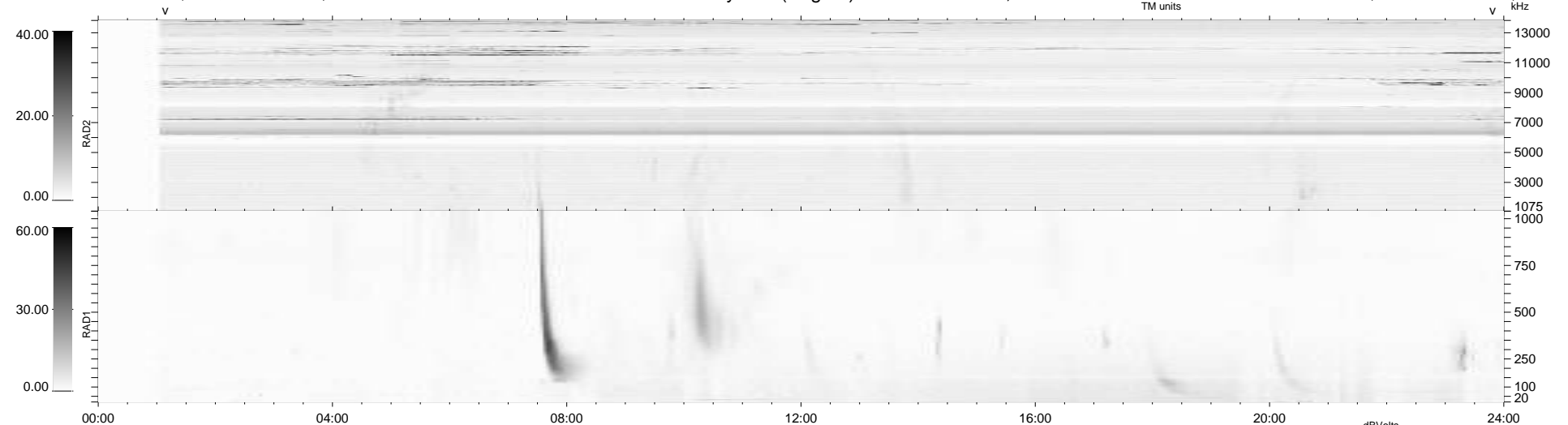
12 bad + 886 good MF/939MF projected (94%) - 41 missing MFs
Avg interval = 180 secs
Re = 260.61 (250.85, -69.85, 10.58 GSE)

windlib 2.0b

LZ version = v01

WIND/WAVES Summary Plot (Page 1) for 03-SEP-2020, DOY = 247

DAILY 2020-09-04 19:20:14
Re = 260.32 (249.84, -72.36, 10.39 GSE)



RAD2 Antenna Mode SUM/SEP Toggle
RAD1 Antenna Mode SUM/SEP Toggle
TNR Antenna Mode Sweep