

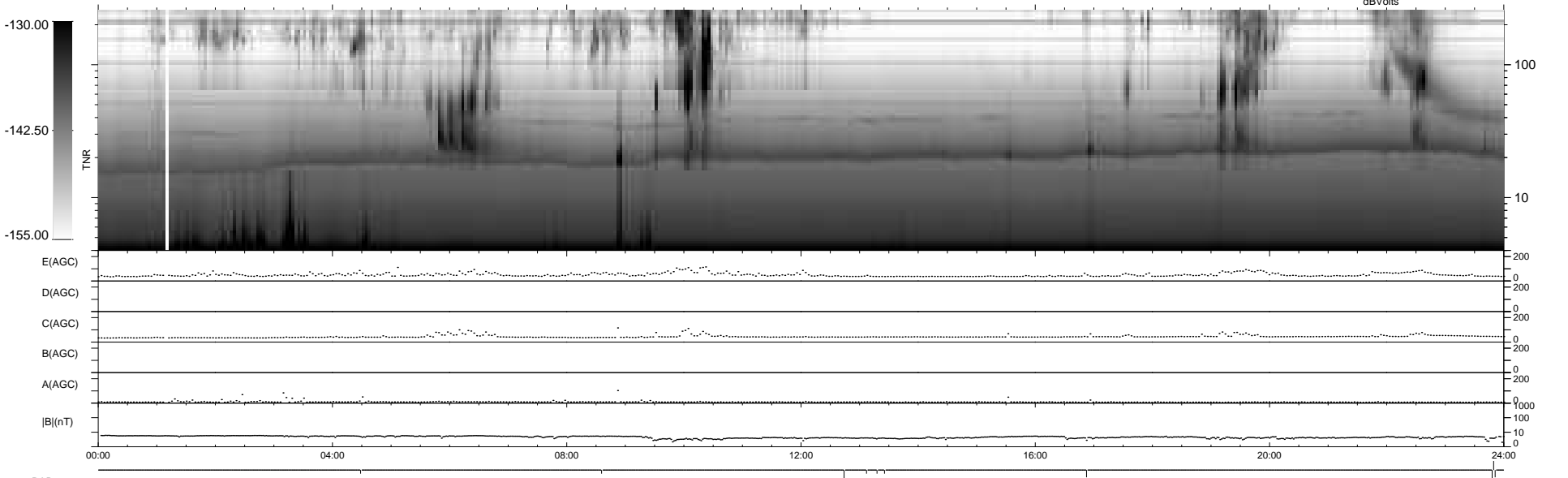
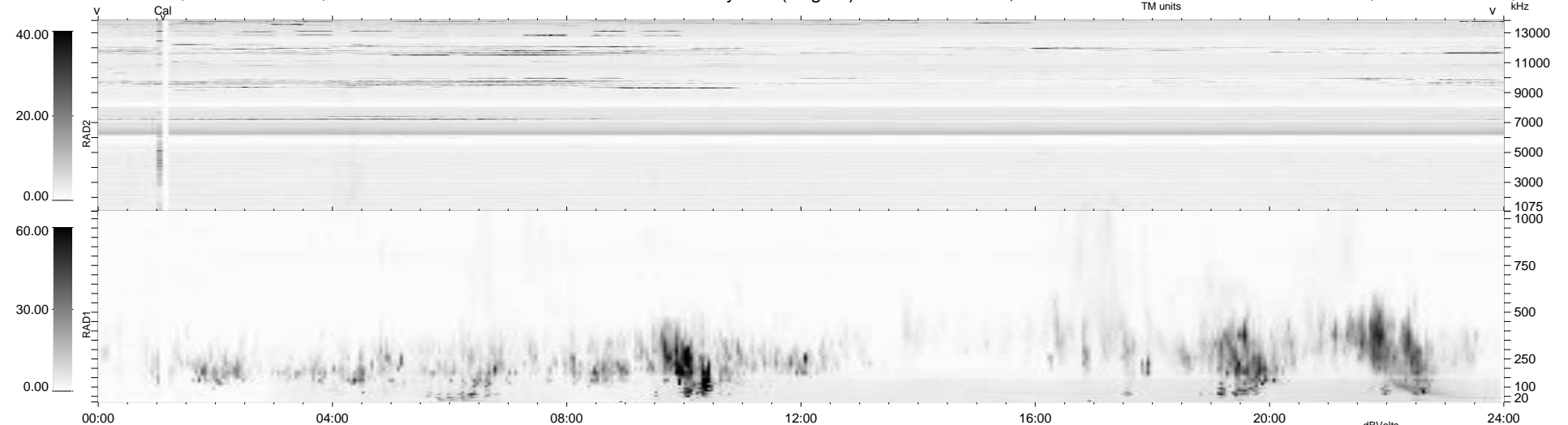
9 bad + 929 good MF/939MF projected (98%) - 1 missing MF
 Avg interval = 180 secs
 Re = 262.24 (256.09, -55.35, 10.93 GSE)

windlib 2.0b

LZ version = v01

WIND/WAVES Summary Plot (Page 1) for 29-AUG-2020, DOY = 242

DAILY 2020-08-30 18:20:05
 Re = 261.90 (255.09, -58.32, 10.97 GSE)



```

RAD2
Antenna Ey .....
Mode LIN(1) .....
SUM/SEP SEP .....
Toggle OFF .....

RAD1
Antenna Ex .....
Mode LIS(2,4) .....
SUM/SEP SUM .....
Toggle OFF .....

TNR
Antenna ExEy .....
Mode A-32 .....
Sweep ACE .....
  
```