

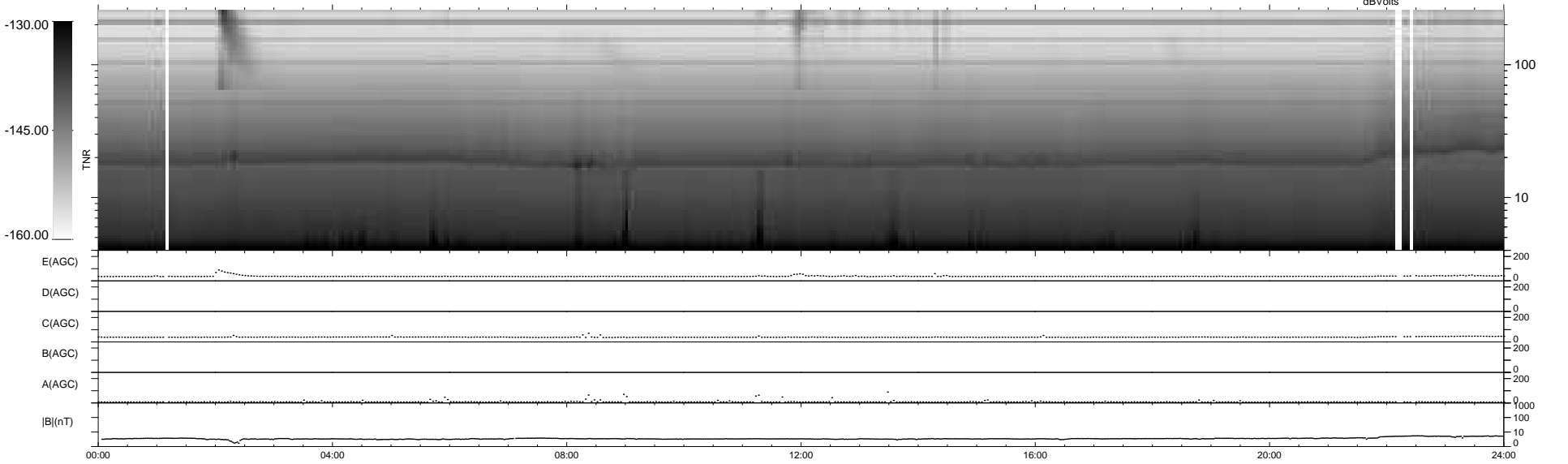
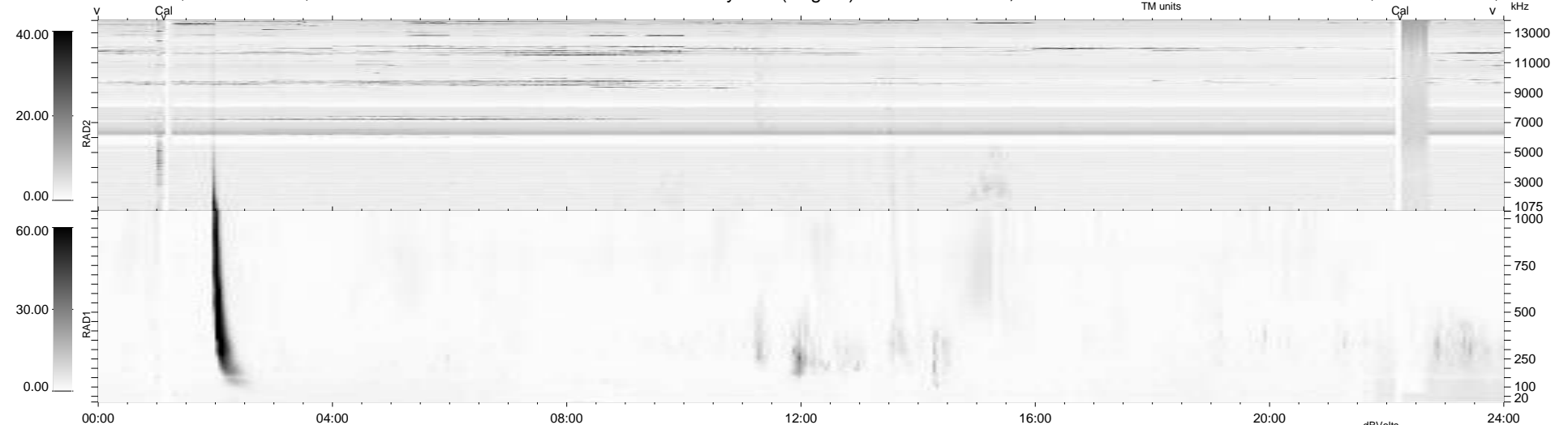
13 bad + 926 good MF/939MF projected (98%) - 0 missing MFs  
 Avg interval = 180 secs  
 Re = 264.58 (264.28, 9.77, 7.93 GSE)

windlib 2.0b

LZ version = v01

### WIND/WAVES Summary Plot (Page 1) for 09-AUG-2020, DOY = 222

DAILY 2020-08-10 13:21:56  
 Re = 264.70 (264.50, 6.27, 8.17 GSE)



```

RAD2
Antenna Ey ..... LIN(1) ..... UN(1) .....
Mode LIN(1) ..... SEP .....
SUM/SEP SEP .....
Toggle OFF .....

RAD1
Antenna Ex ..... LIS(2,4) ..... LIS(2,4) .....
Mode LIS(2,4) .....
SUM/SEP SUM .....
Toggle OFF .....

TNR
Antenna ExEy .....
Mode A-32 .....
Sweep ACE .....
  
```