

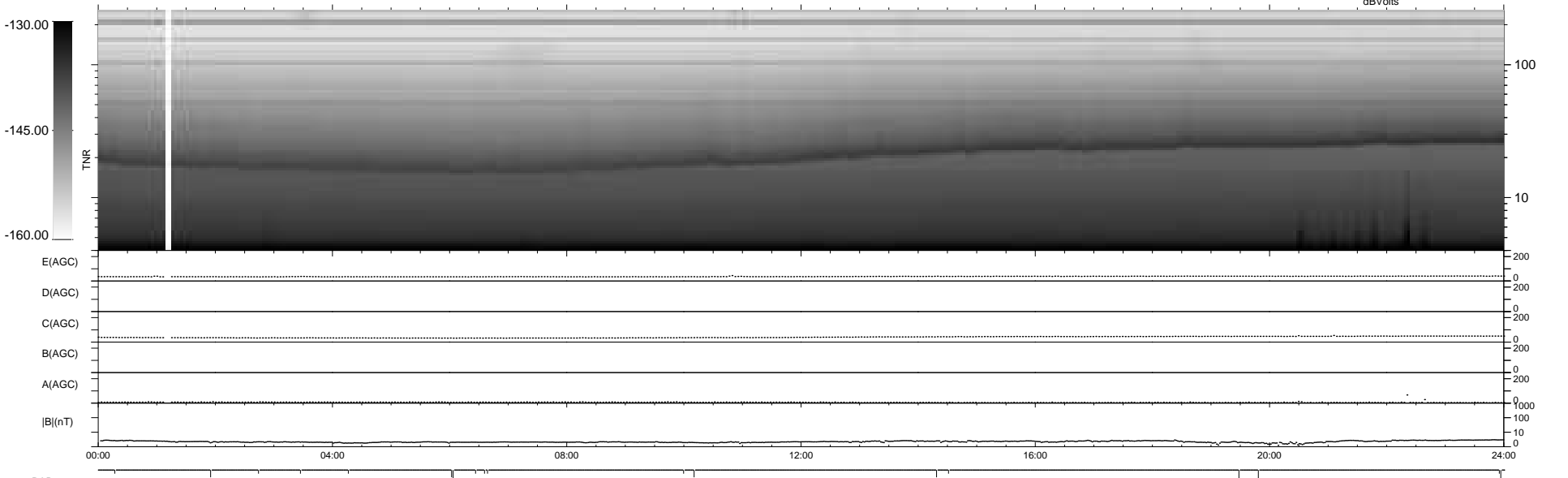
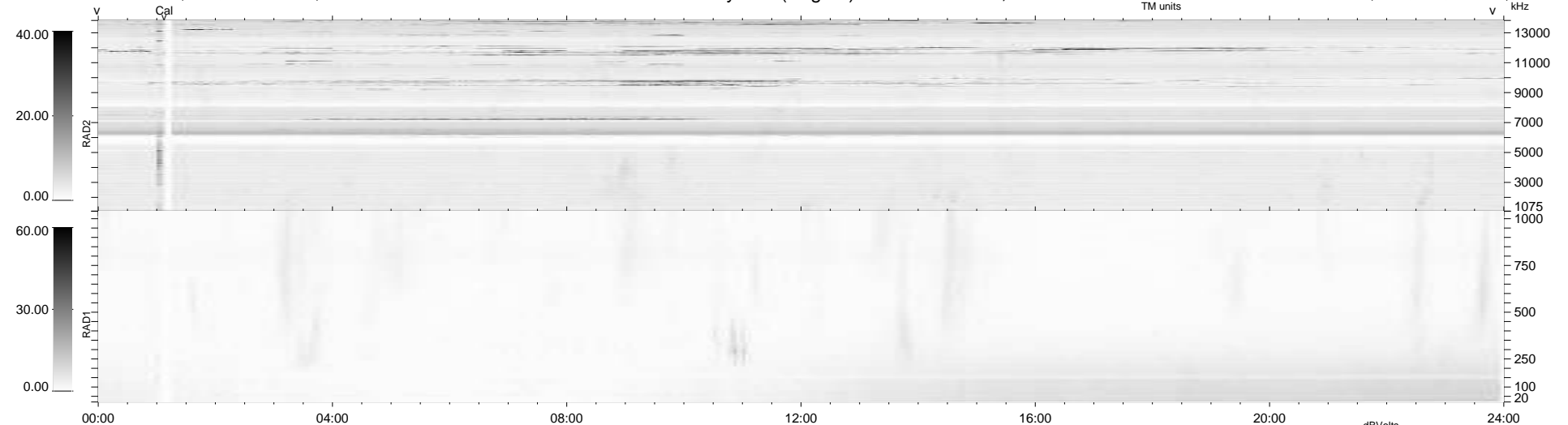
18 bad + 922 good MF/940MF projected (98%) - 0 missing MFs  
 Avg interval = 180 secs  
 Re = 256.32 (238.10, 94.89, -1.98 GSE)

windlib 2.0b

LZ version = v01

### WIND/WAVES Summary Plot (Page 1) for 08-JUL-2020, DOY = 190

DAILY 2020-07-10 12:20:07  
 Re = 256.98 (239.41, 93.39, -1.67 GSE)



```

RAD2
Antenna Ey .....
Mode LIN(1) .....
SUM/SEP SEP .....
Toggle OFF .....

RAD1
Antenna Ex .....
Mode LIS(2/4) .....
SUM/SEP SUM .....
Toggle OFF .....

TNR
Antenna ExEy .....
Mode A-32 .....
Sweep ACE .....
  
```