

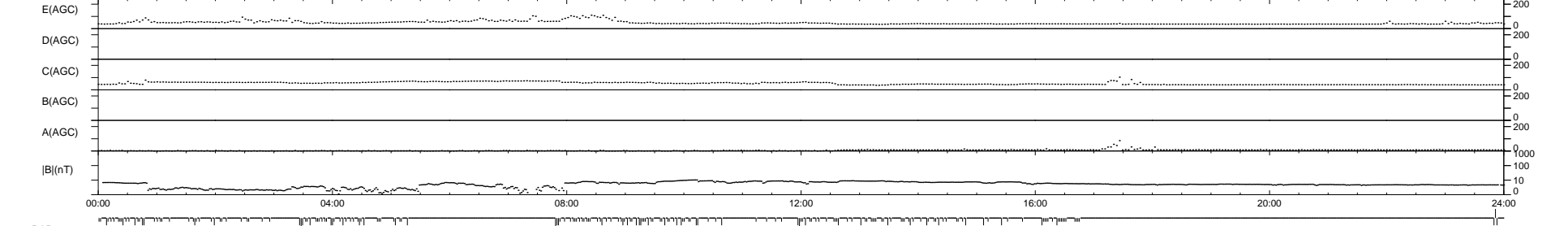
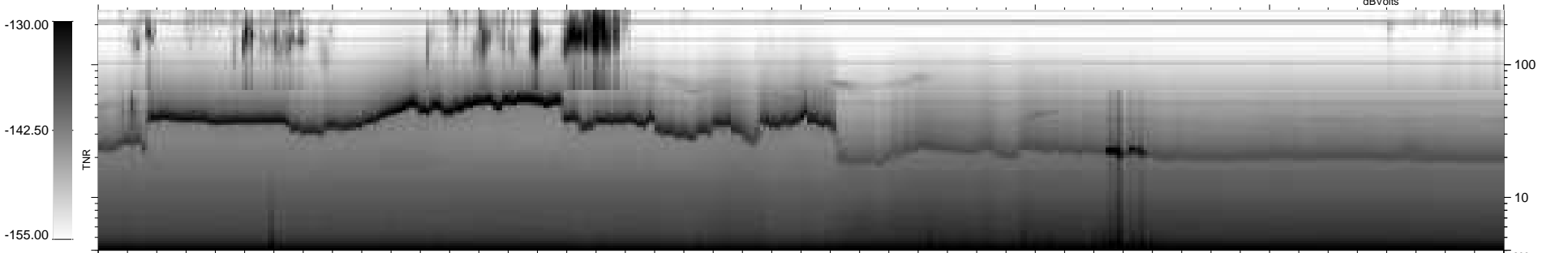
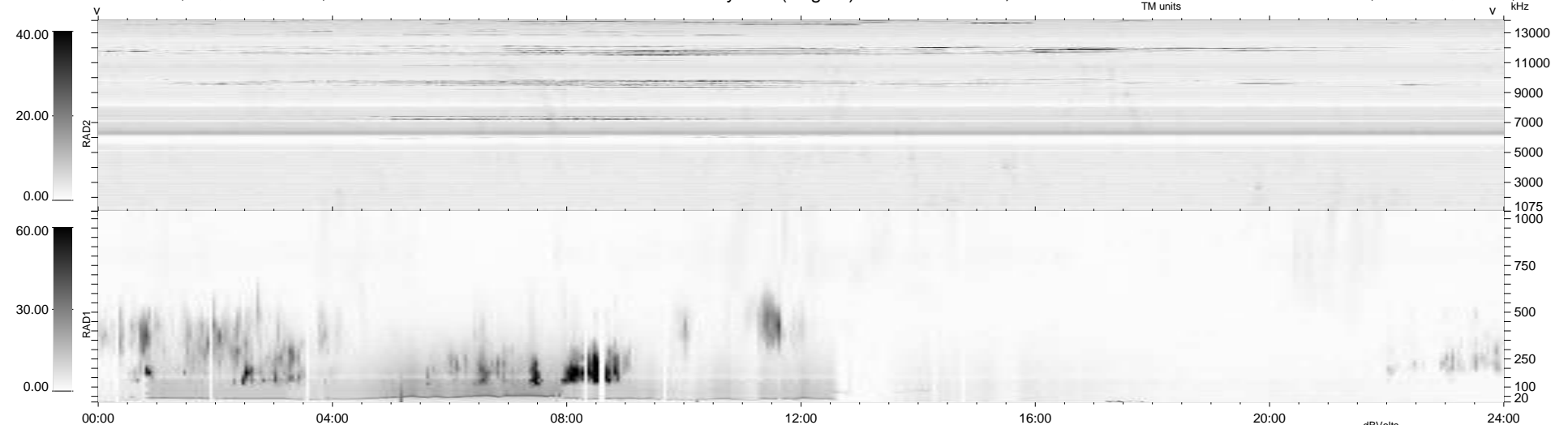
195 bad + 743 good MF/939MF projected (79%) - 1 missing MF
 Avg interval = 180 secs
 Re = 248.41 (225.61, 103.83, -5.24 GSE)

windlib 2.0b

LZ version = v01

WIND/WAVES Summary Plot (Page 1) for 27-JUN-2020, DOY = 179

DAILY 2020-06-29 00:20:15
 Re = 249.27 (226.61, 103.73, -4.96 GSE)



RAD2
 Antenna Ey
 Mode LIN(1)
 SUM/SEP SEP
 Toggle OFF

RAD1
 Antenna Ex
 Mode LIS(2,4)
 SUM/SEP SUM
 Toggle OFF

TNR
 Antenna ExEy
 Mode A-32
 Sweep ACE