

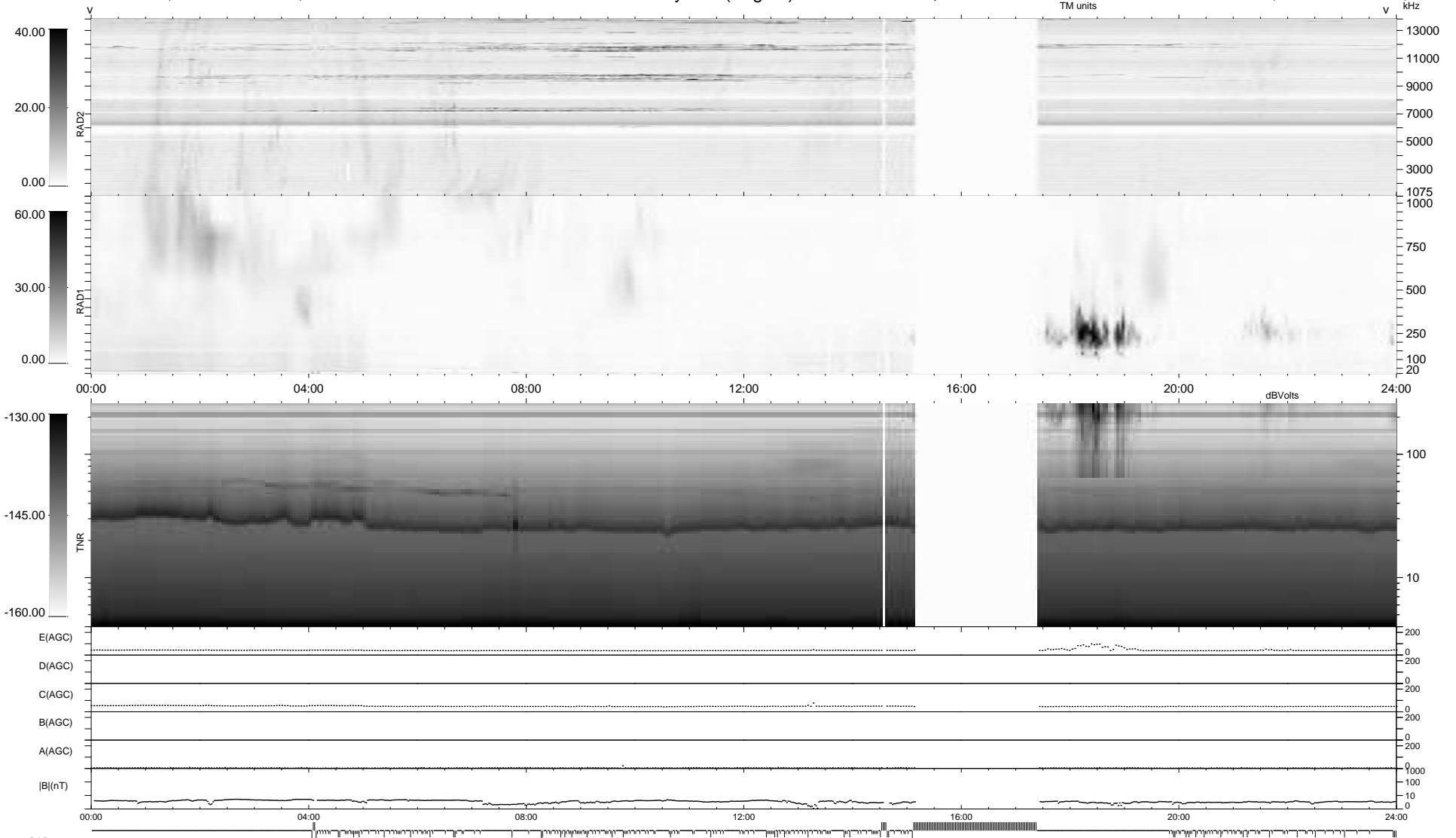
218 bad + 626 good MF/939MF projected (66%) - 95 missing MFs
 Avg interval = 180 secs
 Re = 246.50 (223.61, 103.60, -5.51 GSE)

windlib 2.0b

LZ version = v02

WIND/WAVES Summary Plot (Page 1) for 25-JUN-2020, DOY = 177

DAILY 2020-06-28 13:20:04
 Re = 247.48 (224.60, 103.79, -5.39 GSE)



RAD2
 Antenna Ey
 Mode LIN(1)
 SUM/SEP SEP
 Toggle OFF
 RAD1
 Antenna Ex
 Mode LIS(2,4)
 SUM/SEP SUM
 Toggle OFF
 TNR
 Antenna ExEy
 Mode A-32
 Sweep ACE