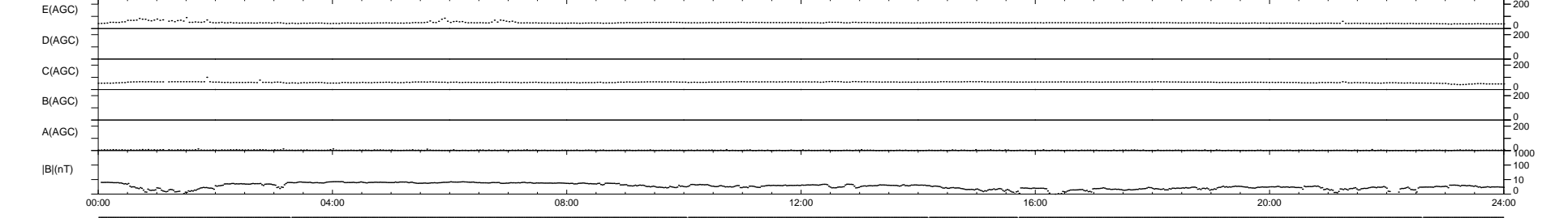
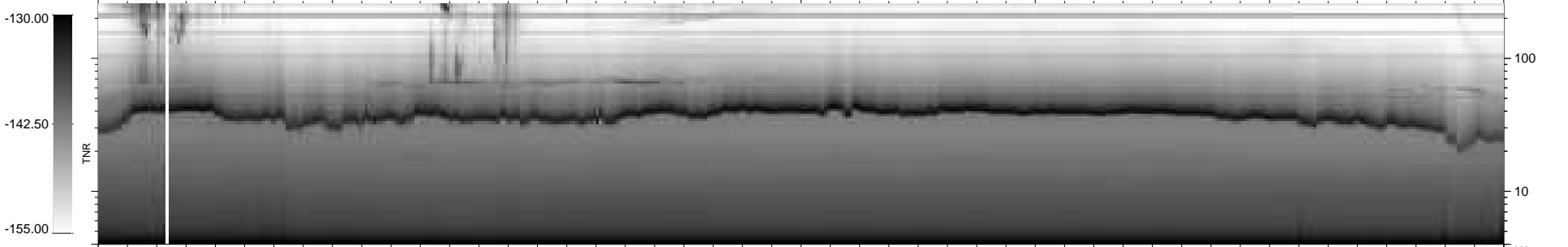
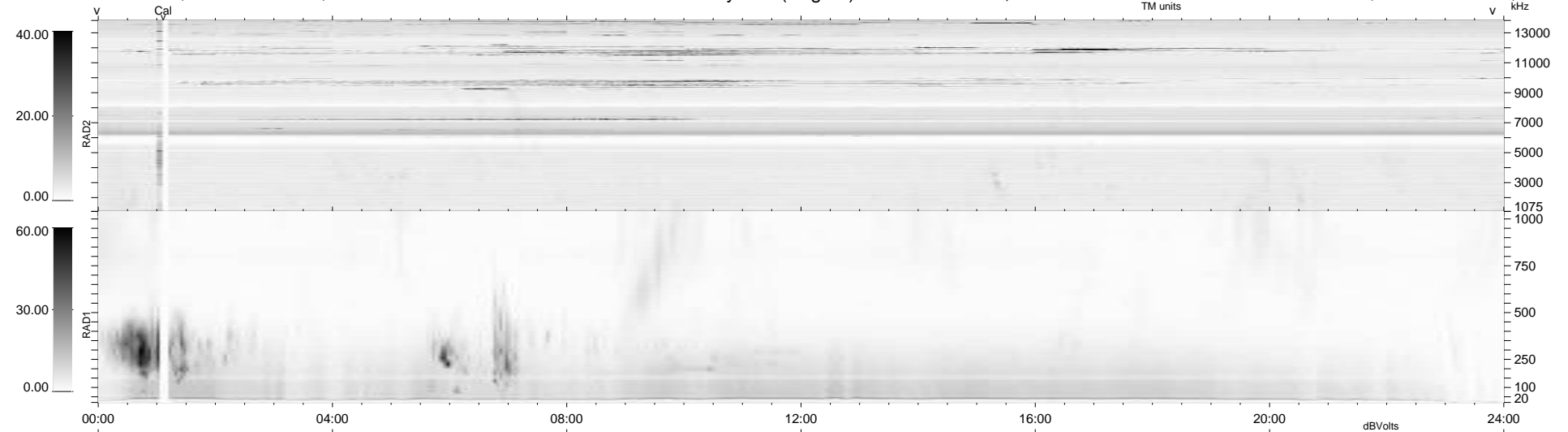


5 bad + 934 good MF/939MF projected (99%) - 0 missing MFs
 Avg interval = 180 secs
 Re = -240.63 (218.50, 100.62, -6.07 GSE)

windlib 2.0b LZ version = v01
 DAILY 2020-06-21 23:20:04
 Re = 241.91 (219.53, 101.46, -5.97 GSE)

WIND/WAVES Summary Plot (Page 1) for 20-JUN-2020, DOY = 172



```

RAD2
Antenna Ey .....
Mode LIN(1) .....
SUM/SEP SEP .....
Toggle OFF .....

RAD1
Antenna Ex .....
Mode LIS(2,4) .....
SUM/SEP SUM .....
Toggle OFF .....

TNR
Antenna ExEy .....
Mode A-32 .....
Sweep ACE .....
  
```