

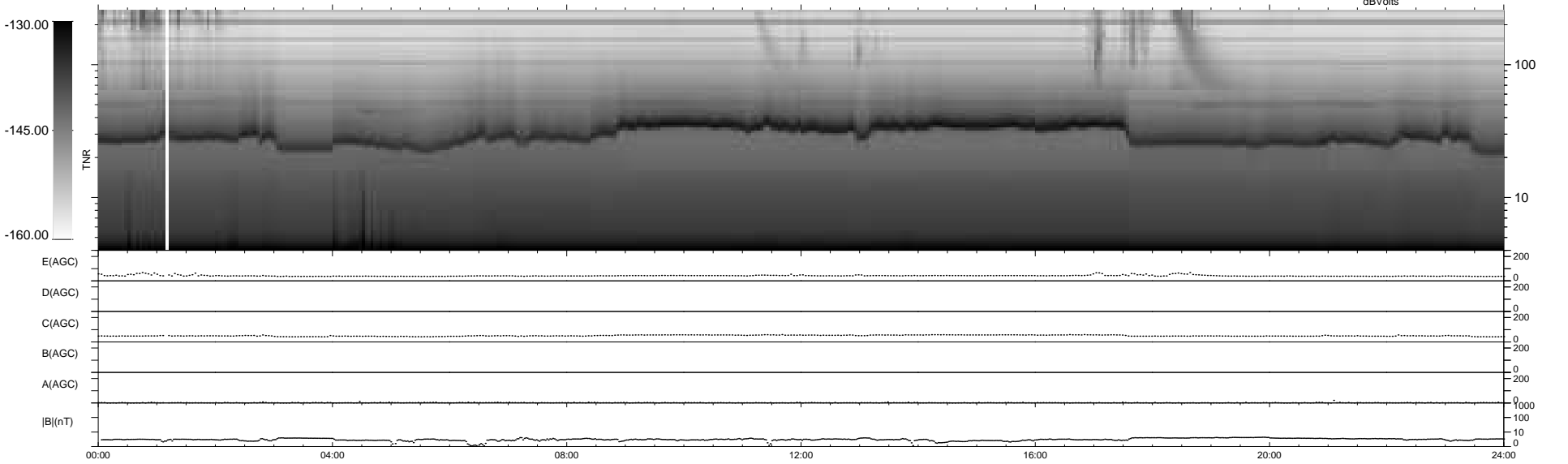
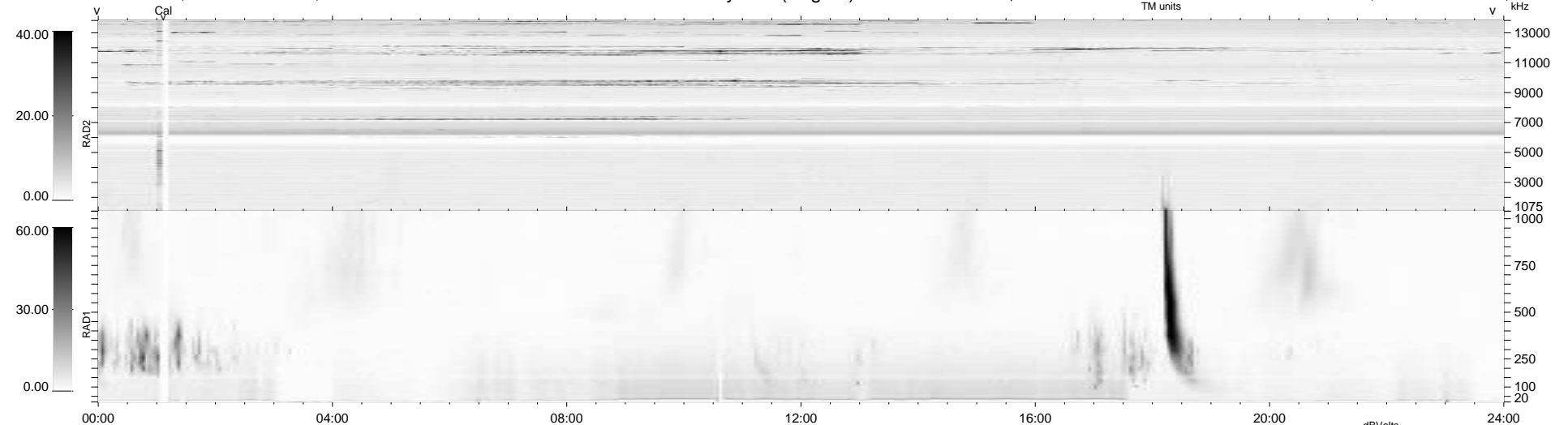
19 bad + 920 good MF/939MF projected (97%) - 0 missing MFs  
 Avg interval = 180 secs  
 Re = 209.49 (203.03, 51.33, -5.66 GSE)

windlib 2.0b

LZ version = v02

### WIND/WAVES Summary Plot (Page 1) for 27-MAY-2020, DOY = 148

DAILY 2020-06-17 22:25:41  
 Re = 210.46 (203.18, 54.58, -5.76 GSE)



```

RAD2
Antenna Ey .....
Mode LIN(1) .....
SUM/SEP SEP .....
Toggle OFF .....

RAD1
Antenna Ex .....
Mode LIS(2,4) .....
SUM/SEP SUM .....
Toggle OFF .....

TNR
Antenna ExEy .....
Mode A-32 .....
Sweep ACE .....
  
```