

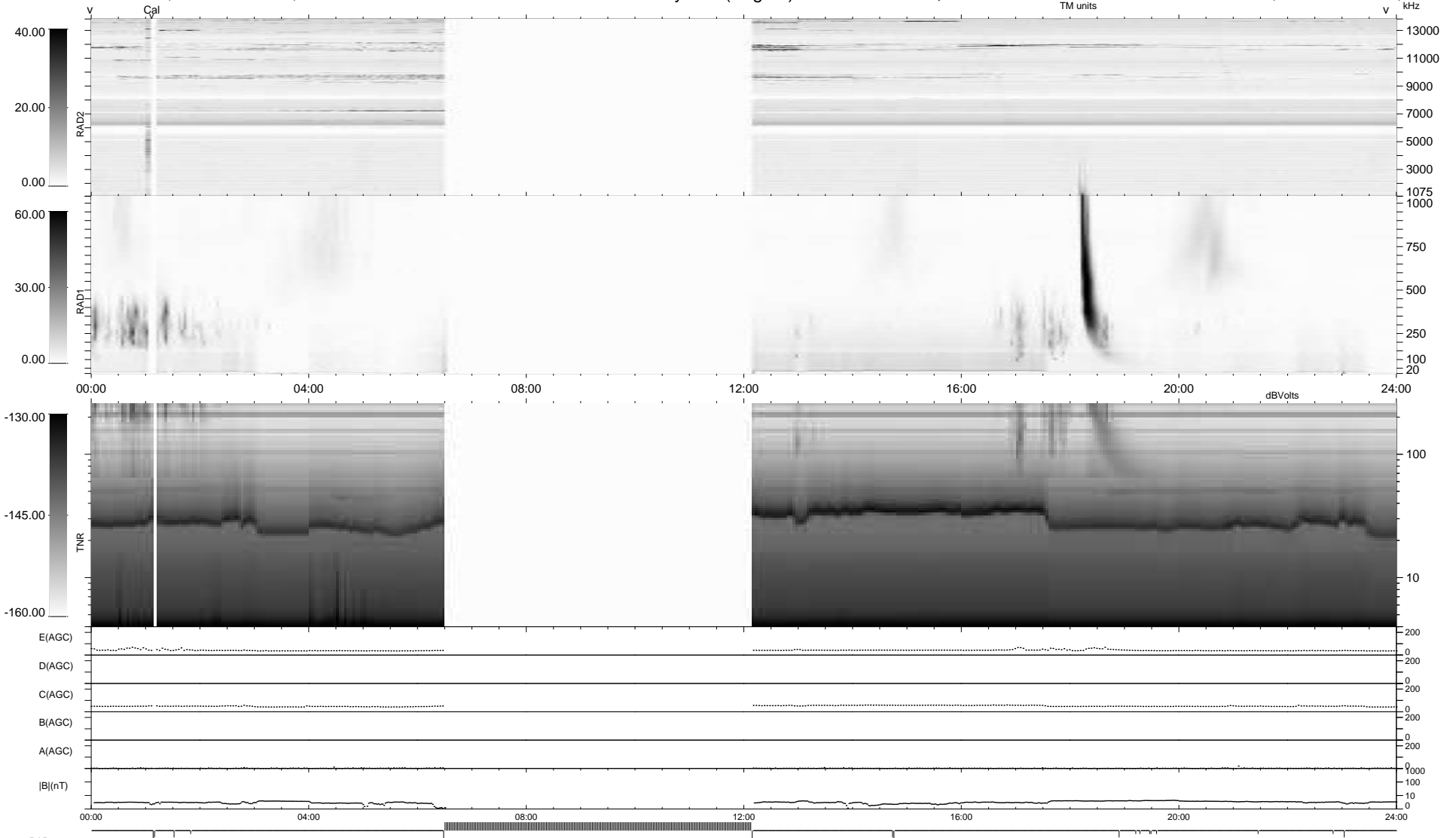
17 bad + 701 good MF/939MF projected (74%) - 221 missing MFs
 Avg interval = 180 secs
 Re = - 209.49 (203.03, 51.33, -5.66 GSE)

windlib 2.0b

LZ version = v01

WIND/WAVES Summary Plot (Page 1) for 27-MAY-2020, DOY = 148

DAILY 2020-05-28 11:20:44
 Re = 210.46 (203.18, 54.58, -5.76 GSE)



```

RAD2
Antenna  Ey .....
Mode     LIN(1) .....
SUM/SEP  SEP .....
Toggle   OFF .....

RAD1
Antenna  Ex .....
Mode     LIS(2,4) .....
SUM/SEP  SUM .....
Toggle   OFF .....

TNR
Antenna  ExEy .....
Mode     A-32 .....
Sweep    ACE .....
  
```