

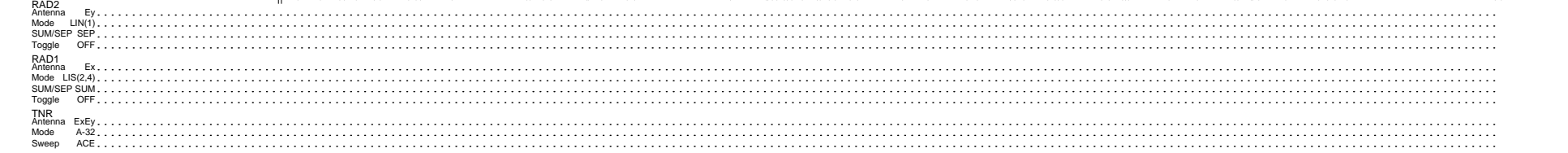
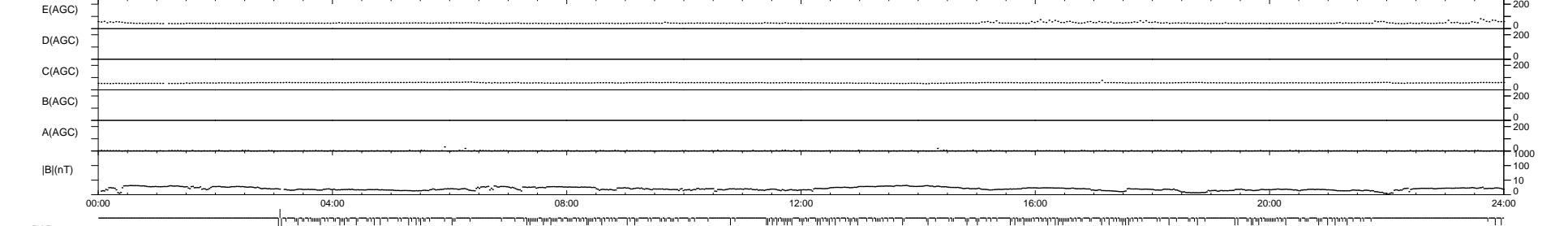
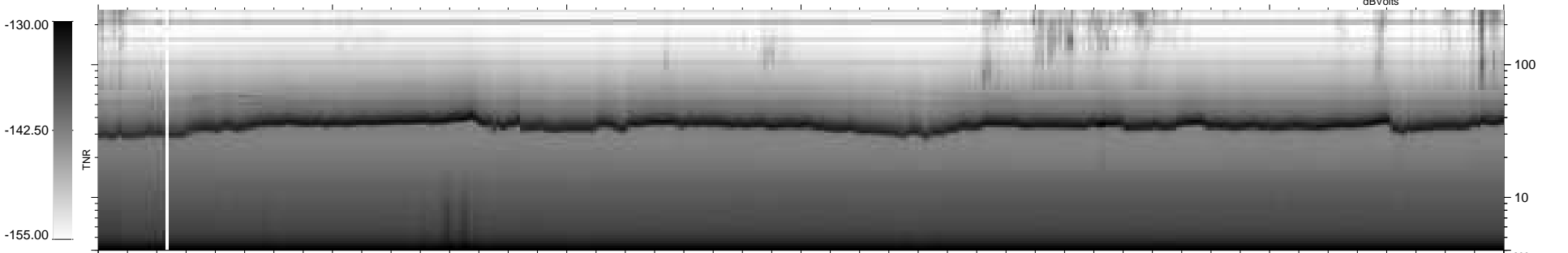
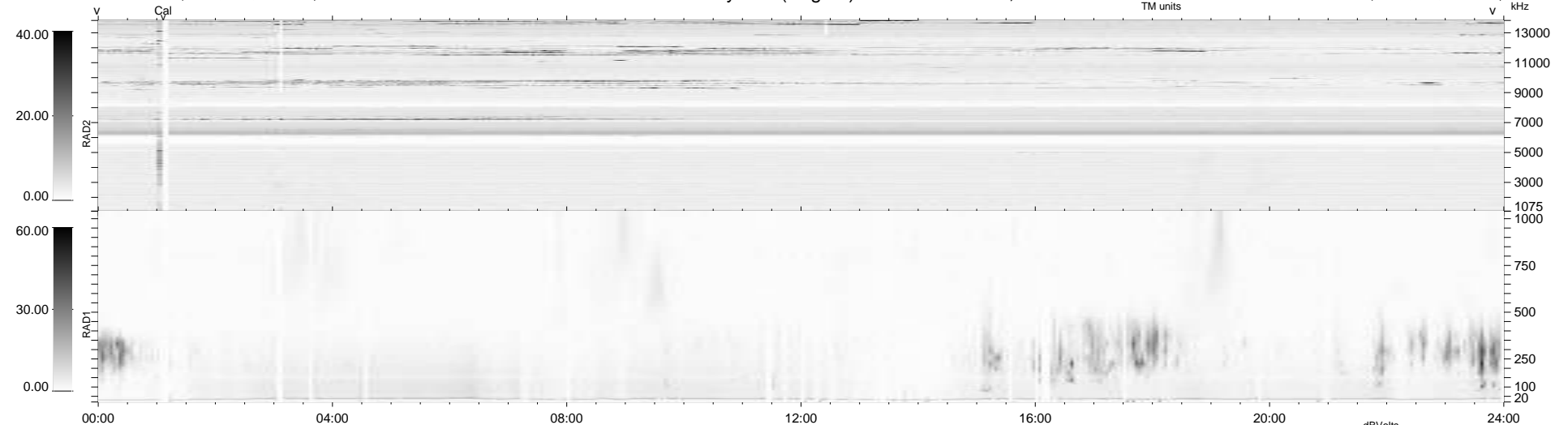
285 bad + 653 good MF/939MF projected (69%) - 1 missing MF
 Avg interval = 180 secs
 Re = 200.25 (200.22, -0.35, -3.25 GSE)

windlib 2.0b

LZ version = v01

WIND/WAVES Summary Plot (Page 1) for 13-MAY-2020, DOY = 134

DAILY 2020-05-15 11:21:19
 Re = 200.48 (200.42, 3.38, -3.48 GSE)



```

RAD2
Antenna Ey .....
Mode LIN(1) .....
SUM/SEP SEP .....
Toggle OFF .....

RAD1
Antenna Ex .....
Mode LIS(2,4) .....
SUM/SEP SUM .....
Toggle OFF .....

TNR
Antenna ExEy .....
Mode A-32 .....
Sweep ACE .....
  
```