

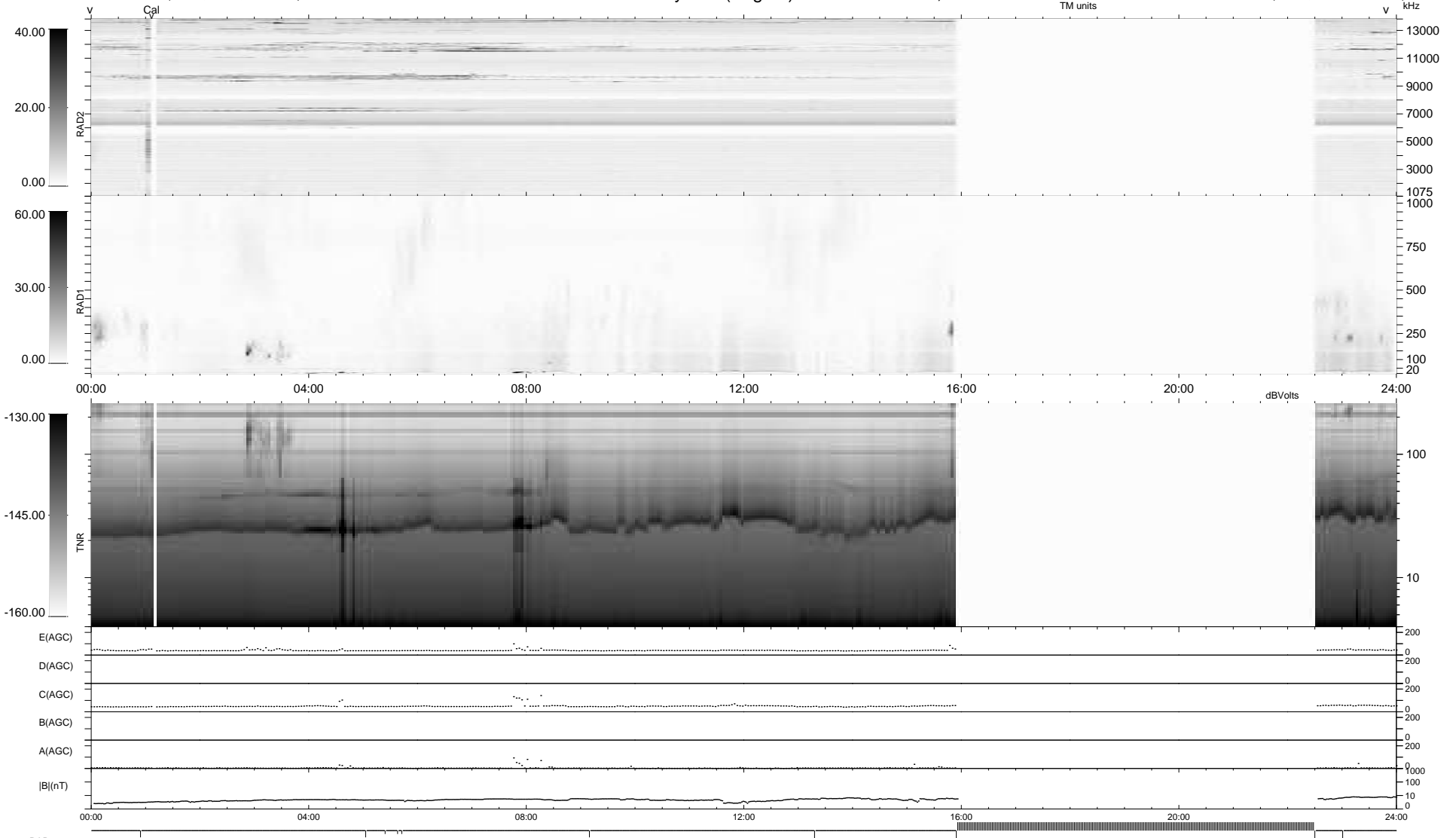
10 bad + 672 good MF/939MF projected (71%) - 257 missing MFs
 Avg interval = 180 secs
 Re = - 202.03 (199.91, -29.12, -1.19 GSE)

windlib 2.0b

LZ version = v01

WIND/WAVES Summary Plot (Page 1) for 05-MAY-2020, DOY = 126

DAILY 2020-05-06 16:20:04
 Re = 201.43 (199.79, -25.66, -1.45 GSE)



```

RAD2
Antenna Ey .....
Mode LIN(1) .....
SUM/SEP SEP .....
Toggle OFF .....

RAD1
Antenna Ex .....
Mode LIS(2,4) .....
SUM/SEP SUM .....
Toggle OFF .....

TNR
Antenna ExEy .....
Mode A-32 .....
Sweep ACE .....
  
```