

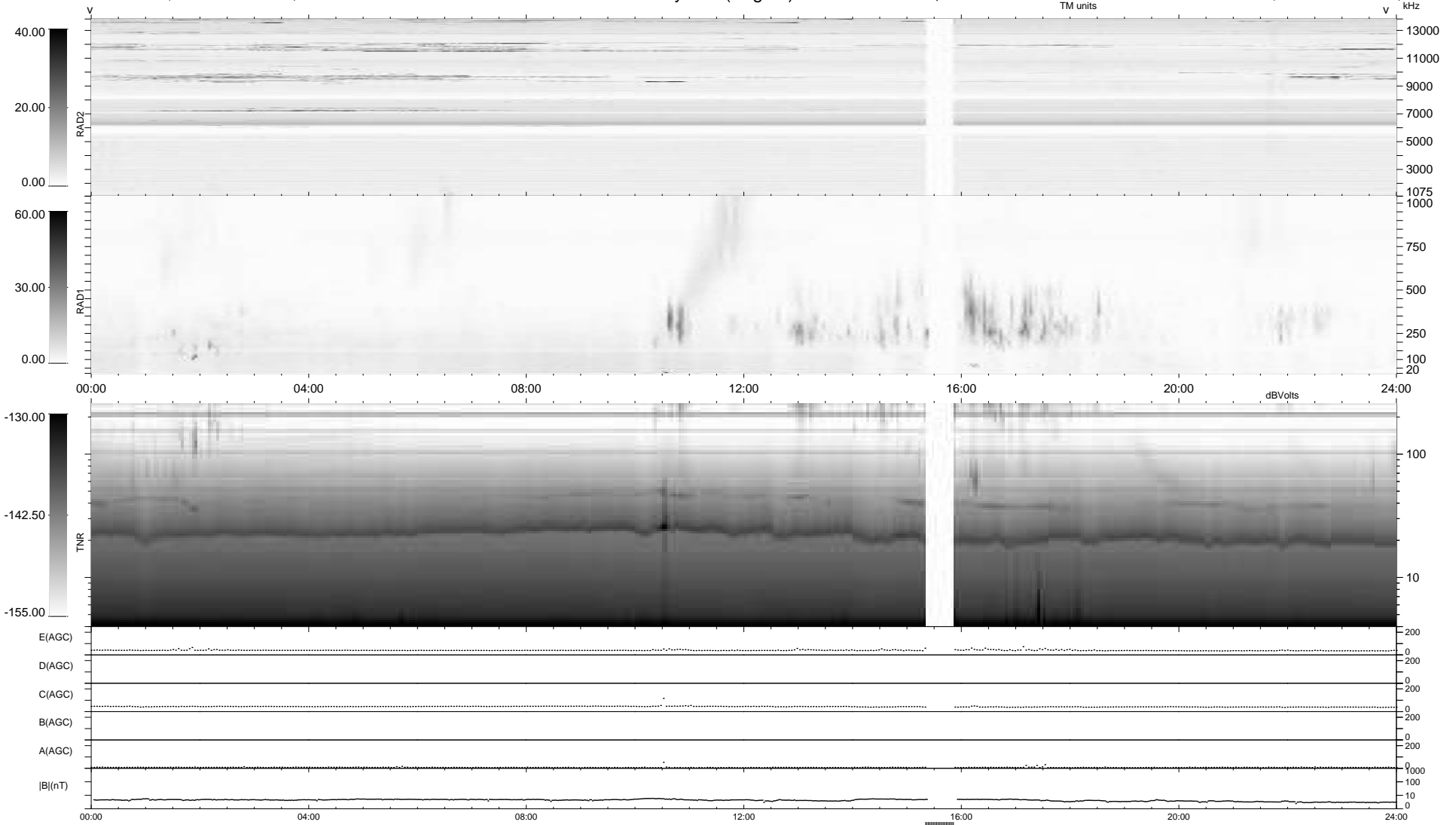
6 bad + 912 good MF/939MF projected (97%) - 21 missing MFs
 Avg interval = 180 secs
 Re = 208.59 (201.80, -52.79, 0.58 GSE)

windlib 2.0b

LZ version = v01

WIND/WAVES Summary Plot (Page 1) for 28-APR-2020, DOY = 119

DAILY 2020-04-29 17:20:05
 Re = 207.47 (201.47, -49.53, 0.33 GSE)



```

RAD2
Antenna Ey .....
Mode LIN(1) .....
SUM/SEP SEP .....
Toggle OFF .....

RAD1
Antenna Ex .....
Mode LIS(2,4) .....
SUM/SEP SUM .....
Toggle OFF .....

TNR
Antenna ExEy .....
Mode A-32 .....
Sweep ACE .....
  
```