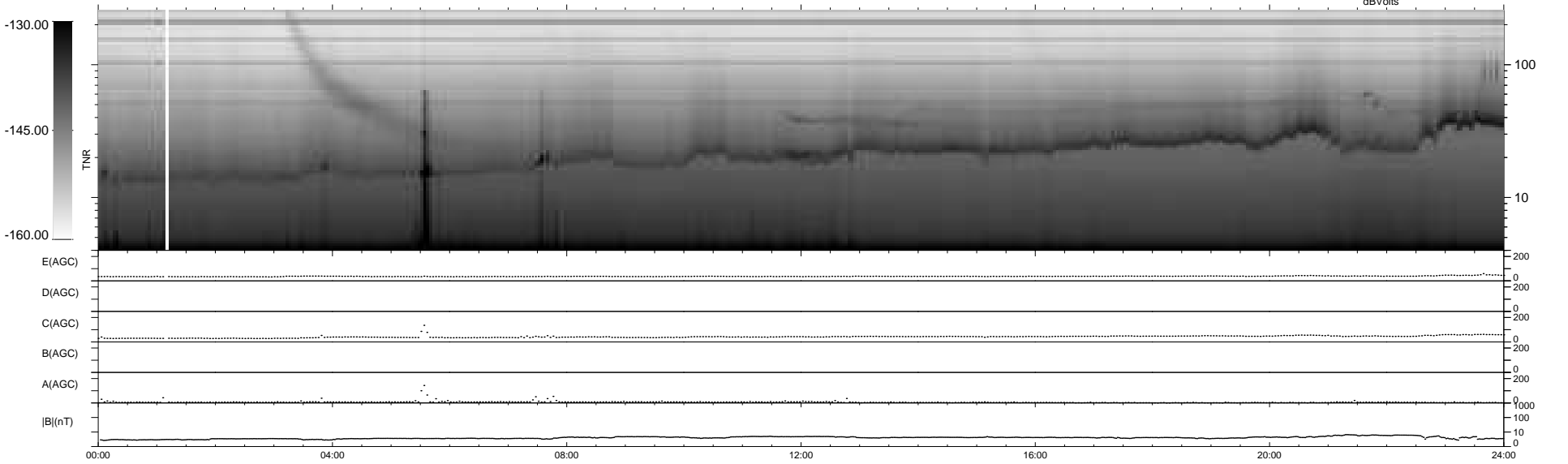
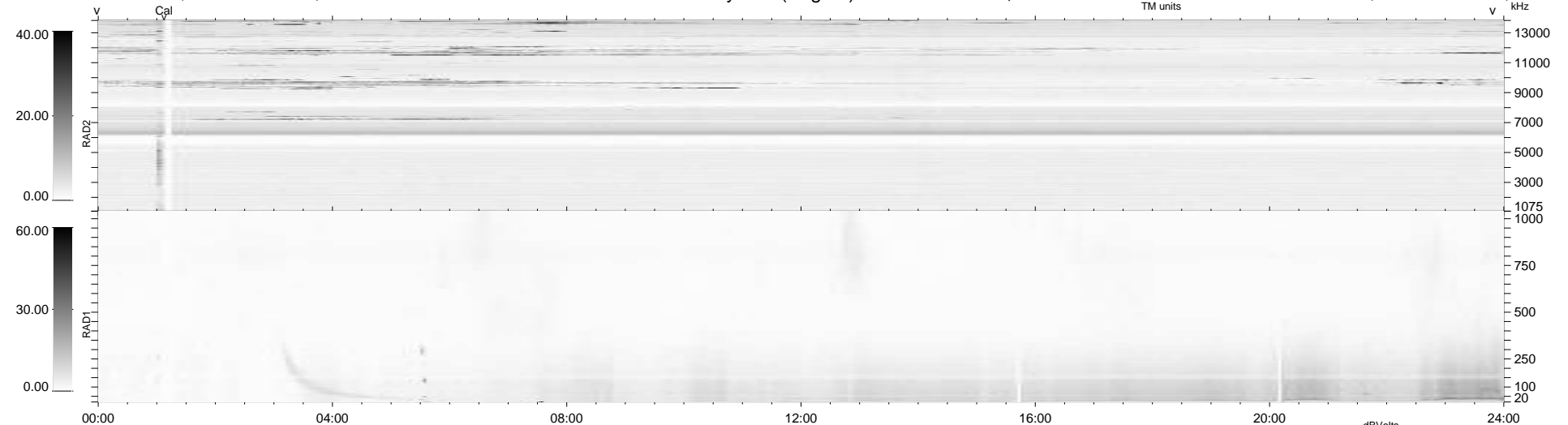


7 bad + 933 good MF/940MF projected (99%) - 0 missing MFs
 Avg interval = 180 secs
 Re = 214.67 (203.53, -68.24, 1.81 GSE)

windlib 2.0b LZ version = v01
 DAILY 2020-04-26 03:20:14
 Re = 213.43 (203.18, -65.33, 1.56 GSE)

WIND/WAVES Summary Plot (Page 1) for 23-APR-2020, DOY = 114



```

RAD2
Antenna Ey .....
Mode LIN(1) .....
SUM/SEP SEP .....
Toggle OFF .....

RAD1
Antenna Ex .....
Mode LIS(2,4) .....
SUM/SEP SUM .....
Toggle OFF .....

TNR
Antenna ExEy .....
Mode A-32 .....
Sweep ACE .....
  
```