

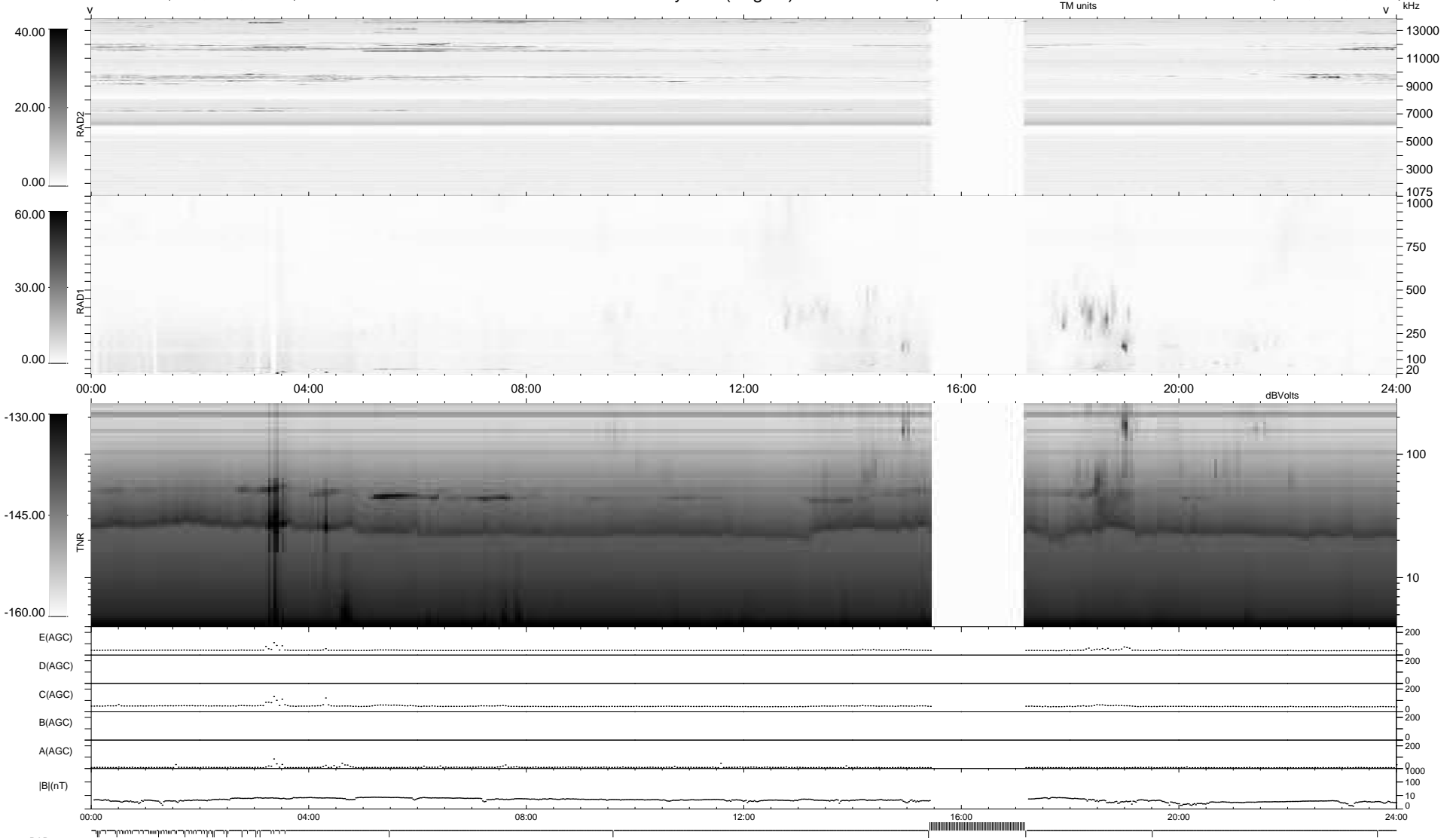
63 bad + 807 good MF/939MF projected (85%) - 69 missing MFs
 Avg interval = 180 secs
 Re = 227.92 (208.21, -92.62, 4.41 GSE)

windlib 2.0b

LZ version = v01

WIND/WAVES Summary Plot (Page 1) for 12-APR-2020, DOY = 103

DAILY 2020-04-15 02:20:04
 Re = 226.78 (207.64, -91.11, 4.19 GSE)



```

RAD2
Antenna Ey .....
Mode LIN(1) .....
SUM/SEP SEP .....
Toggle OFF .....

RAD1
Antenna Ex .....
Mode LIS(2,4) .....
SUM/SEP SUM .....
Toggle OFF .....

TNR
Antenna ExEy .....
Mode A-32 .....
Sweep ACE .....
  
```