

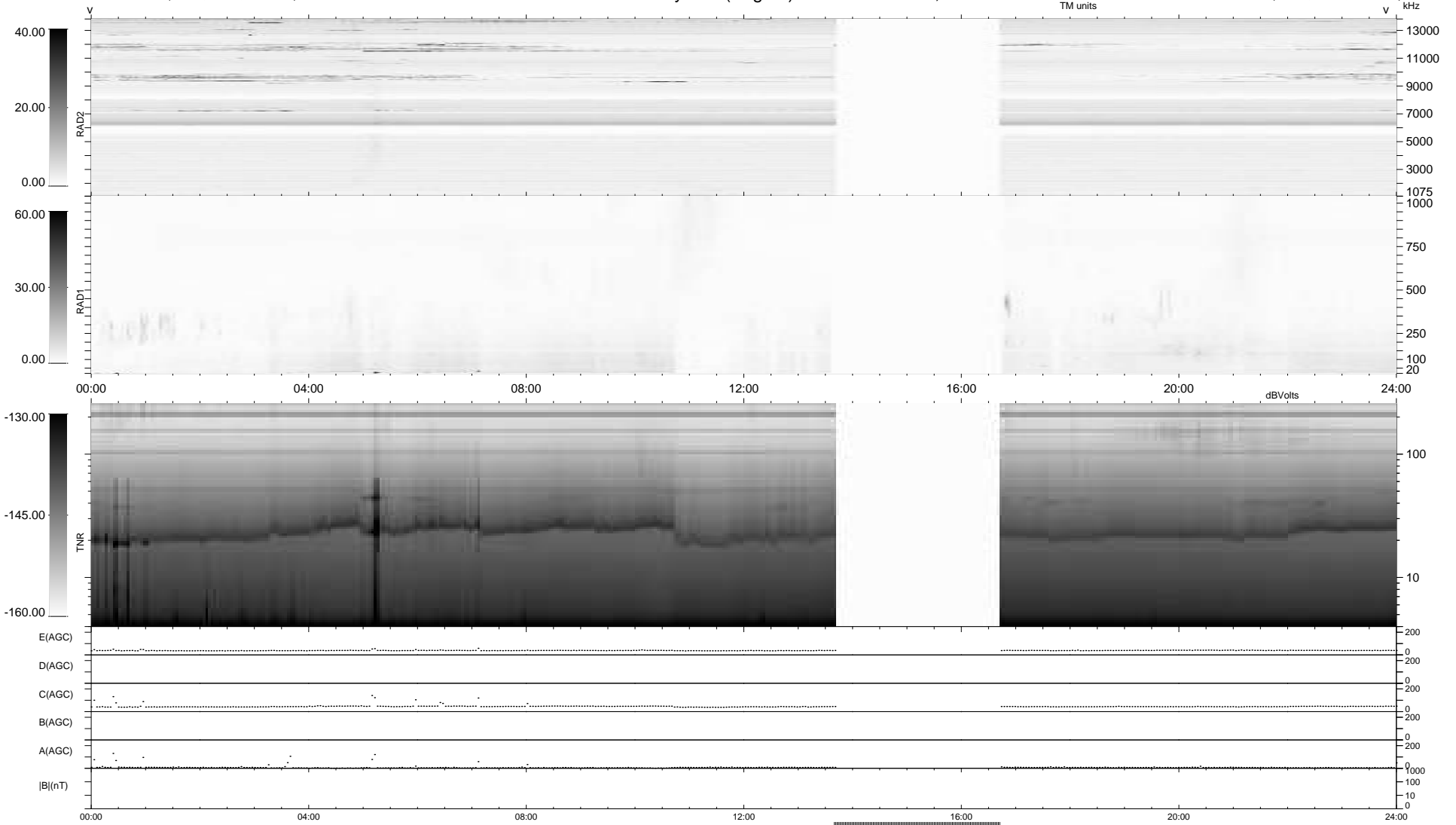
6 bad + 813 good MF/939MF projected (86%) - 120 missing MFs
 Avg interval = 180 secs
 Re = 230.21 (209.54, -95.22, 4.83 GSE)

windlib 2.0b

LZ version = v01

WIND/WAVES Summary Plot (Page 1) for 10-APR-2020, DOY = 101

DAILY 2020-04-13 10:20:06
 Re = 229.07 (208.85, -94.00, 4.63 GSE)



```

RAD2
Antenna Ey .....
Mode LIN(1) .....
SUM/SEP SEP .....
Toggle OFF .....

RAD1
Antenna Ex .....
Mode LIS(2,4) .....
SUM/SEP SUM .....
Toggle OFF .....

TNR
Antenna ExEy .....
Mode A-32 .....
Sweep ACE .....
  
```