

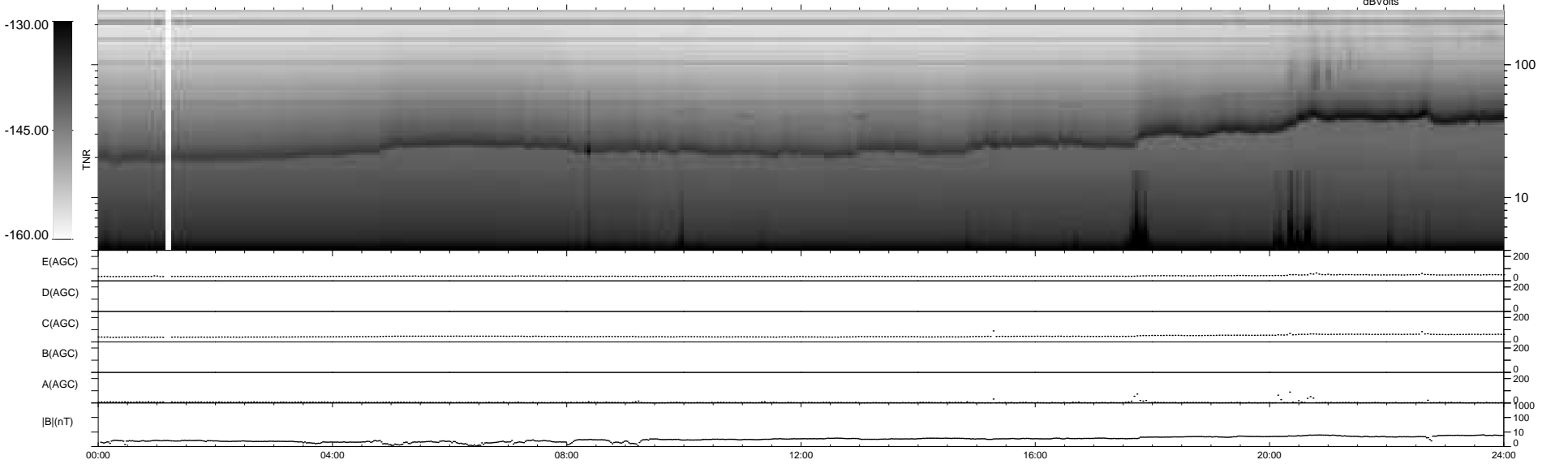
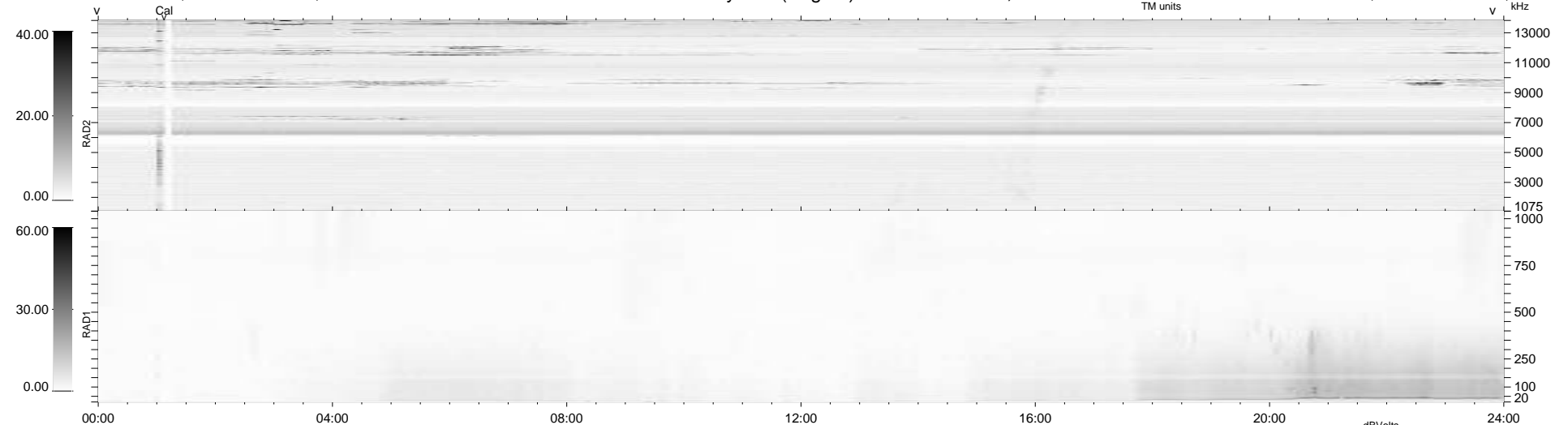
8 bad + 932 good MF/940MF projected (99%) - 0 missing MFs
 Avg interval = 180 secs
 Re = 233.70 (212.03, -98.13, 5.40 GSE)

windlib 2.0b

LZ version = v01

WIND/WAVES Summary Plot (Page 1) for 07-APR-2020, DOY = 98

DAILY 2020-04-10 00:20:06
 Re = 232.53 (211.14, -97.29, 5.22 GSE)



```

RAD2
Antenna Ey .....
Mode LIN(1) .....
SUM/SEP SEP .....
Toggle OFF .....

RAD1
Antenna Ex .....
Mode LIS(2,4) .....
SUM/SEP SUM .....
Toggle OFF .....

TNR
Antenna ExEy .....
Mode A-32 .....
Sweep ACE .....
  
```