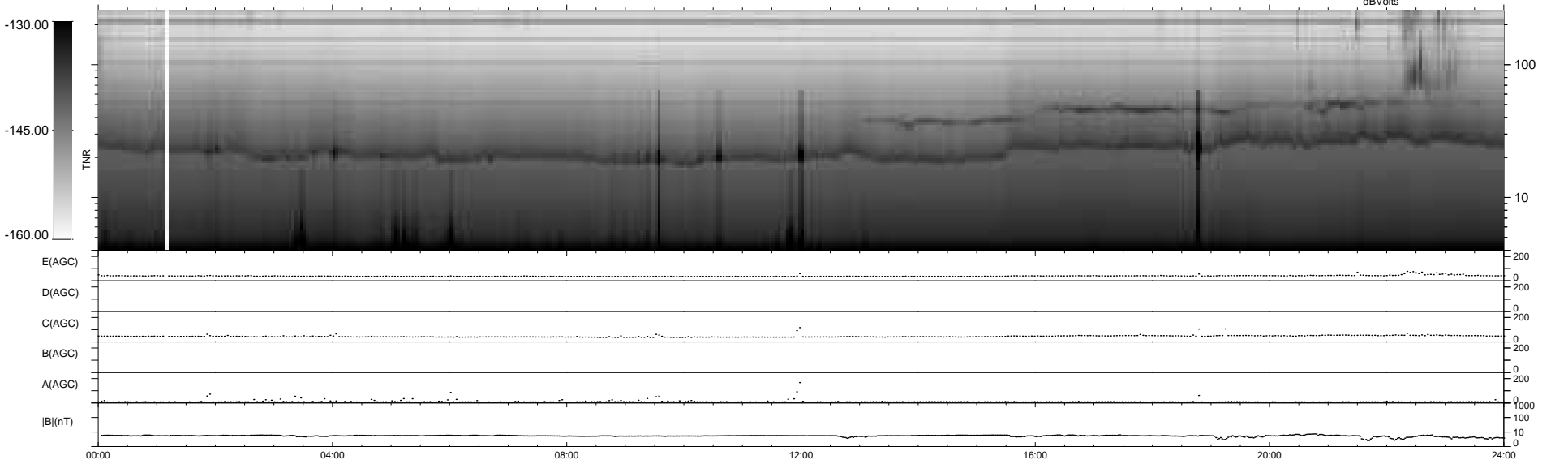
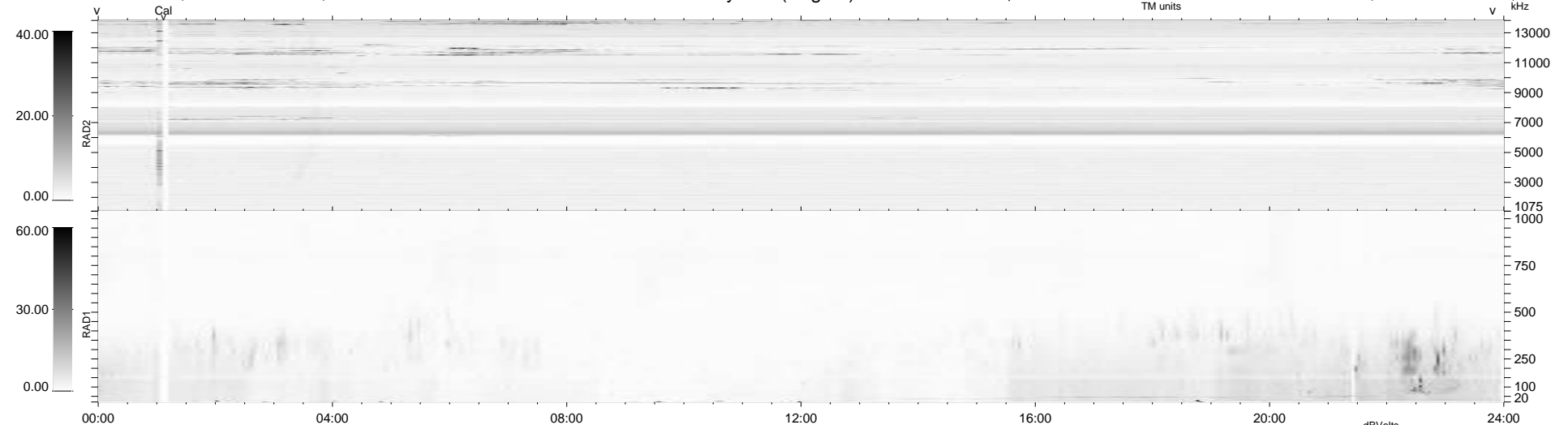


8 bad + 931 good MF/939MF projected (99%) - 0 missing MFs
 Avg interval = 180 secs
 Re = 238.53 (216.26, -100.46, 6.01 GSE)

windlib 2.0b LZ version = v01
 DAILY 2020-04-06 11:20:05
 Re = 237.32 (215.13, -100.02, 5.87 GSE)

WIND/WAVES Summary Plot (Page 1) for 03-APR-2020, DOY = 94



```

RAD2
Antenna Ey .....
Mode LIN(1) .....
SUM/SEP SEP .....
Toggle OFF .....

RAD1
Antenna Ex .....
Mode LIS(2,4) .....
SUM/SEP SUM .....
Toggle OFF .....

TNR
Antenna ExEy .....
Mode A-32 .....
Sweep ACE .....
  
```